



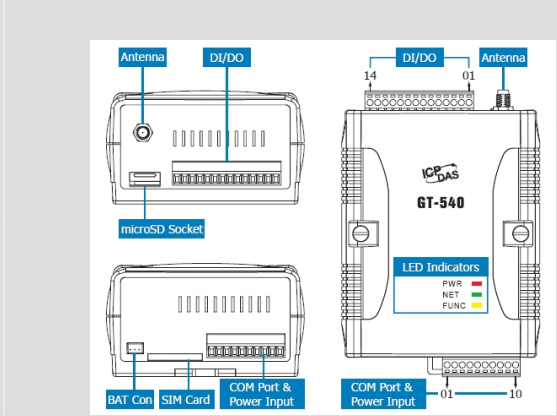
M2M Series Products



Intelligent GPRS Remote Terminal Unit with GPS



GT-540P



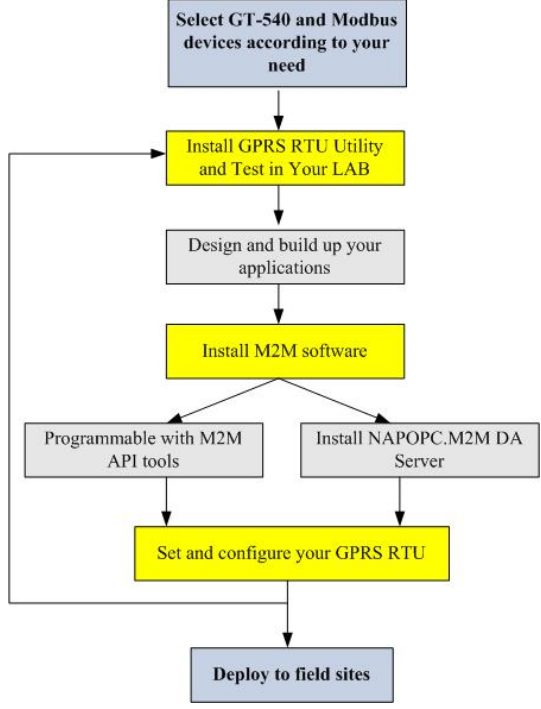
Dimensions

The GT-540P is an intelligent Active GPRS Remote Terminal Unit with GPS. It can be used in M2M application fields to transfer the local I/O, GPS and Modbus device data via GPRS by the defined period or DI/AI triggers. The local I/O and GPS data can also be stored in the SD card to become a remote data logger. In addition, the GT-540P offers the e-mail mode to transfer the data by e-mail via GPRS for users to choose. With The simple I/O linkage function, the GT-540P can also reach the real time control in local field.

Features

- Built-in 32 bit CPU
- COM port: COM1 (5-wire RS232), COM2 (RS-485),
- I/O: 6 channel DI, 2 channel DO, 1 channel AI
- Support SD storage card
- Quad-band 850/900/1800/1900 MHz
- Automatic/continuous GPRS Link Management
- Support Modbus RTU protocol to connect to Max 3 Modbus RTU devices via RS-485 port
- Support I/O data logger file transferring by E-mail
- Support M2M.OPC server and M2M.API tools
- Local I/O linkage function to make the simple local control
- Support GPS function
- Support 3.7V 600 mAH Li-battery

Application flow chart



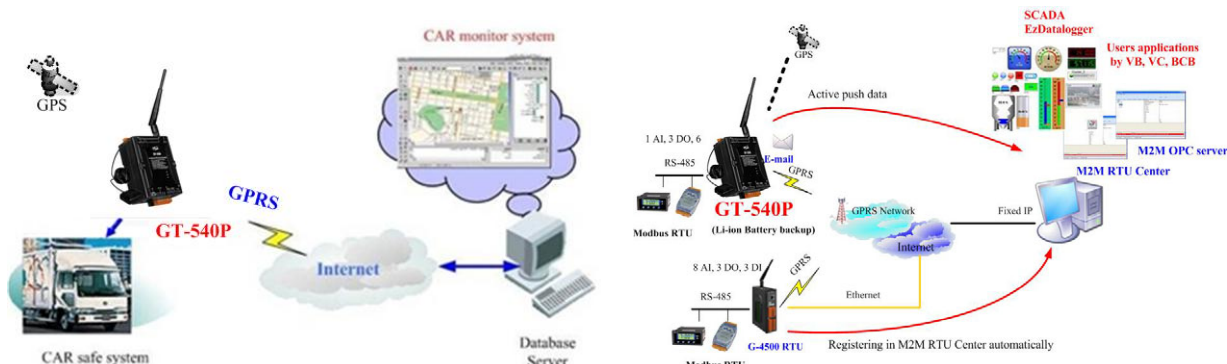
I/O Interface

I/O	Channel number	Specification
DO	2	Output type : Open-Collector (NPN) Load Voltage: +30V Max. Load Current : 100mA Max
DI	6	Input type : Sink or Source, Isolated channel with common power or ground On Voltage : +3.5V~+30V Off Voltage : +1V Max
AI	1	Resolution : 12-bit Input Range/Type : 0~20mA Sample Rate : 1KHz Max

System	
CPU	32 bit, Microprocessor inside
Comm. Interface	
COM ports	COM1: Tx,D,RxD,GND for configuration; COM2: RS-485;
GPRS Interface	
Frequency Band	Quad-Band 850/900/1800/1900 MHz; GPRS multi-slot : class 10/8
GPRS connectivity	GPRS class 10; GPRS station class B; GPRS class 10
GPS Interface	
General	16 channels with All-In-View tracking; Built-in high gain amplifier and bandpass filter; Extra high sensitivity: -159dBm
Acquisition Time	Cold/Warm Time: 42 / 35 sec. at open sky and stationary
Reacquisition Time	0.1 second
General	
Power Requirement	2W; Unregulated +10V DC ~ +30V DC. Support 3.7V 600 mA AH Li-battery
Power Consumption	Idle: 75 mA @ 24 V _{DC} ; Data Link: 180 mA @ 24 V _{DC} ; Peak: 460 mA @ 24 V _{DC}
LEDs	4 indicator LEDs
Environment	
Operation Temp.	Operation : -25°C to 75°C; Storage Temp : -40°C to 80°C
Humidity	5~95% non-condensing
Dimensions	91mm x 132mm x 52mm (long*width* high)

LED	Description		
EXT(red)	on	The external Power is active	
	off	The external Power is not active	
STA (orange)		Normal	GSM Fail
	EXT (on)	Blanking (1 sec)	Always on or off
GSM(green)	Blinking	Modem normal	
	off	Modem fail (or Blinking(not 3 sec))	
GPS(green)	Blinking	GPS data is valid	
	on	GPS data is invalid	

Applications



Ordering Informaion

GT-540P CR	Intelligent GPRS Remote Terminal Unit with GPS (RoHS)
-------------------	---