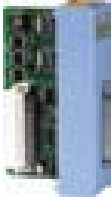
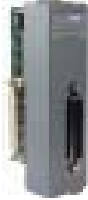


### 8K Motion Modules

I-8090



I-8090-G



#### I-8090 / I-8090-G (Gray color)

##### 3-axis Encoder Input Module

- Channels: 3
- Encoder type: single-ended or differential
- Logical level: TTL and COMS compatible
- Accept inputs from incremental or quadrature encoders
- Maximum quadrature input frequency: 1MHz
- Encoder input modes: Quadrature, Up/Down, Pulse/Direction
- Power Consumption: 3.4W

I-8091



I-8091-G

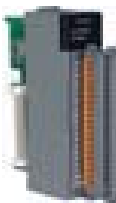


#### I-8091 / I-8091-G (Gray color)

##### 2-axis Stepper/Servo Module

- Stepper channels: 2
- Step rate: 1pps~250Kpps
- Max. step count: +/-2
- Acceleration/Deceleration: Automatic trapezoidal acceleration/deceleration
- Output pulse signal: Two pulse (CW/CCW) mode or one pulse (Pulse, Direction) mode
- Output polarity: Positive/Negative programmable
- Power Consumption: 3.9W

I-8093-G



NEW!!

#### I-8093-G (Gray color)

##### 3-axis Encoder Input Module

- Channels: 3-axis
- Encoder type: single-ended or differential
- Logical level: TTL and COMS compatible
- Accept inputs from incremental or quadrature encoders
- Maximum quadrature input frequency: 5MHz
- Encoder input modes: Quadrature, Up/Down, Pulse/Direction