

NAPOPC



NAPOPC

OLE For Process Control & Data Access Server

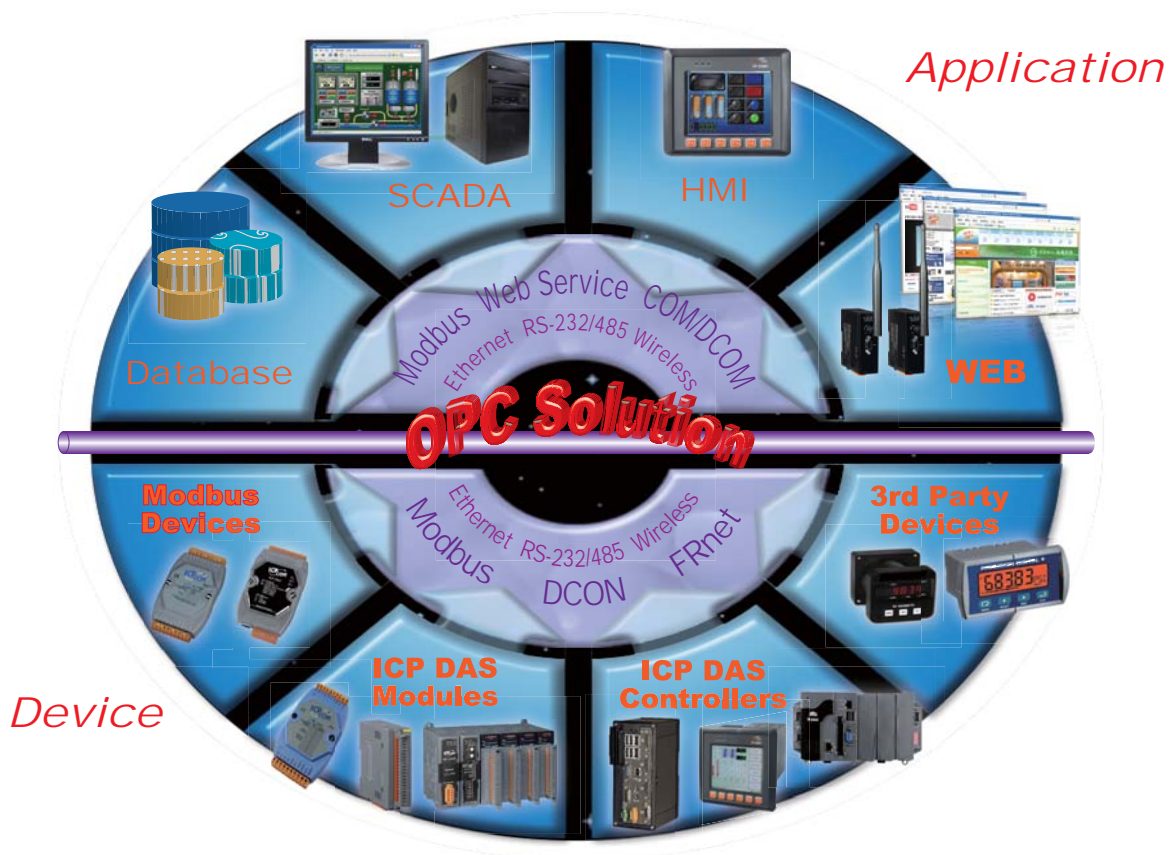




NAPOPC Introduction

NAPOPC DA Server is a **free** OPC DA Server ("**OPC**" stands for "OLE for Process Control" and "**DA**" stands for "Data Access") for ICP DAS products. Based on Microsoft's OLE COM (component object model) and DCOM (distributed component object model) technologies, NAPOPC DA Server defines a standard set of objects, interfaces and methods for use in process control and manufacturing automation applications to facilitate the interoperability.

Using NAPOPC DA Server, system integrates data with SCADA/HMI/Database software on the same computer and others. SCADA/HMI/Database sends a request and NAPOPC DA Server fulfills the request by gathering the data of ICP DAS modules (**License Free**) and third-party devices (**License Charge**) to SCADA/HMI/Database.

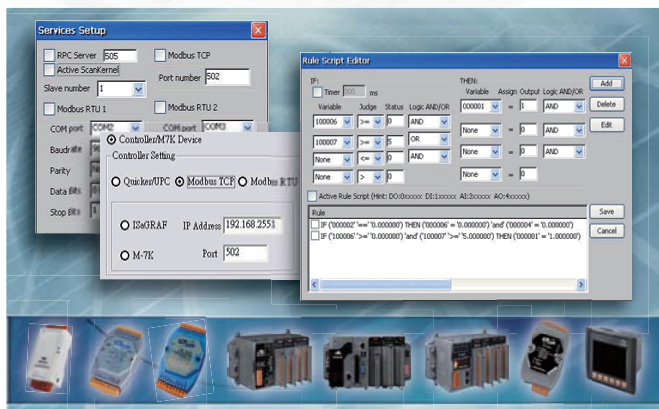
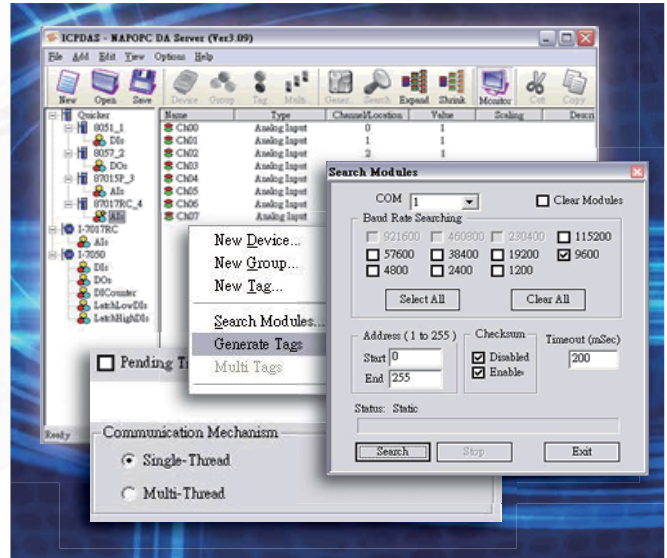


NAPOPC_ST DA Server	NAPOPC_XPE DA Server	NAPOPC_CE5 DA Server	NAPOPC_CE6 DA Server
For Windows 95/98/2000/NT/XP Windows 7 OS	For Windows XP Embedded OS	For Windows CE 5.0 OS	For Windows CE 6.0 OS



Features

- **Multi-Thread Communication**
 - Increase data integration speed
 - Provide flexible planning
 - Set equipment individual idle time
 - Regulate equipment polling frequency
- **Auto Search**
 - On-line Auto Search modules
 - Support DCON I/O modules
 - Support I-7K, I-8K, I-87K, RU/USB-87Pn
- **Auto Generate**
 - Off-line Auto Generate tags
 - Support DCON I/O modules
 - Generate a whole set configuration
 - Auto structure Device/Group/Tag attributes

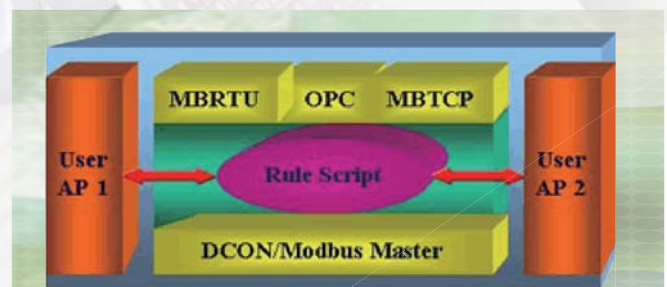


- **Support Modbus Device**
 - Modbus I/O modules : M-7000, ET-6000, ET-7000
 - Modbus PAC Controllers : XPAC, XPAC-CE6, WinPAC, WinCon, ViewPAC, iPAC, μPAC
- **Provide Modbus Service**
 - OPC to Modbus TCP Service
 - OPC to Modbus RTU/ASCII Service
- **Support Rule Script**
 - Provide Rule Script Editor
 - Edit simple condition logic equations on PAC
 - Process simple condition logic equations on PAC directly

○ Unique Designs

- **Active data transmission mechanism**

Server side provides a kind of active transmission mechanism, let data actively transmitted from equipments to SCADA in a superior transmission rate. If any emergency occurred in the equipments, the data will be delivered to the SCADA rapidly.

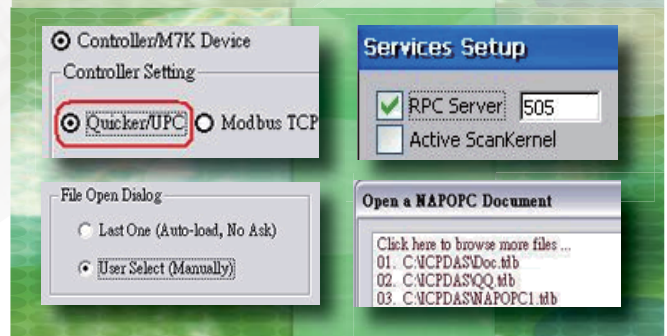


- **Runtime document selection (OPC Client)**

When the OPC Client launches the NAPOPC_ST/XPE DA Server in runtime, OPC Client can select which document to be loaded, not only by Server like other OPC Server.

- **Open application programming interface**

Open own internal data structure, through "Share Memory", for outer programs to access the data via the API. Users can put most efforts on designing professional Know-How, not on the I/O and transmission communications.





Product Comparison

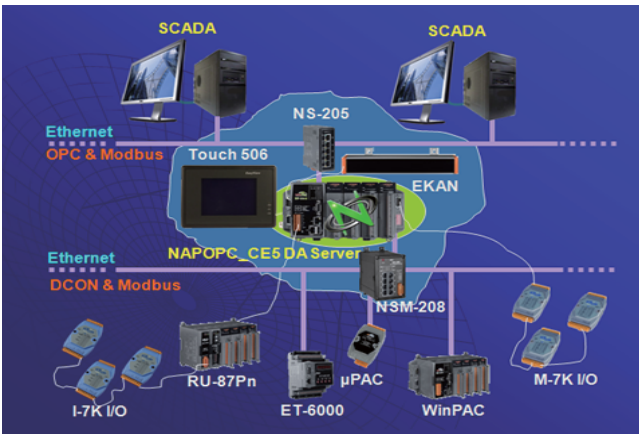
Software Name	NAPOPC_ST	NAPOPC_XPE	NAPOPC_CE5	NAPOPC_CE6
Price & Logo	Free/\$	Free	Free	Free
Environment				
Hardware Platform	Enterprise Server (PC)	XP-8000	WinPAC-8000 ViewPAC-2000	XP-8000-CE6
Operation System	Windows 95/98 Windows 2000/NT Windows XP Windows 7	Windows XPE	Windows CE.NET 5.0	Windows CE.NET 6.0
ICP DAS I/O Modules & PAC				
Local I/O Module	-	I-8K, I-87K	I-8K, I-87K	I-8K, I-87K
Remote I/O Module	I-7K, M-7K tM Series I-8K, I-87K ZB-2K, FR-2K ET-6000/7000 RU/USB-87Pn I-8KE4/8 I-8KE4/8-MTCP	I-7K, M-7K tM Series I-8K, I-87K ZB-2K, FR-2K ET-6000/7000 RU/USB-87Pn I-8KE4/8 I-8KE4/8-MTCP	I-7K, M-7K tM Series I-8K, I-87K ZB-2K, FR-2K ET-6000/7000 RU/USB-87Pn I-8KE4/8-MTCP	I-7K, M-7K tM Series I-8K, I-87K ZB-2K, FR-2K ET-6000/7000 RU/USB-87Pn I-8KE4/8-MTCP
PAC	WinPAC / WinCon ViewPAC XPAC / XPAC-CE6 µPAC iPAC	WinPAC / WinCon ViewPAC XPAC / XPAC-CE6 µPAC iPAC	WinPAC / WinCon ViewPAC XPAC / XPAC-CE6 µPAC iPAC	WinPAC / WinCon ViewPAC XPAC / XPAC-CE6 µPAC iPAC
Third Party Modbus I/O & Modbus Device				
Modbus I/O & Device	License Charge	License Free	License Free	License Free
Functionality				
Slave Protocol	OPC	OPC Modbus TCP Modbus RTU Modbus ASCII	OPC Modbus TCP Modbus RTU Modbus ASCII	OPC Modbus TCP Modbus RTU Modbus ASCII
Master Protocol	DCON FRnet Modbus TCP Modbus RTU	DCON FRnet Modbus TCP Modbus RTU Modbus ASCII	DCON FRnet Modbus TCP Modbus RTU Modbus ASCII	DCON FRnet Modbus TCP Modbus RTU Modbus ASCII
Active S2C Communication	Client side	Client side	Server side	Server side
Other Functions	Multi-Thread Communication Runtime OPC Document Selection		Multi-Thread Communication Cross-Process I/O Access Conditional Script	



Applications

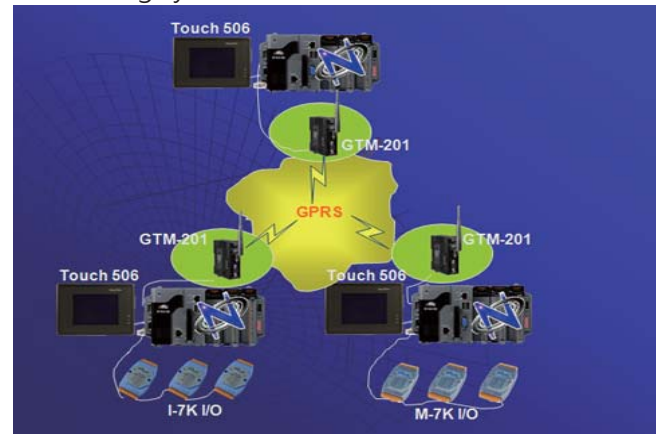
Protocol Conversion Application

NAPOPC DA Server centric Client-Server monitor/control system. By the NAPOPC DA Server, the data of equipments are collected together and provides for use of several clients. It reduces the loading that equipments service for the different clients, and also improves the stability and reliability of the system.



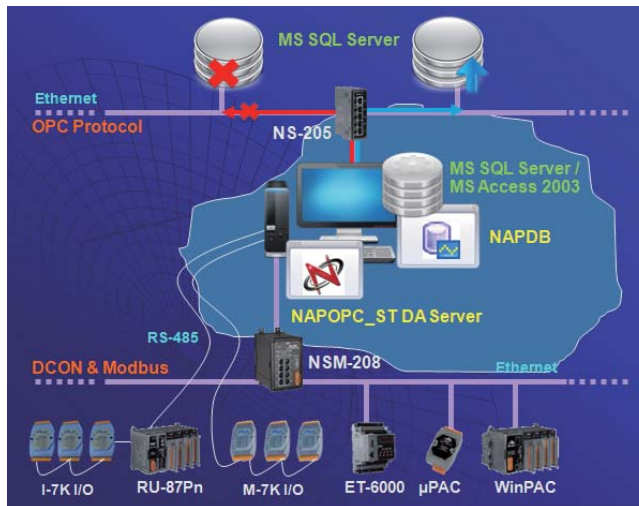
Wireless I/O Application

NAPOPC DA Server collects the equipments data by the way of wireless communication and provides them for use of client end. It is time to apply this application, when I/O equipments are located in an area that no Ethernet connection but still near the ISP stations so that it can communicate through the wireless network, such as the environmental monitoring system in the remote mountain.



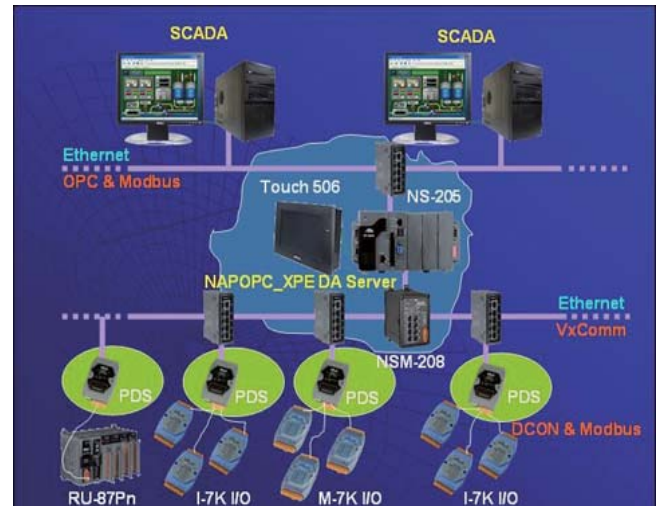
Database Application - NAPDB

NAPDB, the database system developed by ICP DAS, can be used with the NAPOPC_ST/NAPOPC_XPE DA Server. These Server is ideal integrate with the hardware devices based on various transmission formats, like Modbus TCP, Modbus RTU, DCON, etc. The device information will be converted to OPC format and then stored in the database by NAPDB. Without any complex programming, the user can easily access the information in the database by NAPDB.



VxComm Application

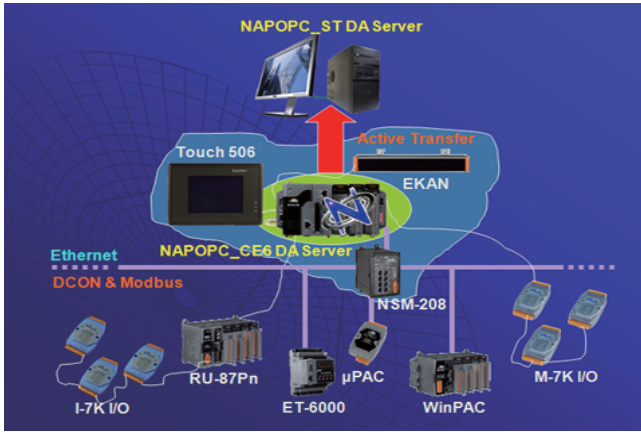
This application combines the DS/PDS-700 Device Server and the VxComm technology to allow maximum 255 virtual COM ports for the communications when the NAPOPC_ST/NAPOPC_XPE DA Server applies the DCON & Modbus communication. Wherein the communication between the Server and the DS/PDS-700 is through the Ethernet network; the communication within DS/PDS-700, I/O modules and controllers is through the RS-232/RS-485 network.





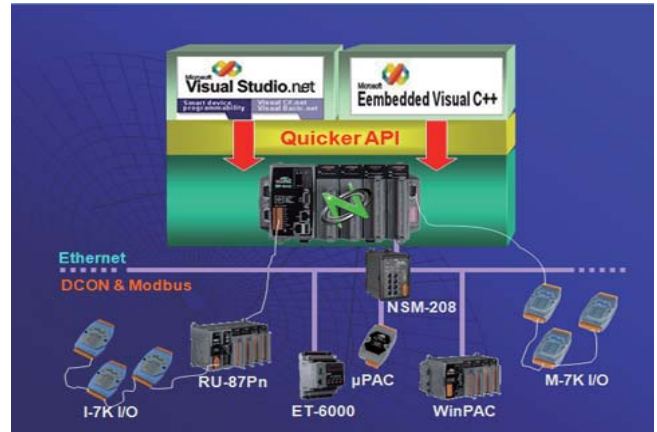
Active Server to Client Communication Application

NAPOPC_CE5/NAPOPC_CE6 DA Server provides one kind of active transmission mechanism. These two Servers, via the NAPOPC DA Server, allow the data actively transmitted from equipments to SCADA with superior transmission rate. If any emergency occurred in the equipments, the data will be delivered to SCADA rapidly.



Direct Cross-Process I/O Access Application

NAPOPC_CE5/NAPOPC_CE6 DA Servers provide a function for advanced system design to integrate user defined algorithms or graphic control interface. The Server opens its internal data structure, through "Share Memory", for outer programs to access data via API. Therefore users can put most efforts on their professional Know-How, not on the I/O and transmission communications.



Ordering Information

RUN-TIME LICENSE

NAPOPC-MB-E	Support Third Party Modbus Devices (Modbus TCP Master), one HardKey included.
NAPOPC-MB-S	Support Third Party Modbus Devices (Modbus ASCII/RTU Master), one HardKey included.
NAPOPC-MB-ALL	Support Third Party Modbus Devices (Modbus TCP/RTU/ASCII Master), one HardKey included.

HardKey



NAPOPC HardKey is an encapsulated chip that must be physically connected to the USB Port of the local computer on which NAPOPC_ST DA Server is installed.

Contact Information website : <http://opc.icpdas.com> or www.icpdas.com e-mail : service@icpdas.com

Headquarters (Hsinchu, Taiwan)

No. 111, Guangfu N. Rd., Hukou Township, Hsinchu County 30351, Taiwan, R.O.C.
TEL : 886-3-597-3366 FAX : 886-3-597-3733

Xindian Office (New Taipei, Taiwan)

7 F.-2, No. 137, Lane 235, Baoqiao Rd., Xindian Dist., New Taipei City 23145, Taiwan, R.O.C.
TEL : 886-2-8919-2220 FAX : 886-2-8919-2221

Kaohsiung Office (Kaohsiung, Taiwan)

3 F., No. 505, Jhongshan 2nd Rd., Qianjin Dist., Kaohsiung City 80146, Taiwan, R.O.C
TEL : 886-7-215-7688 FAX : 886-7-216-2602

Shanghai (China)

Suite B, Floor 6, Xin'an Building, 200 Zhenning Rd., Shanghai, China
TEL : 86-21-6247-1722 FAX : 86-21-6247-1725

USA

ICP DAS USA, Inc. (<http://www.icpdas-usa.com>)
TEL : 1-310-517-9888
FAX : 1-310-517-0998

Europe

ICP DAS-EUROPE GmbH (<http://www.icpdas-europe.com/>)
TEL : +49 (0) 7121-14324-0
FAX : +49 (0) 7121-14324-90