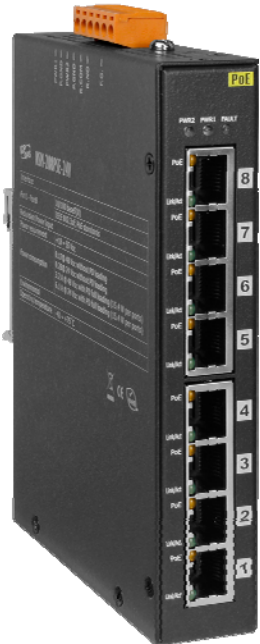


# NSM-208PSE-24V

## 8 Port 10/100M Unmanaged Ethernet Switch with 8 IEEE 802.3af PoE ports



The NSM-208PSE-24V is 8-port unmanaged 10/100M Ethernet switch supporting Power-over-Ethernet on ports 1 to 8. The switch is classified as power source equipment (PSE), and when used in this way, the NSM-208PSE-24V switch enable centralization of the power supply, providing up to 15.4 watts. The NSM-208PSE-24V can be used to power IEEE 802.3af standard devices (PD).

Voltage boost technology supports 24V industrial power sources ensuring that a full and proper PSE voltage is available across all PoE ports

### Features:

- 8 PoE PSE capable ports, Compliant to IEEE 802.3af
- 24/48 VDC flexible redundant power inputs
- Supports Auto Negotiation and Auto MDI/MDI-X
- Supports Dual +18 ~ 55 VDC power input and 1 relay output
- Supports operating temperatures from -40 ~ +75°C
- DIN-Rail, Wall Mounting (optional)

### Specifications:

Technology	
Standards	IEEE 802.3 for 10Base-T IEEE 802.3u for 100Base-TX IEEE 802.3x for Flow Control IEEE 802.3af Power Over Ethernet
Processing Type	Store & forward, wire speed switching
MAC Addresses	1024
Memory Bandwidth	3.2 Gbps
Frame buffer memory	512 Kbit
Flow Control	IEEE802.3x flow control, back pressure flow control
Interface	
RJ-45 Ports	10/100BaseT(X) auto negotiation speed, full/half duplex mode, and auto MDI/MDI-X connection
LED Indicators	PWR1, PWR2, Power fail, Link/Act, Power Device is detected
Ethernet Isolation	1500 Vrms 1 minute

<b>Power Input</b>	
Redundant Input Range	Flexible input +24/+48 VDC Nominal. ( +18 ~ +55 VDC)
Power Consumption	0.17@ 48 VDC without PD loading; 3.2 A @ 48 VDC with PD full loading (15.4 W per ports) 0.28@ 24 VDC without PD loading; 6.1 A @ 24 VDC with PD full loading (15.4 W per ports)
Alarm Contact	One relay output with current carrying capacity of 1A @ 30 VDC
Protection	Power reverse polarity protection
Connector	6-Pin Removable Terminal Block (Power & Relay)
<b>Mechanical</b>	
Chassis	Metal with an IP30 ingress protection rating
Dimensions (W x L x H)	28 mm x 120 mm x 160 mm
Installation	DIN-Rail or Wall Mounting (with optional kit)
<b>Environmental</b>	
Operating Temperature	-40 °C ~ + 75 °C ( -40° F to 167° F )
Storage Temperature	-40 °C ~ + 85 °C (-40 F to 185° F)
Ambient Relative Humidity	10 ~ 90% RH, non-condensing

## Getting to know your NSM-208PSE-24V Switch

Package Contents:

- NSM-208PSE-24V
- DIN-Rail mounting (pre-installed on the unit)
- This manual

**Note – optional wall mounting kits may be ordered**

### LED Indicator Functions:

LED	Color	Description
Ethernet Port (P1 ~ P8)	Green On	Link/Act to 10 Mbps or 100 Mbps
	Orange On	Power Device is detected
PWR1	Yellow On	This green LED is turned on when power is applied to the PWR1 input
PWR2	Green On	This yellow LED is turned on when power is applied to the PWR2 input
Power fail	Red On	Power is not being supplied to power input PWR1 and PWR2
	Red Off	Power is being supplied to power input PWR1 and PWR2

### Redundant Power Input:

Both power inputs can be connected simultaneously to live DC power sources. If one power source fails, the other live source will act as a backup, and automatically supplies all of NSM-208PSE-24V power needs.

External power supply is connected using the removable terminal block:

PWR (Power) : Power input (+18 ~ +55 VDC) and should be connected to the power supply (+)

P.GND: Ground and should be connected to the power supply (-)

**PoE Ethernet Port Connection:**

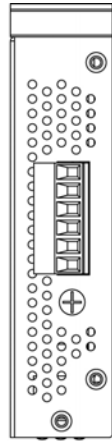
PoE ports located on the NSM-208PSE-24V's front panel are used to connect to PoE-enabled devices. The pinout follows the Alternative A, MDI mode" of 802.3af standards. Please see the details in the following table.

Pin	Signal (MDI Port Pinouts)	PoE (Mode A)
1	TxD+	V+
2	TxD-	V+
3	RxD+	V-
4	--	--
5	--	--
6	RxD-	V-
7	--	--
8	--	--

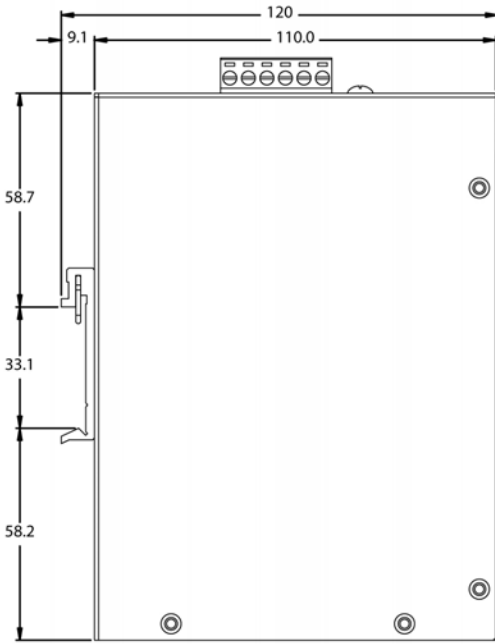
**Accessories:**

DR-120-48	48 V/2.5 A, 120 W Single Output Industrial DIN Rail Power Supply
MDR-60-48	48 V/1.25 A, 60 W Single Output Industrial DIN Rail Power Supply
DR-120-24	24 V/5 A, 120 W Single Output Industrial DIN Rail Power Supply
SDR-240-24	24 V/10 A, 240 W Single Output Industrial DIN Rail Power Supply with PFC Function

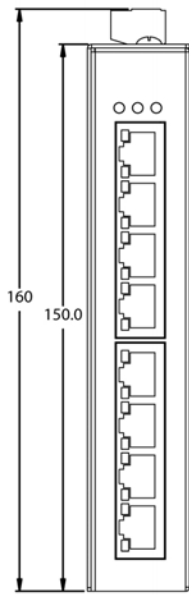
**Dimensions (unit = mm):**



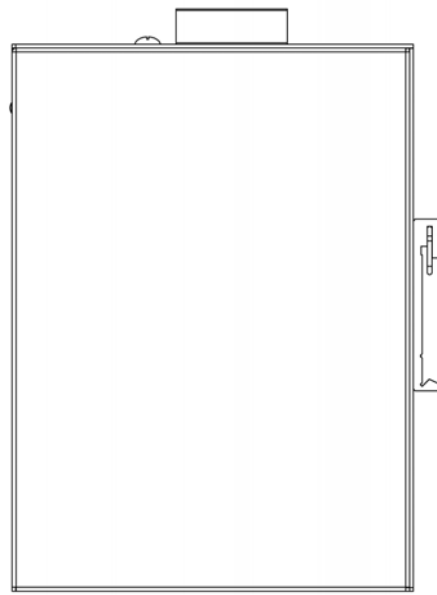
Top View



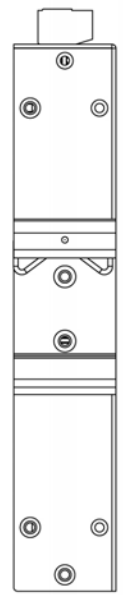
Left Side View



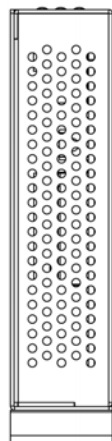
Front View



Right Side View



Rear View



Bottom View

Unit: mm