

DL-100TM485 Quick Start

Warranty

All products manufactured by ICP DAS are under warranty regarding defective materials for a period of one year from the date of delivery to the original purchaser.

Warning

ICP DAS assumes no liability for any damage resulting from the use of this product. ICP DAS reserves the right to change this manual at any time without notification. The information furnished by ICP DAS is believed to be accurate and reliable. However, no responsibility is assumed by ICP DAS for its use, nor for any infringements of patents or other rights of third parties resulting from its use.

Copyright

Copyright© 1999 - 2012 ICP DAS. All rights reserved.

Trademarks

Names are used for identification purposes only and may be registered trademarks of their respective companies.

Date: 2012/05/21

Table of Contents

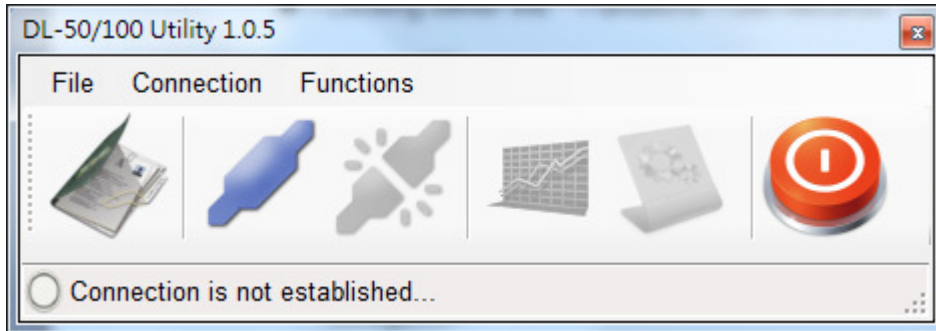
Before you use the Utility Software.....	3
An overview of the Utility	4
Connecting to the DL-100TM485 Module.....	5
Retrieving Records.....	6
Configuration	7







Before you use the Utility Software

1. Before you use this Utility, please make sure you have installed the Microsoft .NET Framework 4. If you haven't installed .NET Framework yet, please refer to item 2 for more information, or refer to item 3 for more information about the installation of this Utility.
2. To download .NET Framework, refer to:
<http://www.microsoft.com/downloads/en/details.aspx?FamilyID=9cfb2d51-5ff4-4491-b0e5-b386f32c0992&displaylang=en>
3. The Utility software is located on the attached CD at
Napdos\Data_Logger\DL50M\Utility.

An overview of the Utility

After launching the Utility, the program interface will be displayed, as shown below:




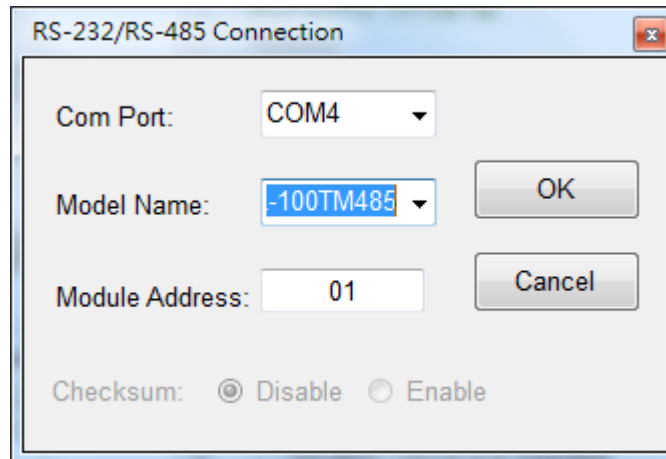
- Clicking either the “File” menu option or the  icon will open a previous DL-100TM485 log data file stored on your PC.
- Clicking either the “Connection->Connect->RS-232/RS-485” menu option or the  icon will create a connection from the serial port.
- Clicking either the “Connection->Disconnect” menu option or the  icon will disconnect the connection between the PC and the DL-100TM485.
- Clicking either the * “Functions->Get Records” menu option or the  icon will retrieve the log data which is stored on the DL-100TM485.
- Clicking either the * “Functions->Configuration” menu option or the  icon will allow the DL-100TM485 to be configured.
- Clicking either the “File->Exit” menu option or the  icon will close the Utility software.

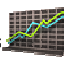

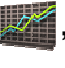

*This function is only valid when a connection between the PC

and the DL-100TM485 has been successfully established.

Connecting to the DL-100TM485 Module

1. Clicking either the “Connection->Connect->RS-232/RS-485” menu option or the “” button will open the connection selection menu, as shown below:



2. Select your COM port number and set the Model Name selection to the DL-100TM485. If you are connecting to a new module, the default address will be 01 and the checksum will be disabled. Click the “OK” button to connect to the DL-100T485.
Note: The LCD will also indicate the module address.
3. If a connection is successfully established, the Utility will return to the previous window and the message “Connection is established” will be displayed in the status bar. The “” and “” icons will also become available.
4. If you want retrieve records that are stored on the DL-100TM485, click either the “” icon or the “Functions->Get Records” menu option .
5. If you want to configure the DL-100TM485, either click the “” icon or “Functions->Configuration” menu option.

Retrieving Records

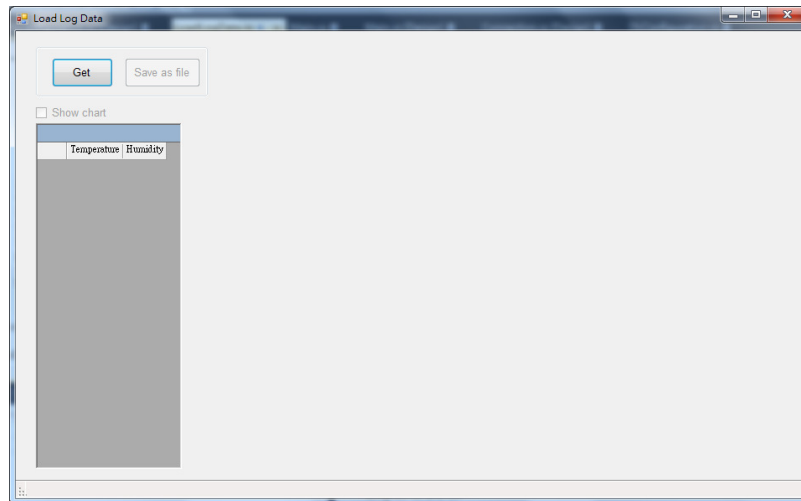
After a connection has been established between the PC and the DL-100TM485, you can retrieve log data via the Utility software. The procedure is as follows:

1. Either click the ***“Functions->Get Records”** menu option or the

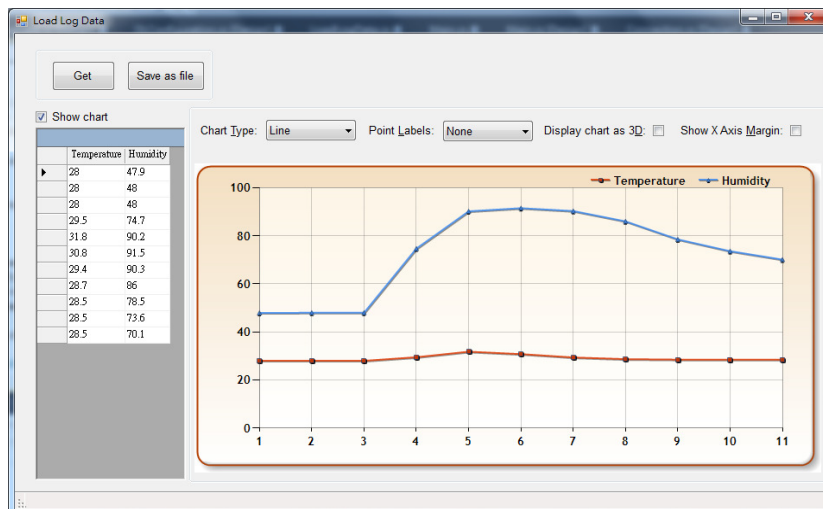


“Load Log Data” window will be displayed.


2. Click the **“Get”** button and wait until the data is successfully received.

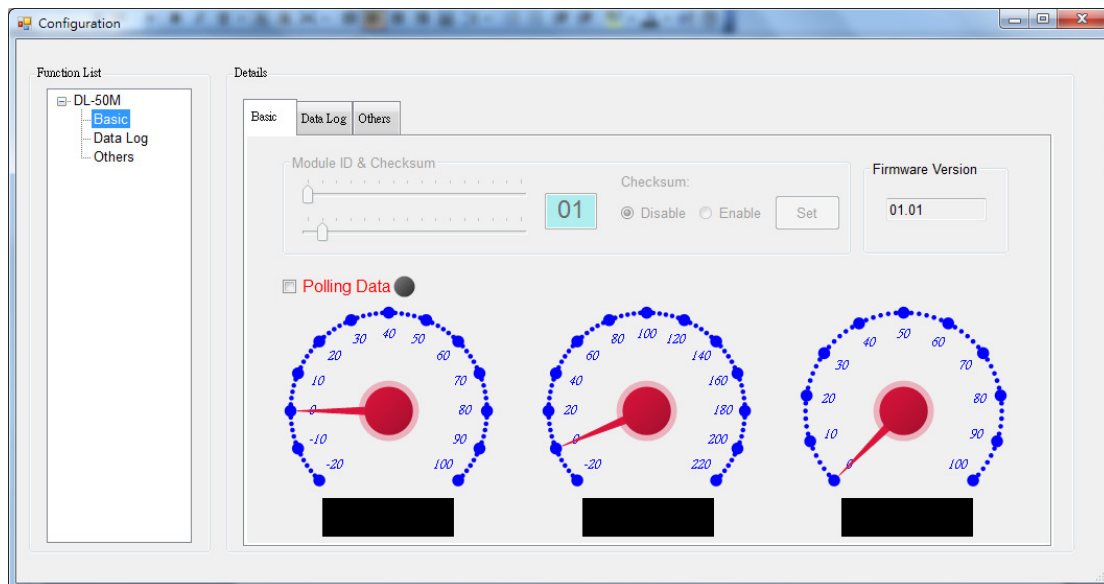


3. The log data which is retrieved from the DL-100TM485 will be listed in a table on the left hand side and displayed as a chart by checking the **“Show chart”** checkbox. Refer to the image below for more details.



Configuration

1. After a connection has been established between the PC and the DL-100TM485, the DL-100TM485 can be configured by either clicking the “” icon or the ***“Functions->Configuration”** menu option. The “Configuration” window will then be displayed showing the current configuration of the module. If any of the values are changed, click the “Set” button to update the configuration of the module.



2. When you successfully connect to the DL-100TM485 using the Utility software, the software will automatically disable the data log function. If the data log function is required ensure that the data log function is enabled before closing the Utility software.