



---

# Quick Start Guide for DS-700 Series

Written by Russell Chen  
Version 1.0, Dec. 2008

## 1 ..... What's on your package?

1. One DS-700 series device
2. One companion CD
3. One Quick Start Guide (this document)

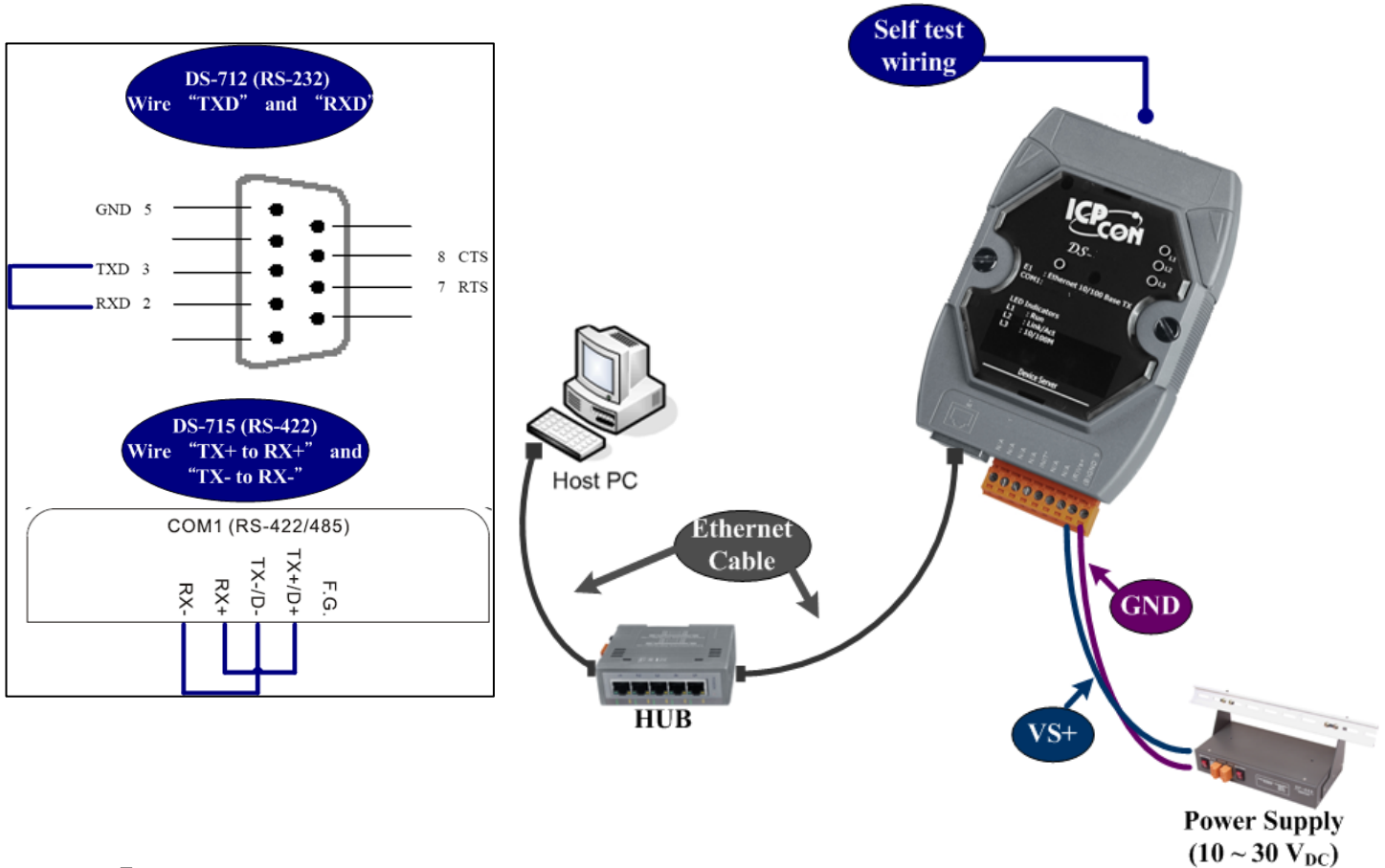
## 2 ..... Preparing for start-up your DS-700

1. Power Supply : +10V ~ +30V/DC (EX : DP-665)  
[http://www.icpdas.com/products/Accessories/power\\_supply/power\\_list.htm](http://www.icpdas.com/products/Accessories/power_supply/power_list.htm)
2. Hub (EX : NS-205)  
[http://www.icpdas.com/products/Switch/industrial/industrial\\_list.htm](http://www.icpdas.com/products/Switch/industrial/industrial_list.htm)
3. Make sure your PC has workable network setting.
4. Disable or well configure your Windows firewall and Anti-Virus firewall first, else the "Search Servers" on page 3 may not work.  
(Please contact your System Administrator)

# 3

## Connecting the Power and Host PC

1. Connect your DS-700 and PC to the same Ethernet Switch Hub or in the same sub-network.
2. Wire "RXD" and "TXD" of the DS-712 (RS-232).
3. Wire "TX+ to RX+" and "TX- to RX-" of the DS-715 (RS-422).



# 4

## Installing VxComm Utility on your PC

1. The software is located at :

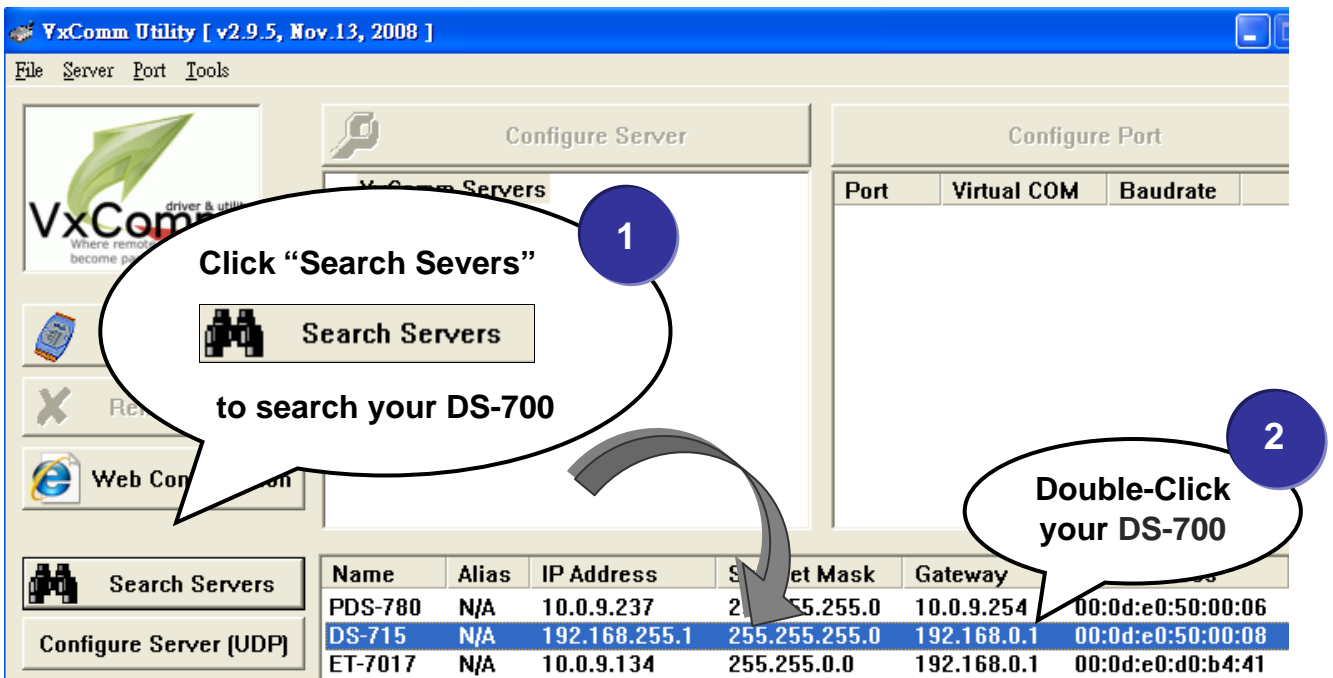
CD:\Napdos\driver\vxcomm\_driver\

[http://ftp.icpdas.com/pub/cd/8000cd/napdos/driver/vxcomm\\_driver/](http://ftp.icpdas.com/pub/cd/8000cd/napdos/driver/vxcomm_driver/)

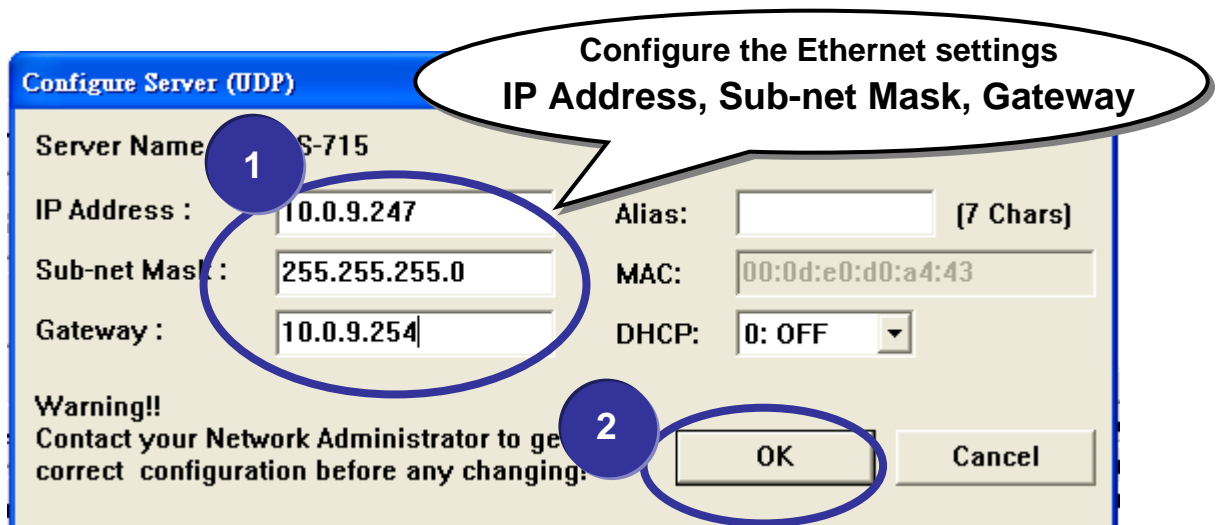
# 5 ..... Configuring Ethernet settings

Step 1 : Run VxComm Utility and then search your DS-700.

Step 2 : Double-Click your DS-700 to configure the Ethernet settings.



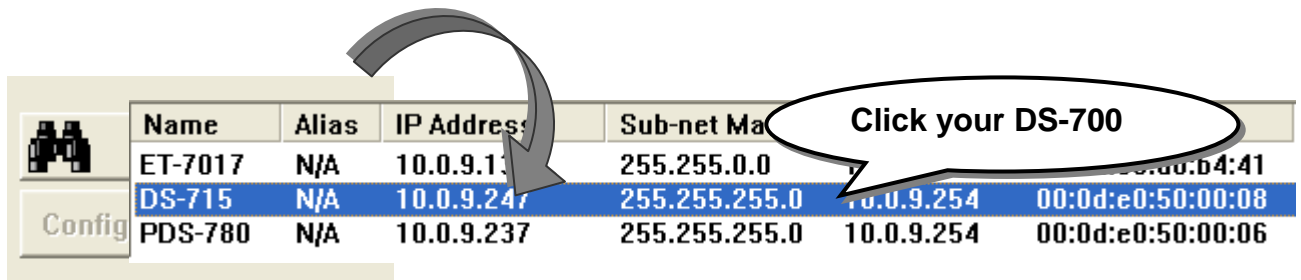
Step 3 : Contact your Network Administrator to get correct network configuration. Modify the network settings and then click "OK". The DS-700 will restart it-self immediately.



# 6

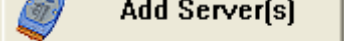
## Configuring virtual COM ports

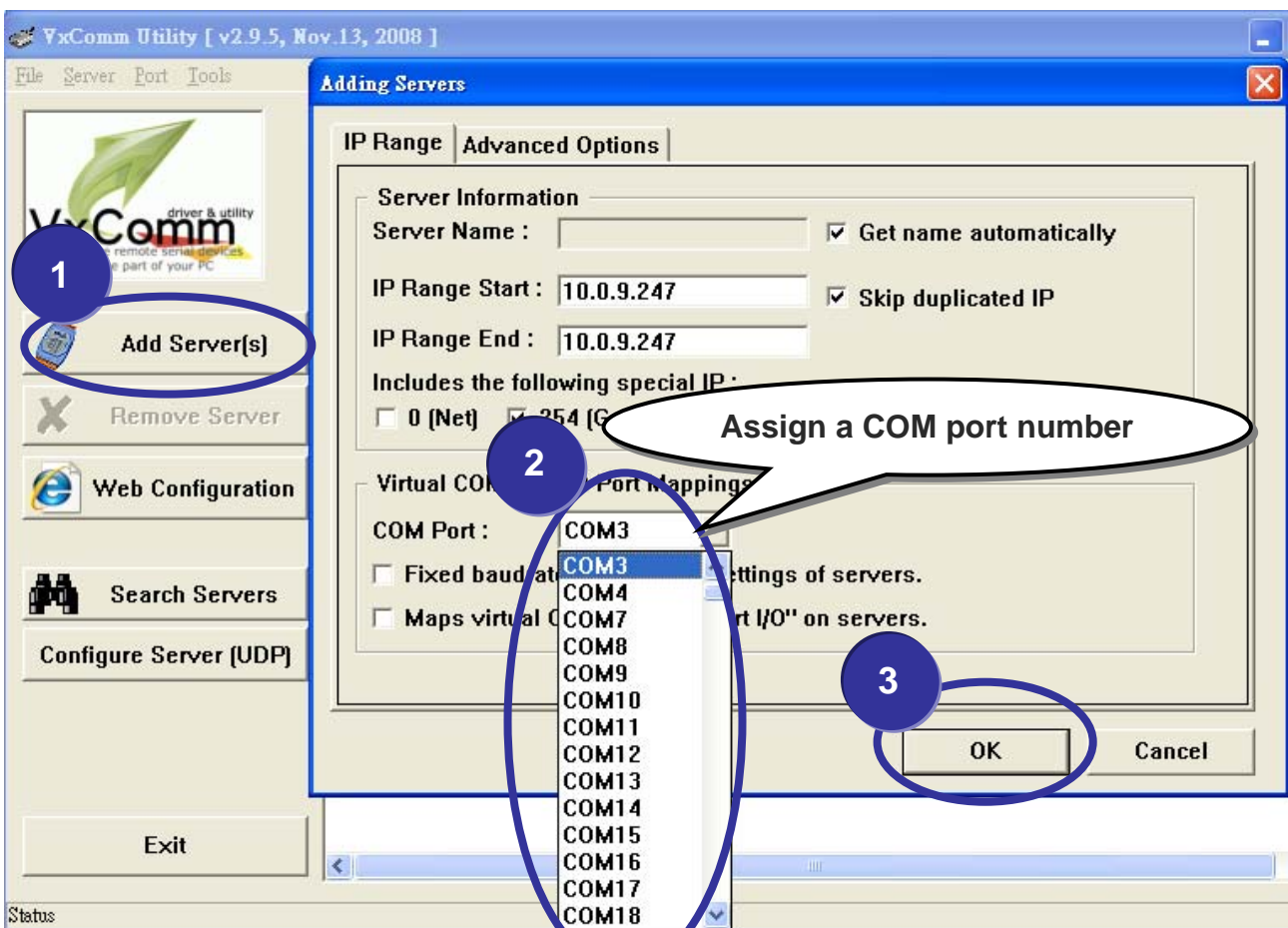
Step 1 : Again search out your DS-700, to show new IP/Mask/Gateway network setting and then click your DS-700.



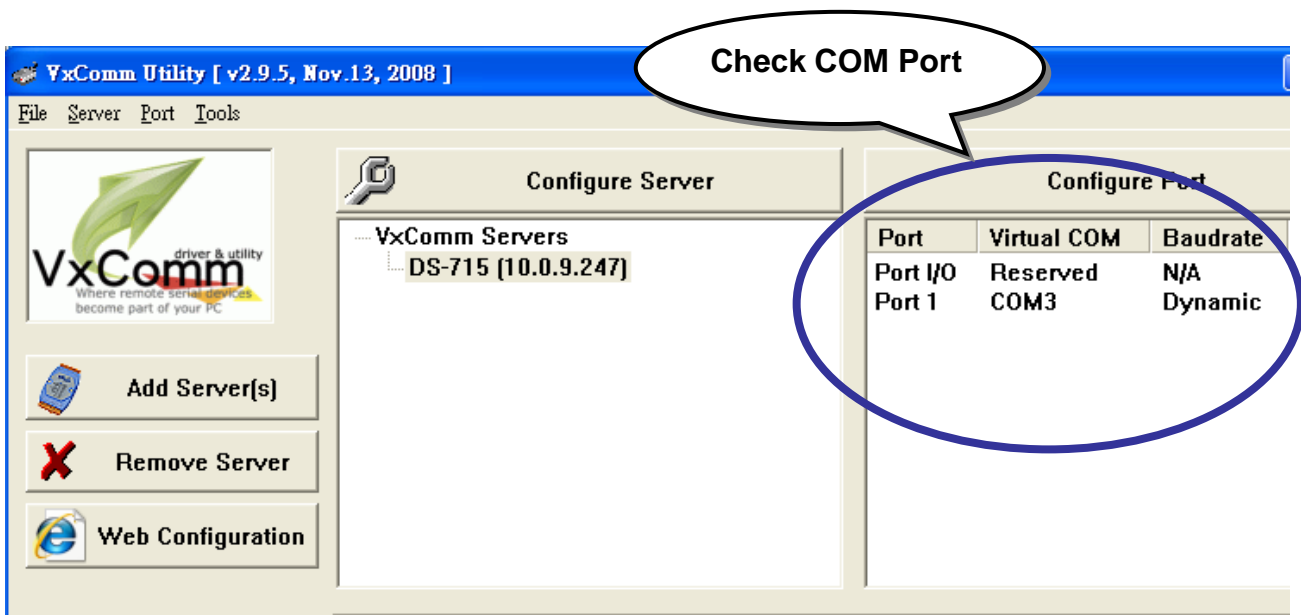
Name	Alias	IP Address	Sub-net Ma	Gateway	MAC
ET-7017	N/A	10.0.9.1	255.255.0.0		00:0d:e0:b4:41
DS-715	N/A	10.0.9.247	255.255.255.0	10.0.9.254	00:0d:e0:50:00:08
PDS-780	N/A	10.0.9.237	255.255.255.0	10.0.9.254	00:0d:e0:50:00:06

Click your DS-700

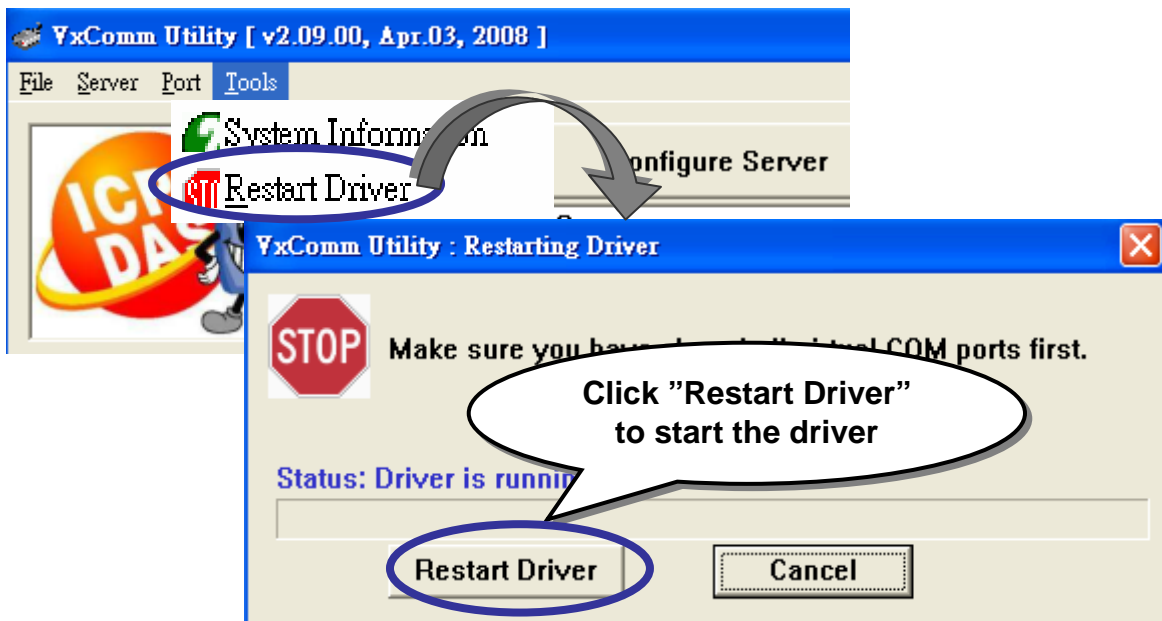
Step 2 : Click  and assign a COM port number and then click "OK".



### Step 3 : Check to configure the virtual COM Port.

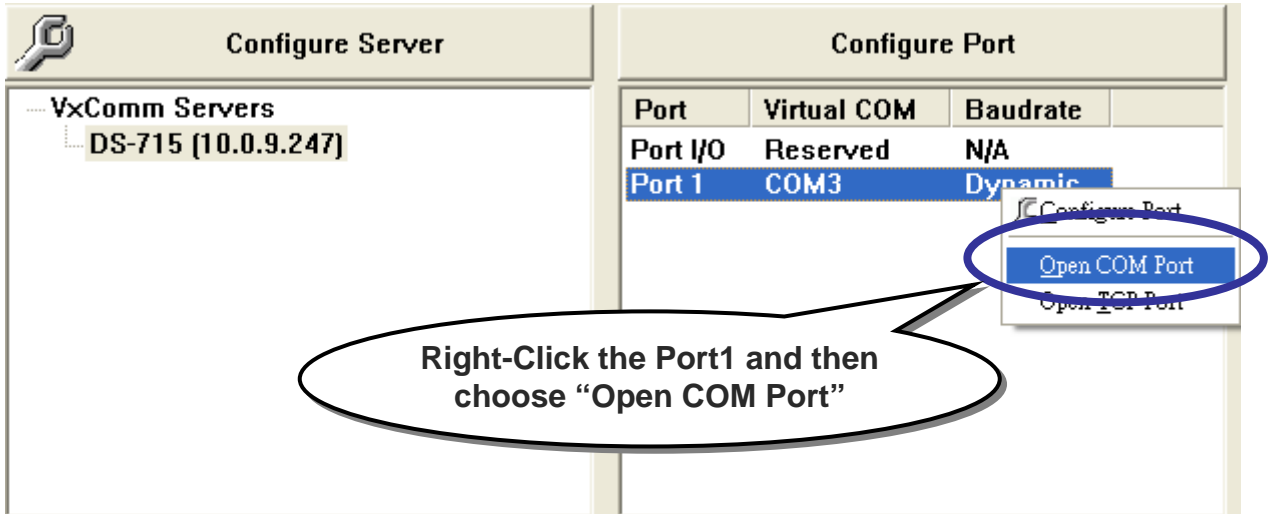


### Step 4 : Click “Tools / Restart Driver” and then click “Restart Driver” to start the driver.

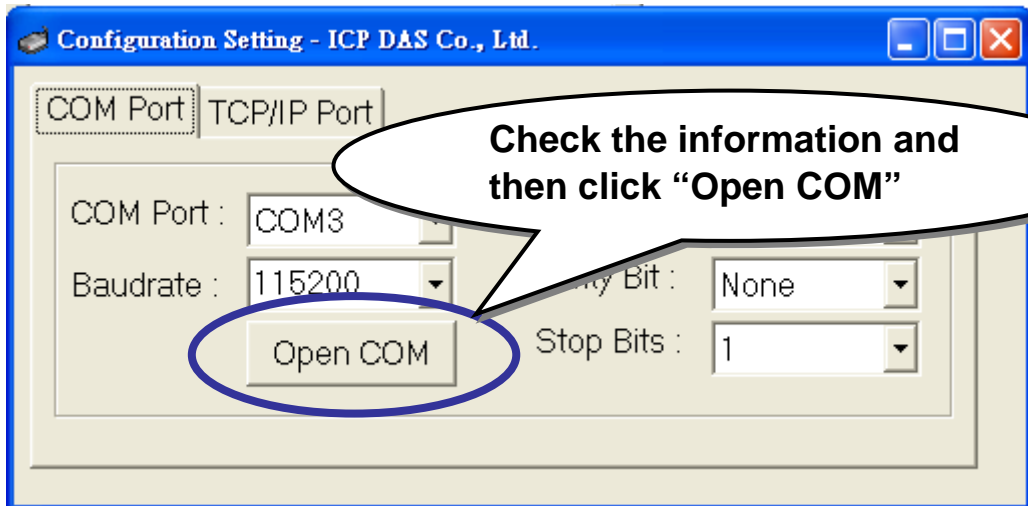


# 7 Testing your DS-700

Step 1 : Right-Click the Port1 and then choose “Open COM Port”.

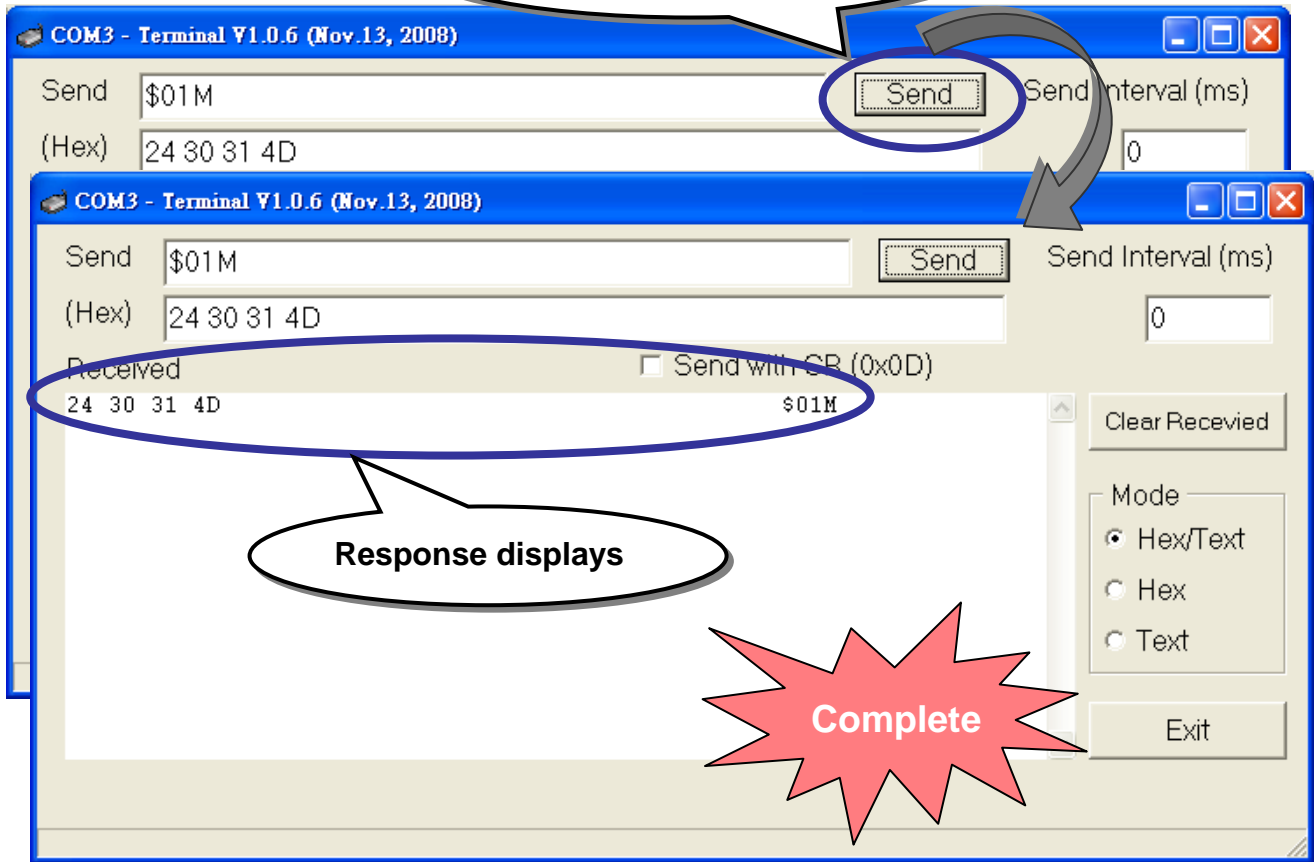


Step 2 : Check the COM Port's information and then click “Open COM”.



**Step 3 : Send a string and get a response.**

Click "Send" to send a string to your DS-700



Response displays

Complete

## Additional Information

### DS-700 Document :

CD:\Napdos\pds\pds-700\document\

<http://ftp.icpdas.com/pub/cd/8000cd/napdos/pds/pds-700/document/>

### DS-700 firmware :

CD:\Napdos\pds\ds-700\vxcomm\server(DS)\

[http://ftp.icpdas.com/pub/cd/8000cd/napdos/pds/ds-700/vxcomm/server\(ds\)/](http://ftp.icpdas.com/pub/cd/8000cd/napdos/pds/ds-700/vxcomm/server(ds)/)

### The ICP DAS Web Site

<http://www.icpdas.com>

- Technical support
- Supplies and ordering information
- Information to enhance the product
- FAQ & Application story



### Contact Us

[Service@icpdas.com](mailto:Service@icpdas.com)

Copyright @ 2007 by ICP DAS Co., Ltd. All rights are reserved.