



# I-7188E series Quick Start Manual

## Package Checklist

The package includes the following items:

- One I-7188E hardware module
- Two User Manuals
- One Quick Start Manual
- One companion CD containing software drivers and digital versions of the user manuals
- One RS-232 download cable (CA-0910)

## Related documents and firmware

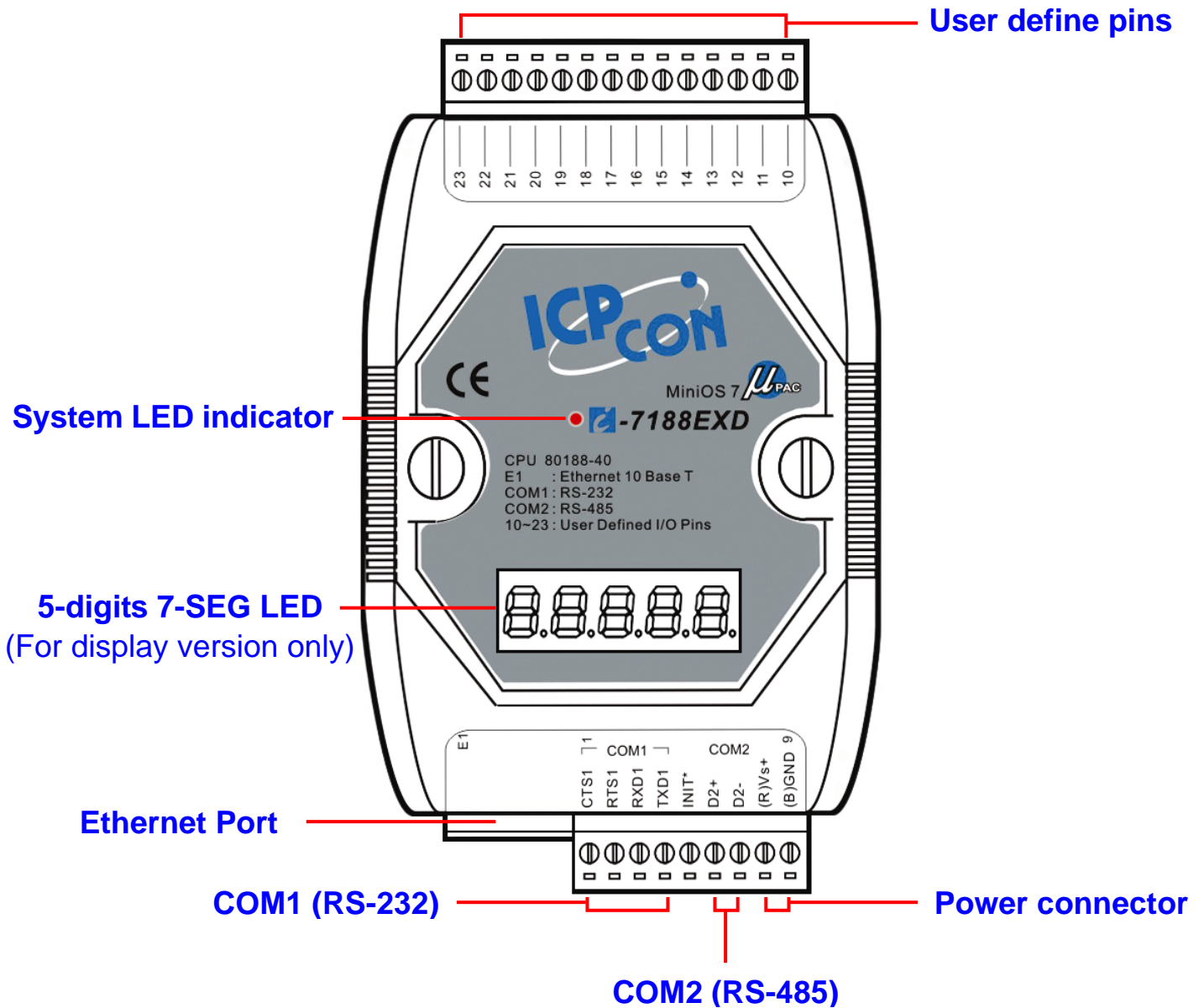
### Documents

- User Manual (software): 7188ess.pdf
- User Manual (hardware): 7188ehh.pdf
- Quick Start Manual: 7188E\_QuickStart\_Manual.pdf
- CD:\NAPDOS\7188E\Document\
- <http://ftp.icpdas.com/pub/cd/8000cd/napdos/7188e/document/>

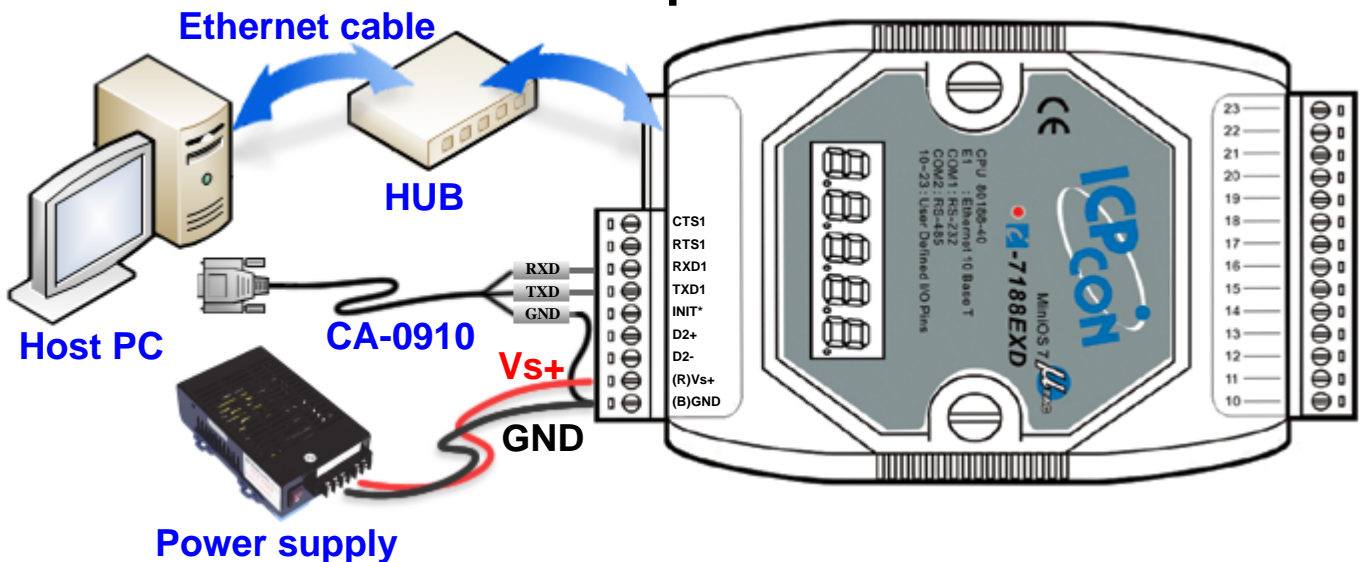
### Firmware

- CD:\NAPDOS\7188E\TCP\VxComm\Server(7188e)\
- [http://ftp.icpdas.com/pub/cd/8000cd/napdos/7188e/tcp/vxcomm/server\(7188e\)/](http://ftp.icpdas.com/pub/cd/8000cd/napdos/7188e/tcp/vxcomm/server(7188e)/)

## View of the I-7188E

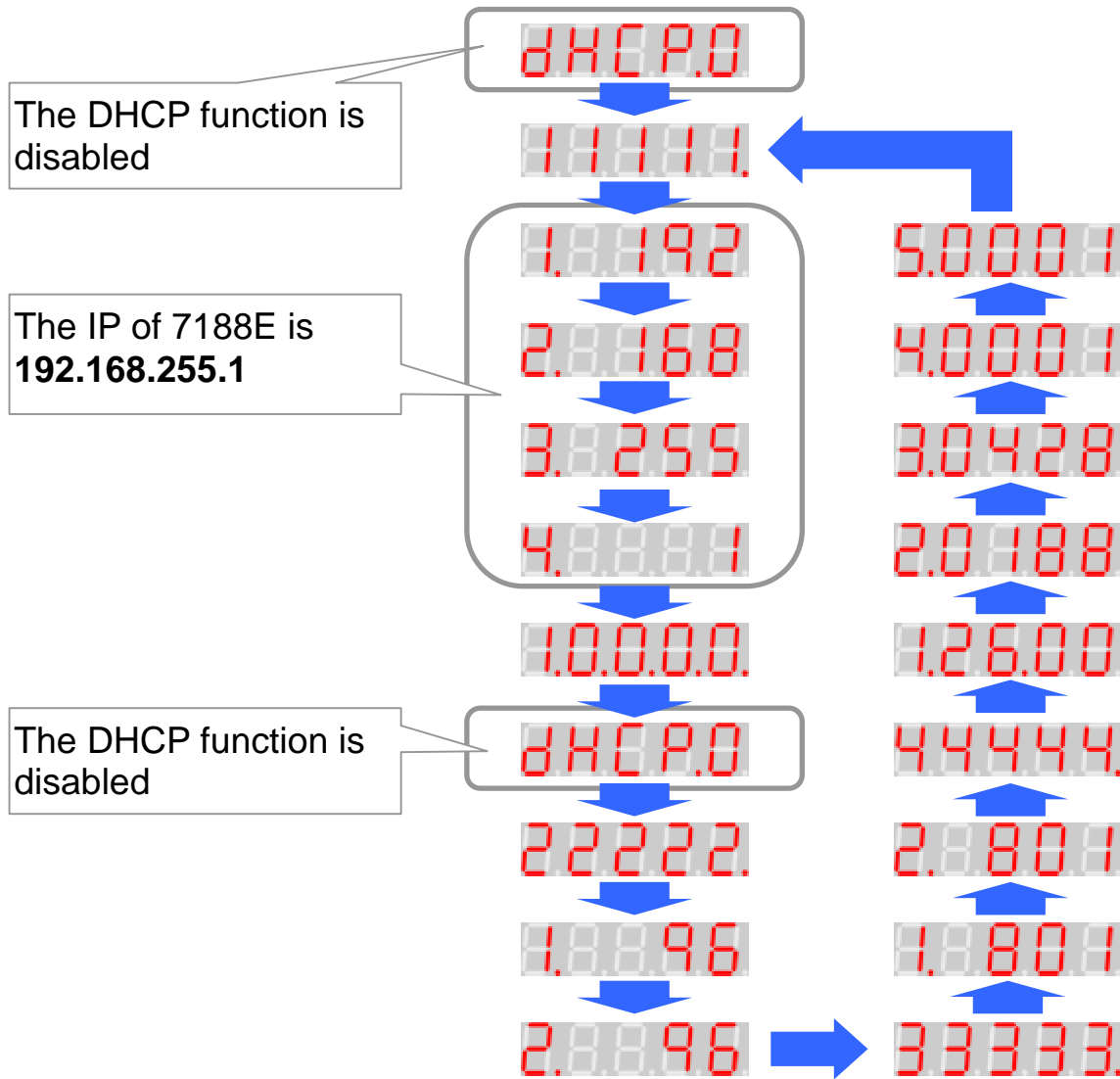


## Connect the I-7188E to power and Host PC

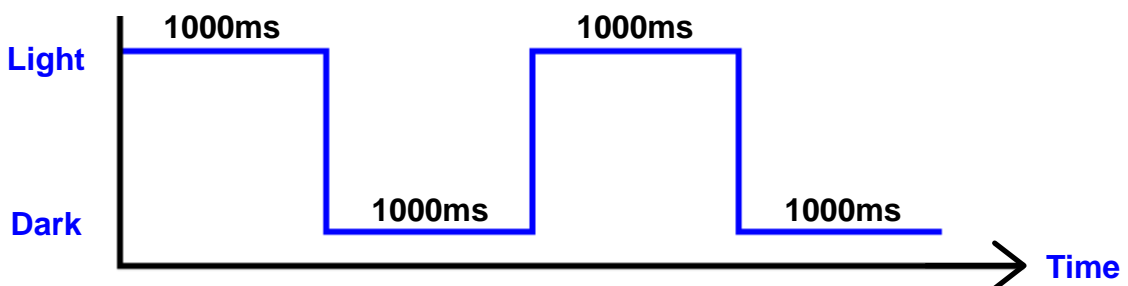


**Note:** Vs+ can be in a range from +10V to +30VDC.

After apply power to I-7188E, the 5-digits 7-SEG LED will show as follows:



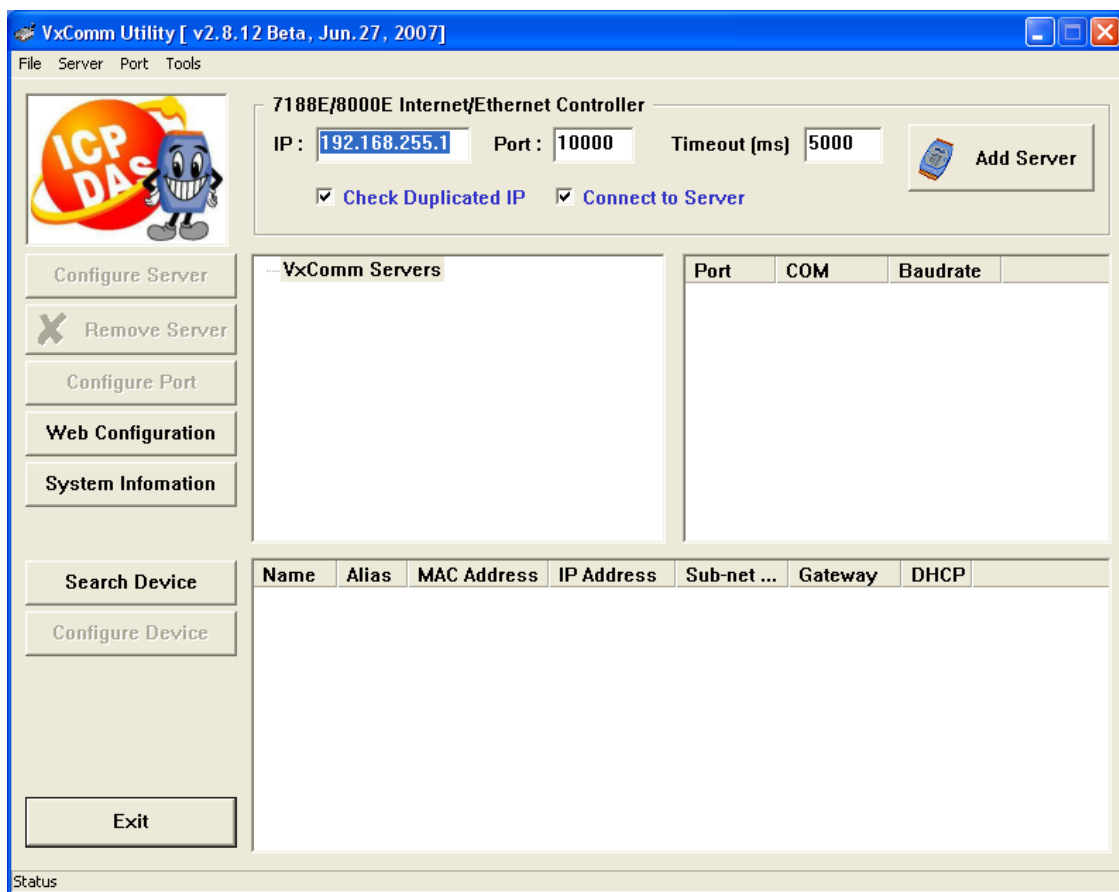
After apply power to I-7188E, the system LED indicator continuously blinks once and waits for one second before beginning the next cycle, as per the diagram below.



## Software Installation

### Install Vxcomm Utility

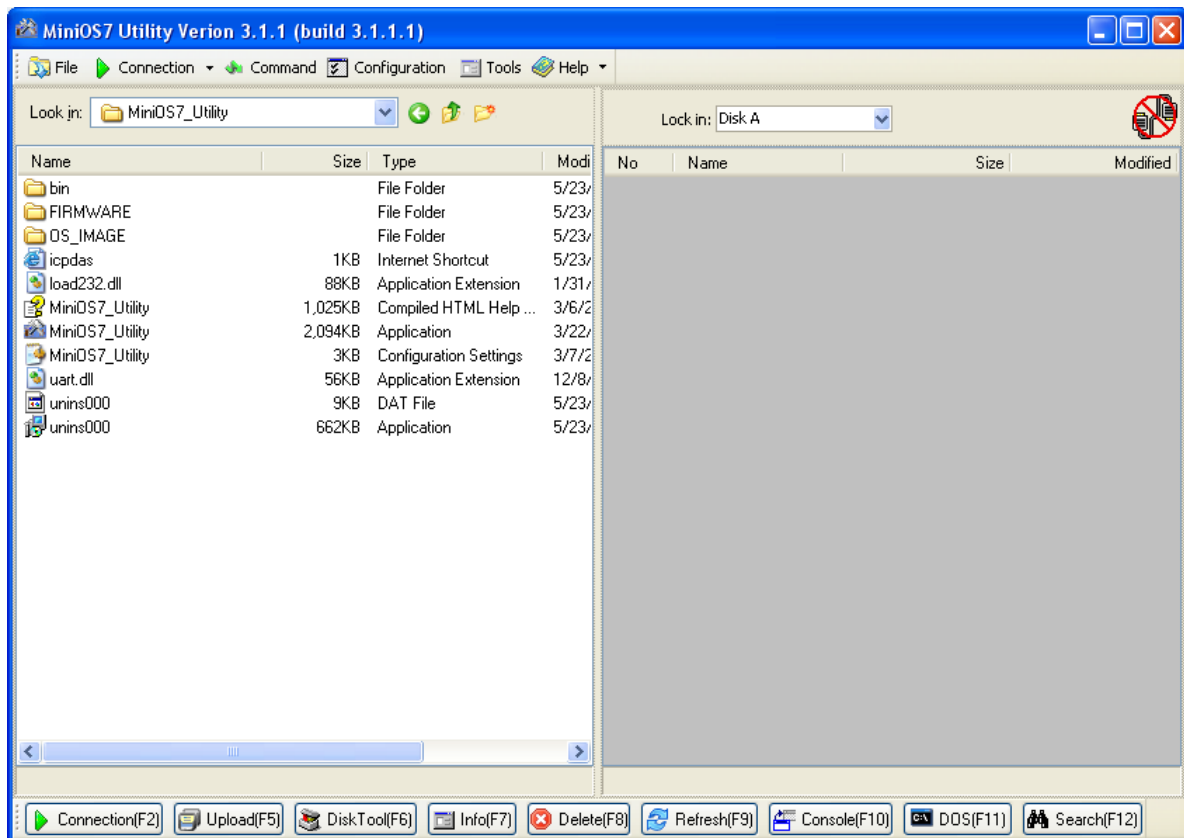
- The installation software can be obtained from the following location.
  - CD:\8000\Napdos\7188e\tcp\vxcomm\driver(pc)\
  - [http://ftp.icpdas.com/pub/cd/8000cd/napdos/7188e/tcp/vxcomm/driver\(pc\)/](http://ftp.icpdas.com/pub/cd/8000cd/napdos/7188e/tcp/vxcomm/driver(pc)/)
- After finishing the installation of Vxcomm Utility, it will ask you to restart your computer.
- After rebooting the computer, the VxComm Utility will ask you to configure the virtual COM. Please refer to next section for more information.



### Install MiniOS7 Utility

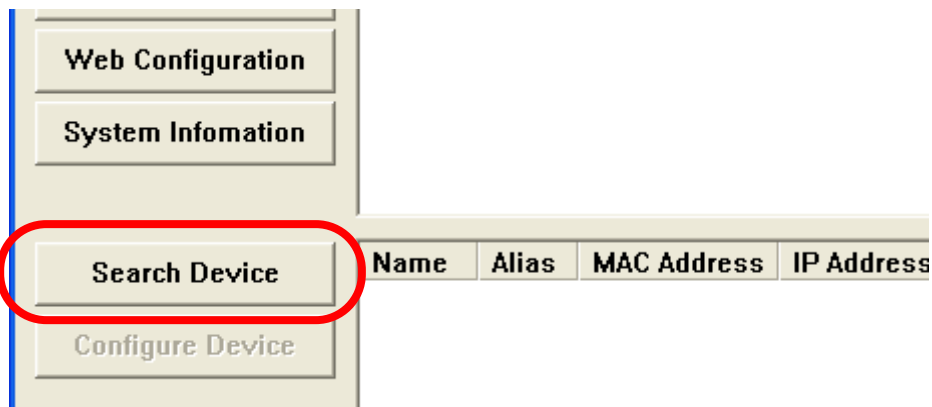
The installation software can be obtained from the following location.

- CD:\8000\Napdos\minios7\utility\minios7\_utility\
- [http://ftp.icpdas.com/pub/cd/8000cd/napdos/minios7/utility/minios7\\_utility/](http://ftp.icpdas.com/pub/cd/8000cd/napdos/minios7/utility/minios7_utility/)



## ➡ Configure the Ethernet settings of I-7188E

1. Run the Vxcomm Utility and then searches the I-7188E.



Name	Alias	MAC Address	IP Address	Sub-net ...	Gateway	DHCP
7188E2	N/A	00:0d:e0:00:42:3d	192.168.255.1	255.255....	192.168.0.1	OFF

The Ethernet settings of I-7188E2, which is found, will be displayed here.

2. Double-click the I-7188E to configure the Ethernet settings.

**Configure Device (UDP)**

Device Name : 7188E2

IP Address : 192.168.255.1 **Step 1**

Sub-net Mask : 255.255.0.0

Gateway : 192.168.0.1

Alias: N/A [7 Chars]

MAC: 00:0d:e0:00:42:3d

DHCP: 0: OFF

**Warning!!**  
Contact your Network Administrator to get correct configuration before any changing!

**Step 2**

OK Cancel

## ➔ Add an I-7188E server and configure the VxComm driver

1. Run the VxComm Utility. Type the IP address of the I-7188E server and click the **Add Server** button to add a new server.

7188E/8000E Internal Controller

IP : 192.168.255.1 **Step 1** Port : 10000 Timeout (ms) 5000 **Step 2**

Check Duplicated IP  Connect to Server

Add Server

Ensure that the **Check Duplicated IP** and **Connect to Server** options are both checked.

2. Configure the virtual COM port(s) by double-clicking Port1, Port2, etc.

VxComm Servers

7188E2 [192.168.255.1]

Port	COM	Baudrat
Port I/O	Reserved	Fixed
Port 1	UnMap	Dynamic
Port 2	UnMap	Dynamic

**Step 1**

Port Configuration

Server: 7188E2 [192.168.255.1], Port 1

Port Mapping (PC) | Port Setting (Device)

Select COM

COM2 **Step 2**

COM3

COM4

COM5

COM6

COM7

COM8

COM9

COM10

COM11

COM12

COM13

COM14

COM15

Re-assign COM ports

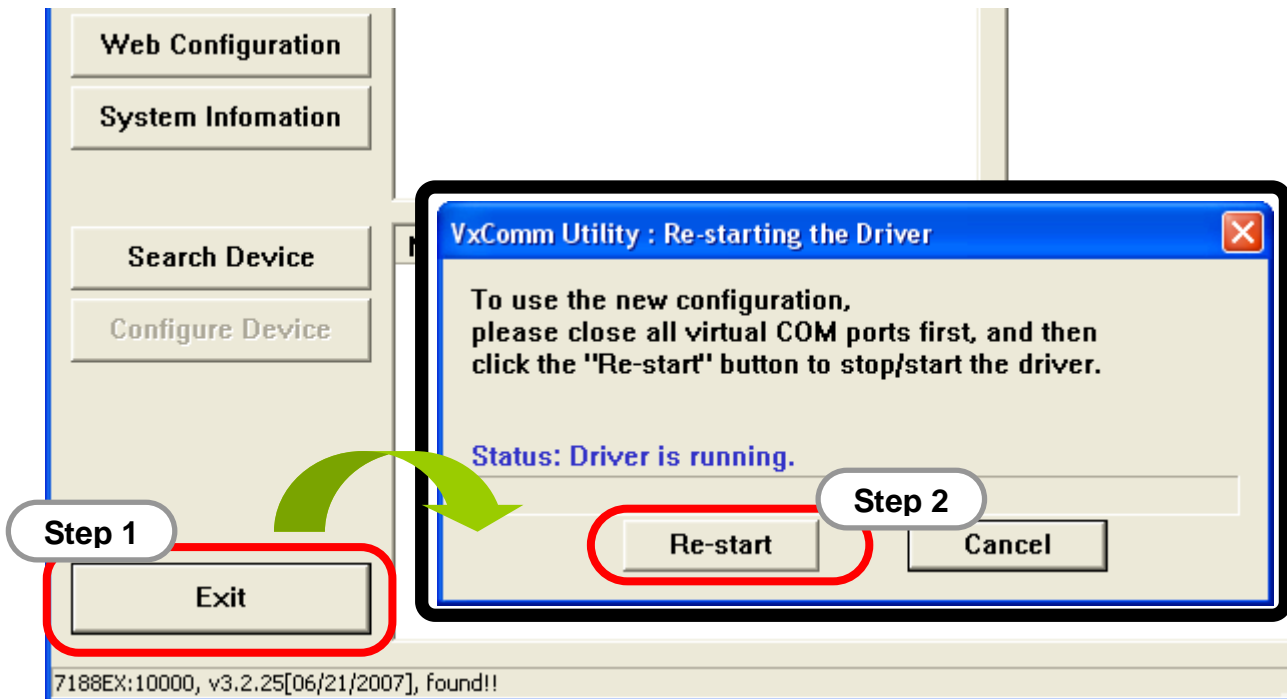
Skip baud rate and data format changes.

Virtual COM Port (Less conflict)

**Step 3**

OK Cancel

3. Click the **Re-start** button to re-start the driver.

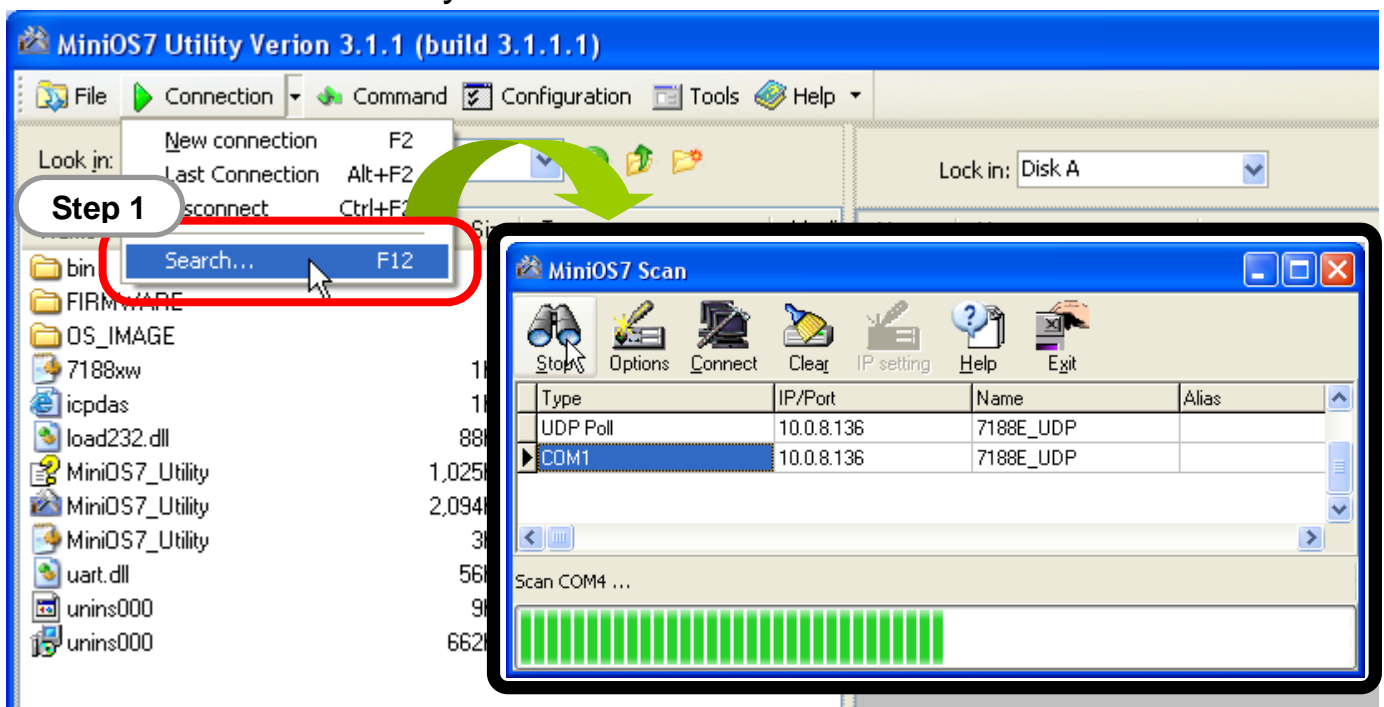


## ➡ Download VxComm firmware to the I-7188E

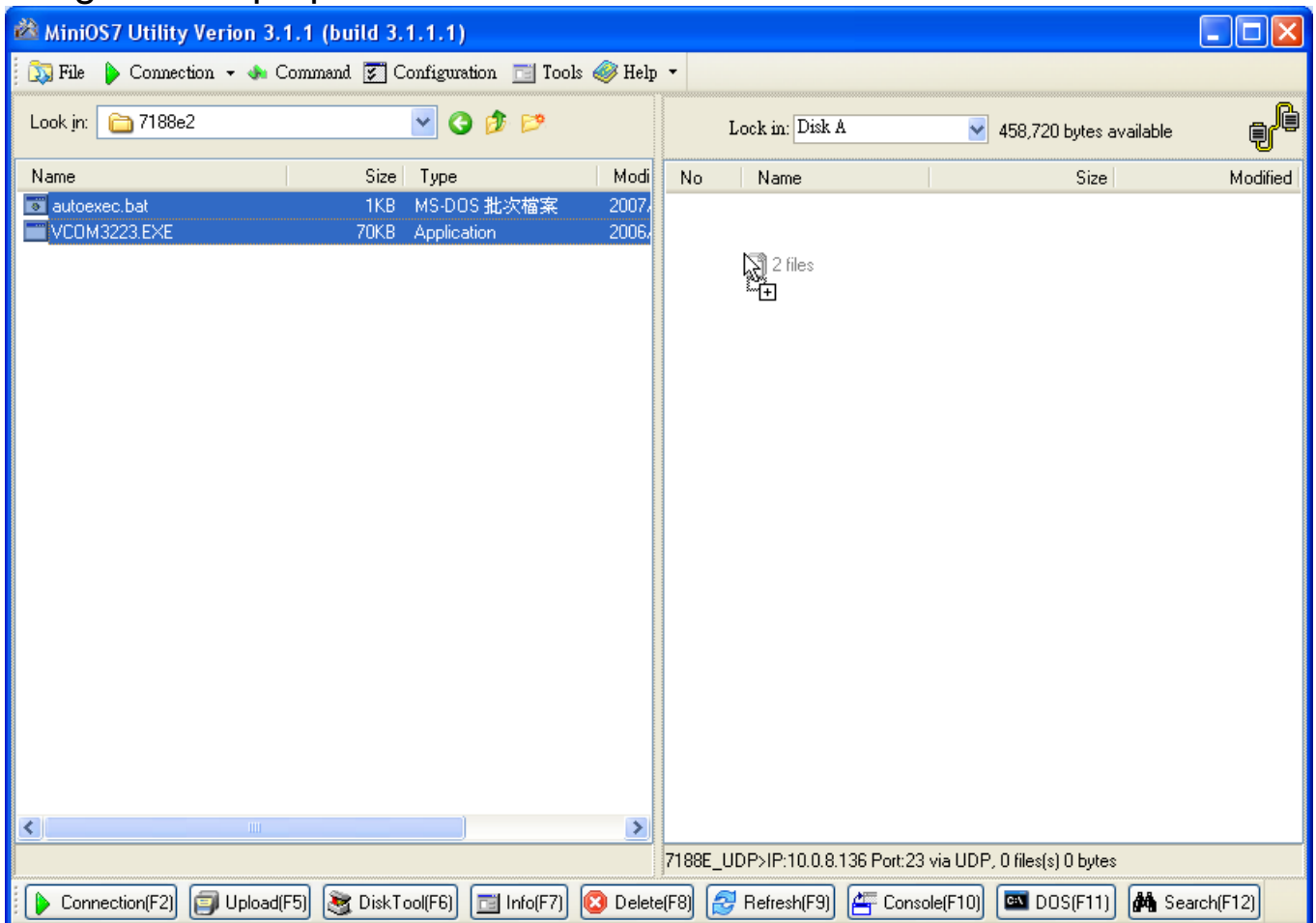
1. The VxComm firmware, vcomnnnn.exe, can be obtained from the following location:

- CD:\NAPDOS\7188E\TCP\VxComm\Server(7188e)\
- [http://ftp.icpdas.com/pub/cd/8000cd/napdos/7188e/tcp/vxcomm/server\(7188e\)/](http://ftp.icpdas.com/pub/cd/8000cd/napdos/7188e/tcp/vxcomm/server(7188e)/)

2. Run the MiniOS7 Utility and then search the I-7188E.



3. Point to the module that you want to use in the search result, and then double-click to return to main window of MiniOS7 Utility.
4. Move the files from left hand window to right hand window using a drag-and-drop operation to download files to I-7188E.



## Technical Support

1. ICP DAS Service E-mail Account: [service@icpdas.com](mailto:service@icpdas.com)
2. ICP DAS Website: [www.icpdas.com](http://www.icpdas.com)