



Quick Start Guide for 7188EX Series

Written by Anna Huang
Version 1.0, Beta
November 2007

Welcome

Congratulations on your purchase of the 7188EX series device. Your new device is designed to provide data acquisition and control via Ethernet. This Guide offers information to guide you

Step 1 ~ Step 4 - Start-up your device

Step 5 ~ Step 7 - Configure device's Ethernet settings

Step 8 ~ Step 11 - Download program to your device.

For more information, please refer to the User's Manual.

CD:\Napedos\7188e\document\

<http://ftp.icpdas.com/pub/cd/8000cd/napdos/7188e/document/>

1

What's on your package?

1. 7188EX series device
2. Companion CD
3. User Manual x 2 (Hardware and Software)
4. Quick Start Guide
5. RS-232 download cable (CA-0910)

2

Preparing for start-up your device

1. Power Supply : +10V ~ +30V/DC (EX : DP-665)

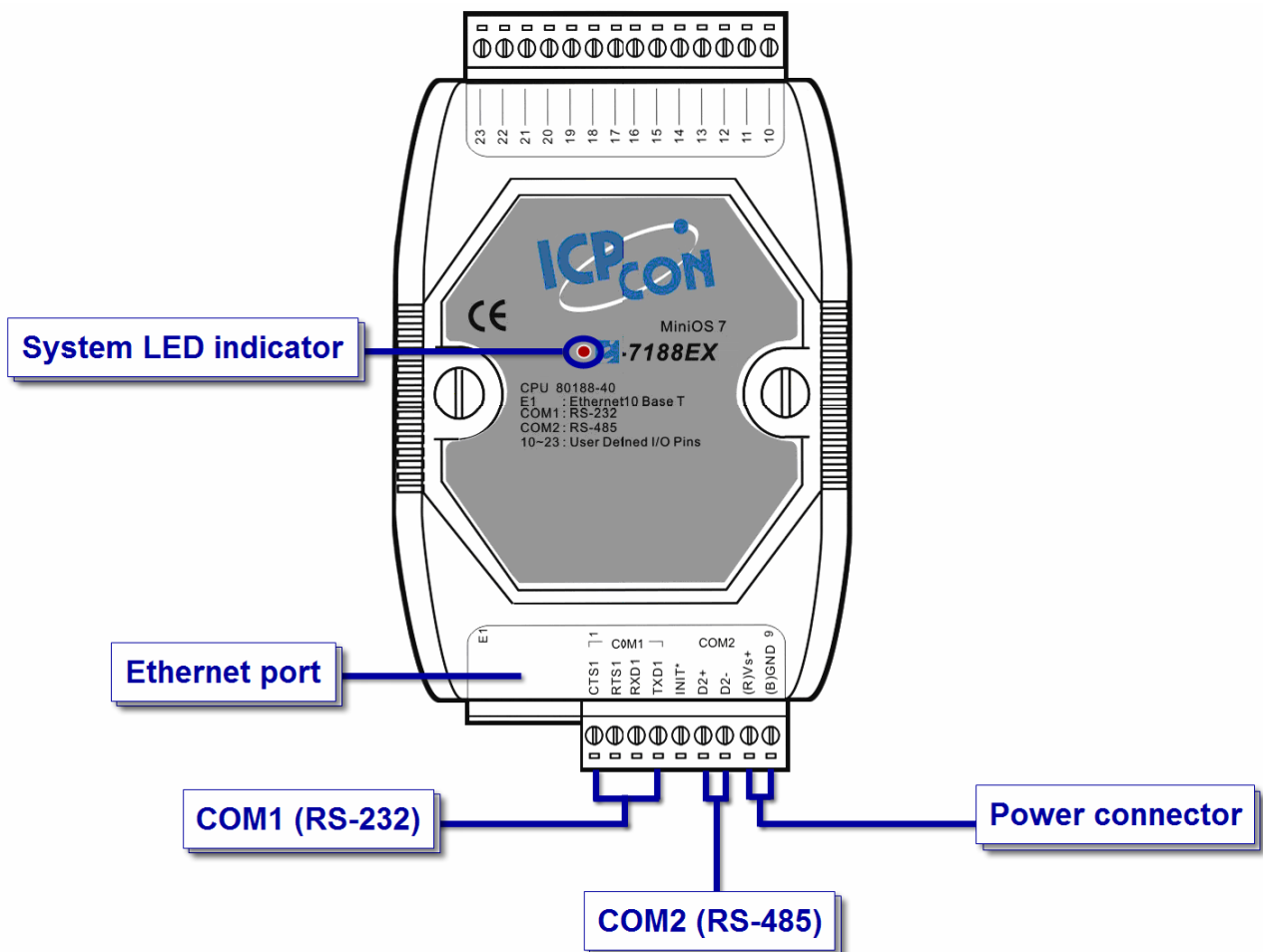
http://www.icpdas.com/products/Accessories/power_supply/powerlist.htm

2. Hub (EX : NS-205)

http://www.icpdas.com/products/Switch/industrial/industrial_list.htm

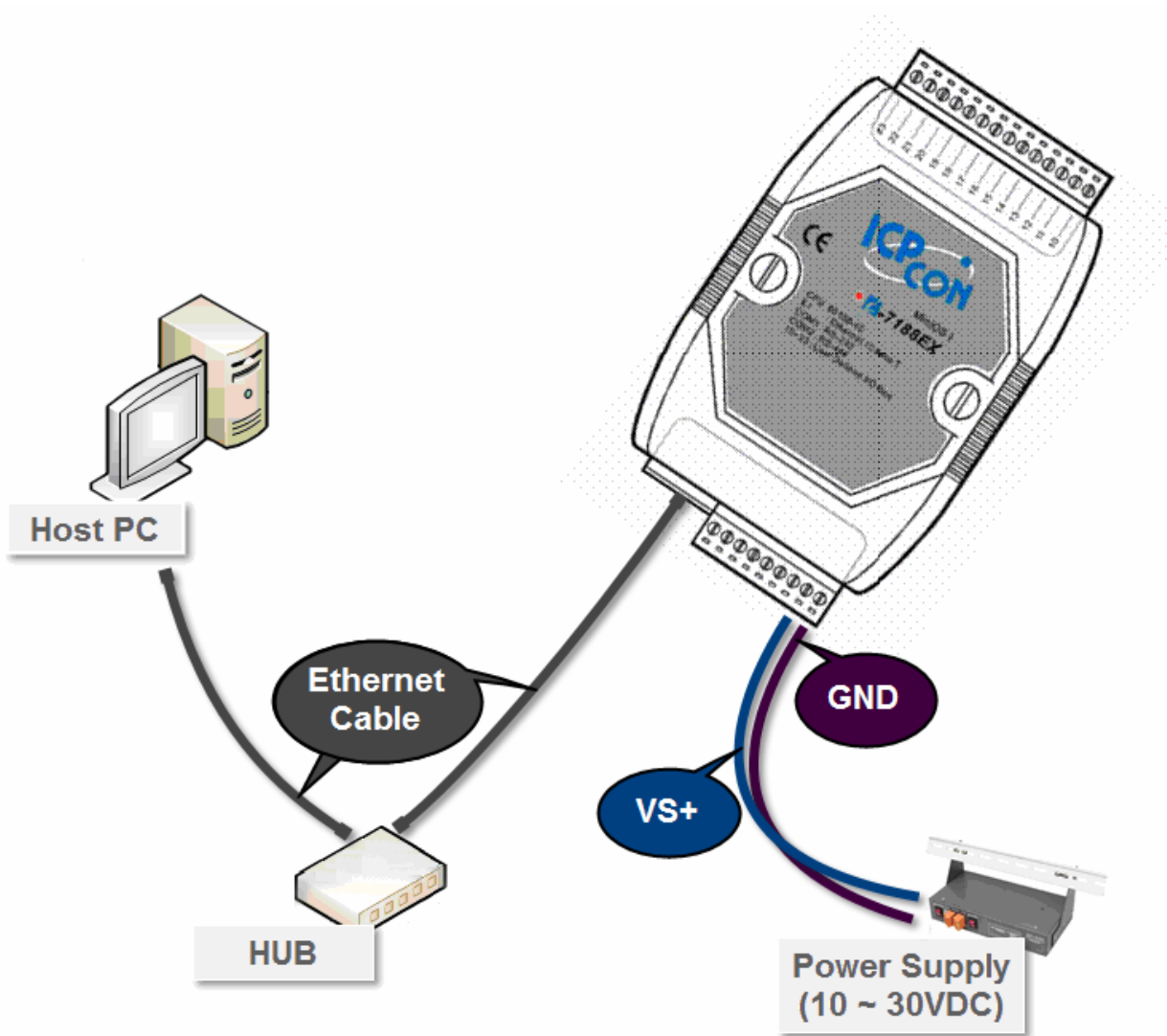
3

Understanding your device



4

Connecting the Power and Host PC



5

Installing VxComm Utility on your PC

The software is located at :

CD:\Napdos\7188e\tcp\vxcomm\driver(pc)\

[http://ftp.icpdas.com/pub/cd/8000cd/napdos/7188e/tcp/vxcomm/driver\(pc\)/](http://ftp.icpdas.com/pub/cd/8000cd/napdos/7188e/tcp/vxcomm/driver(pc)/)

6

Configuring Ethernet settings

6.1 : Run VxComm Utility and then search your device.

The screenshot shows the VxComm Utility application window. At the top, there's a menu bar with 'File', 'Server', 'Port', and 'Tools'. Below the menu is a toolbar with icons for 'Remove Server', 'Configure', 'Web', 'Search Servers', and 'Configure Server (UDP)'. The main area is divided into two sections. The top section is titled 'Add to VxComm Servers list' and contains input fields for 'IP' (192.168.255.1), 'Port' (10000), and 'Timeout (ms)' (5000). There are also checkboxes for 'Check Duplicated IP' and 'Connect to Server', and an 'Add Server' button. The bottom section is a table with columns: 'Name', 'Alias', 'MAC Address', 'IP Address', 'Sub-net ...', 'Gateway', and 'DHCP'. A callout bubble points to the 'Search Servers' button in the toolbar, containing the text: 'Click "Search Servers" to search your device'. Below the screenshot, a table shows the search results.

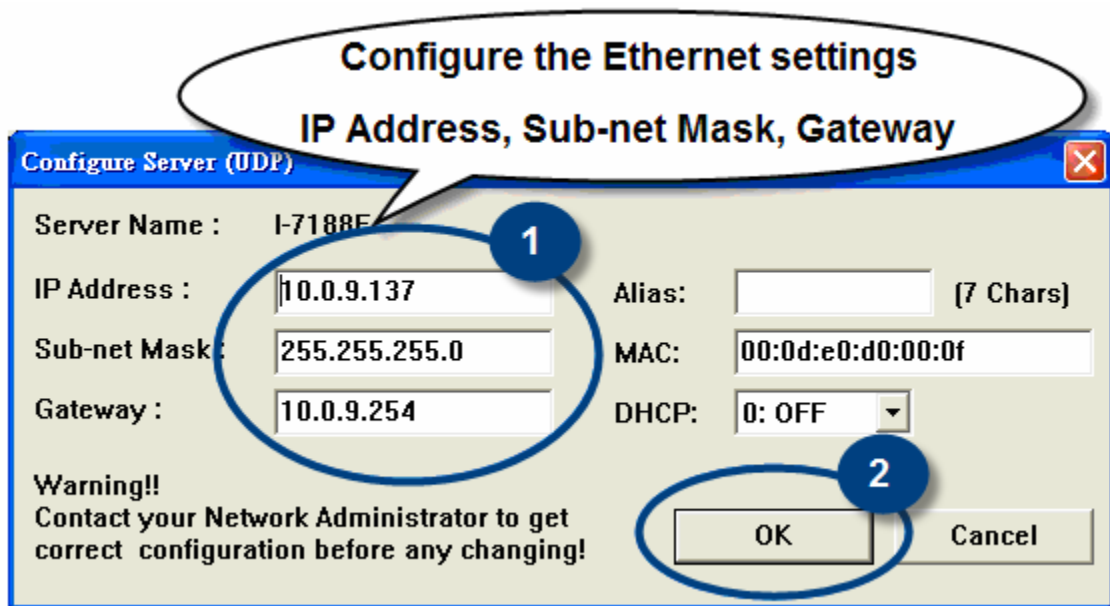
Name	Alias	MAC Address	IP Address	Sub-net Mask	Gateway	DHCP
7188...	N/A	00:0d:e0:d0:3e:cf	192.168.255.1	255.255.255.0	192.168.0.1	OFF

6.2 : Double-Click your device to configure Ethernet settings.

A callout bubble with a speech bubble tail pointing to the first row of the table below. The bubble contains the text: 'Double-Click your device'. Below the bubble is a table with the same columns as in the previous screenshot.

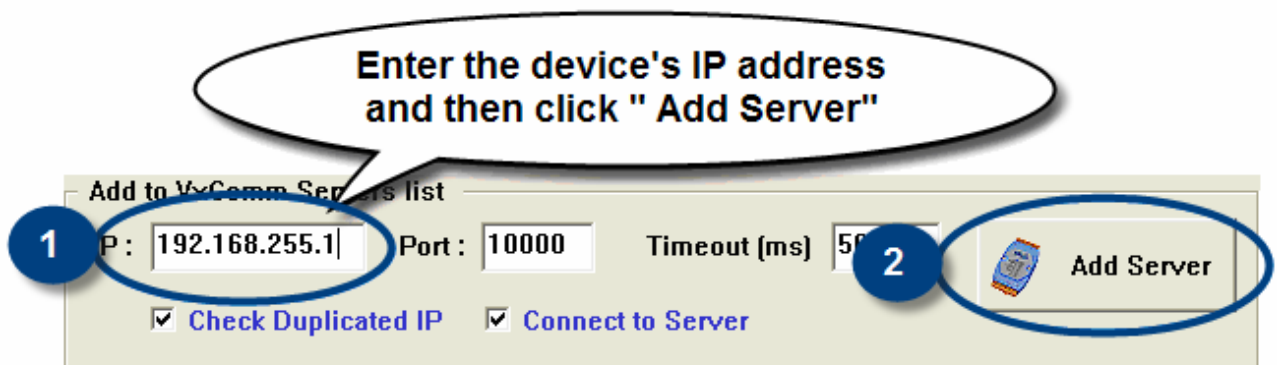
Name	Alias	MAC Address	IP Address	Sub-net Mask	Gateway	DHCP
7188...	N/A	00:0d:e0:d0:3e:cf	192.168.255.1	255.255.255.0	192.168.0.1	OFF

6.3 : Contact your Network Administrator to get correct network configuration. Modify the network setting and then Click “OK”.

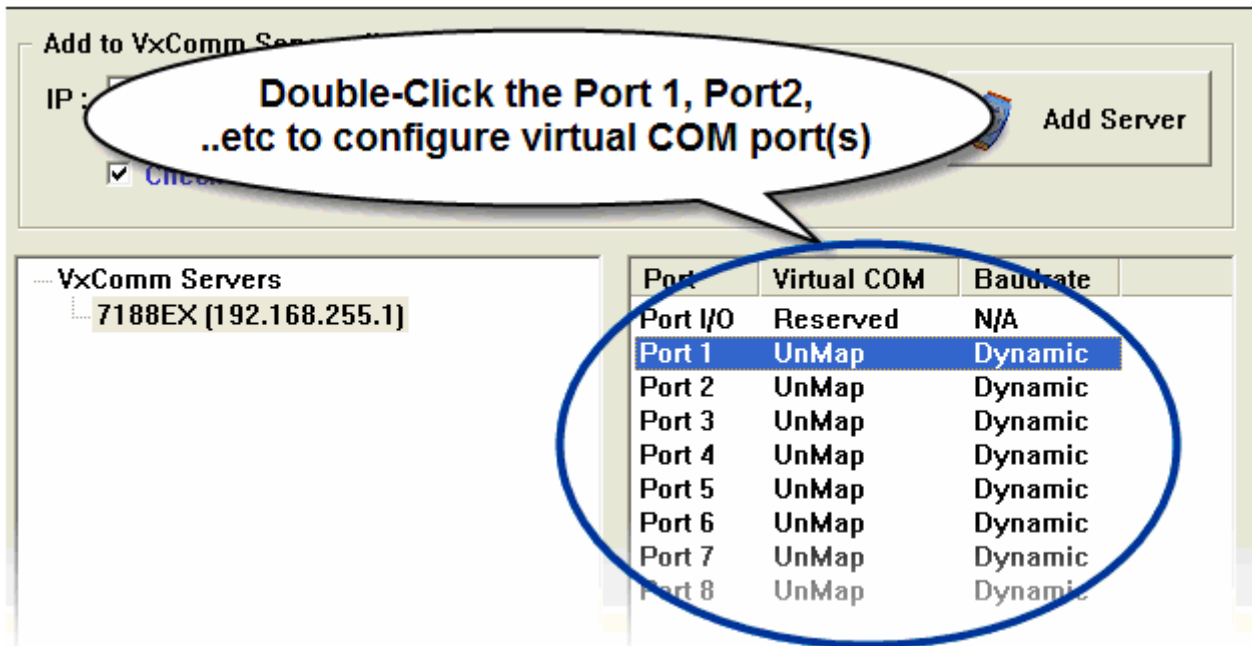


7 Configuring virtual COM ports

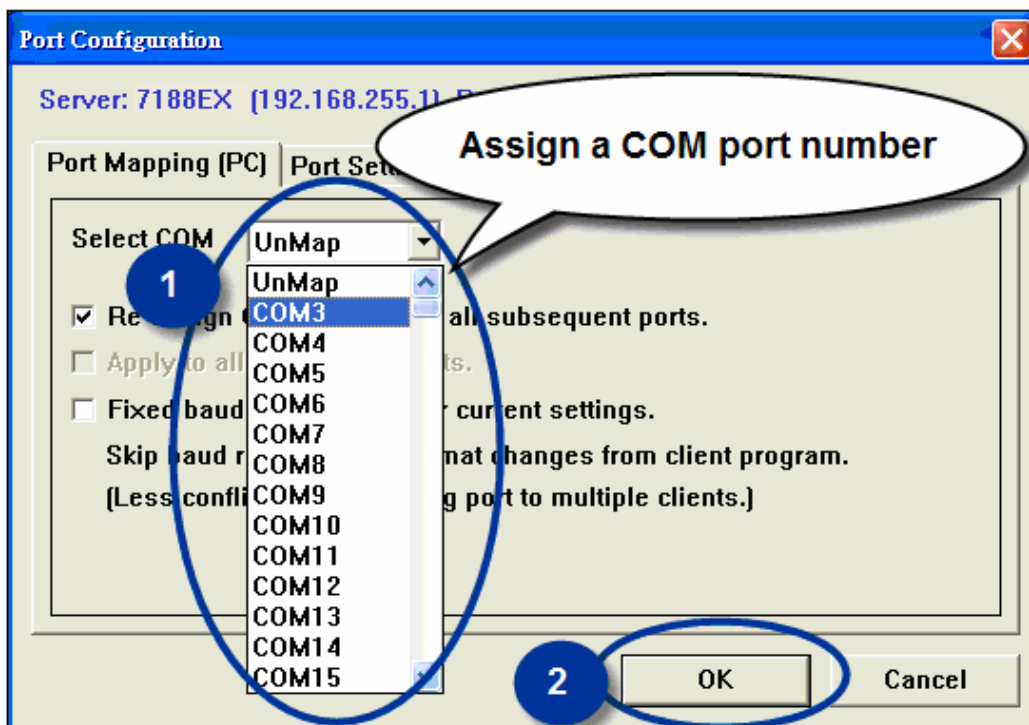
7.1 : Run VxComm Utility. Enter the your device’s IP address and then click “Add Server” to add a new server.



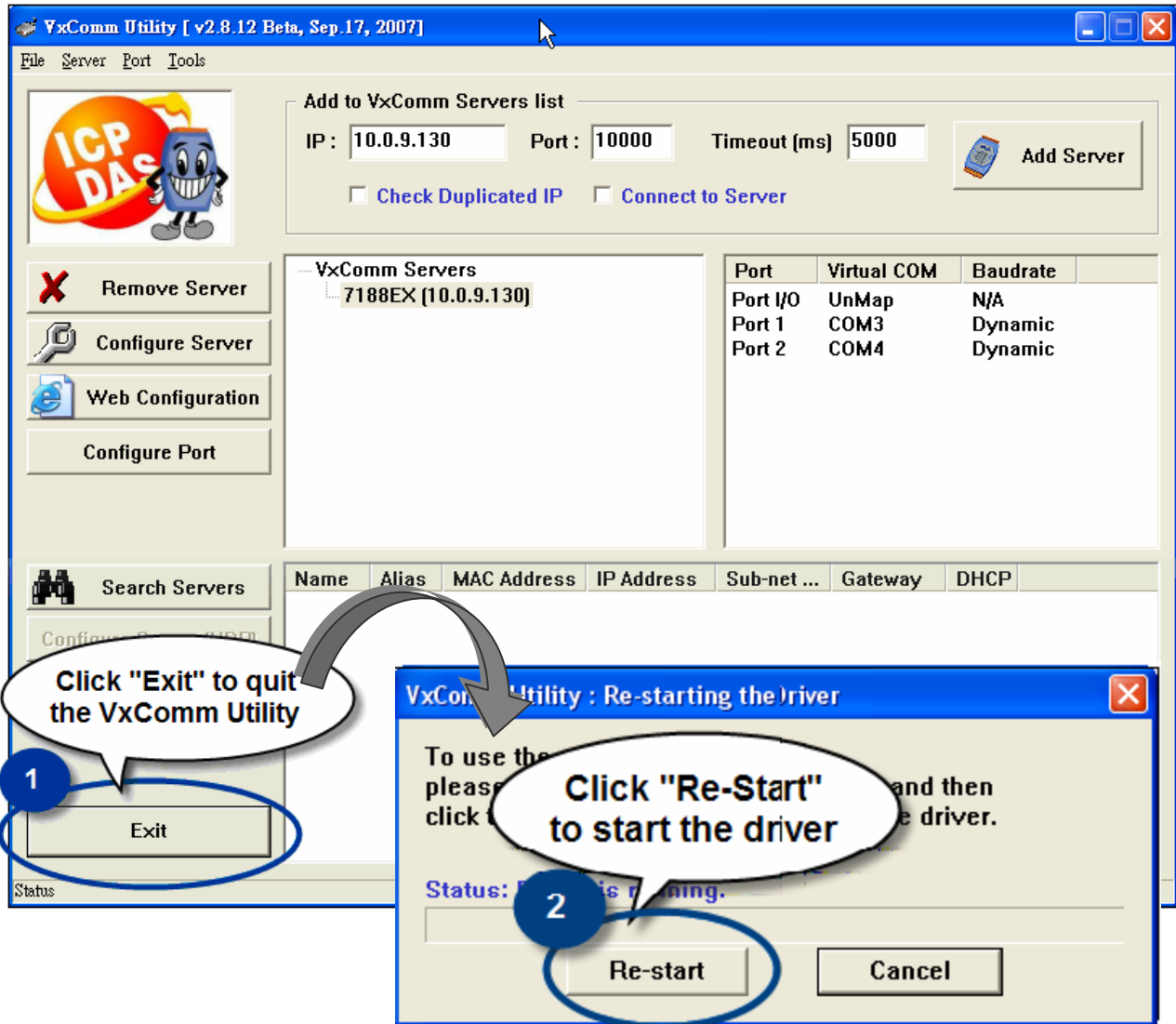
7.2 : Double-Click “Port 1, Port 2, etc” to configure the virtual COM port.



7.3 : Assign a COM port number and then click “OK”.



7.4 : Click “Exit” to quit the VxComm Utility and then Click “Re-Start” to start the driver.



8

Installing MiniOS7 Utility on your PC

The software is located at :

CD:\Napdos\minios7\utility\minios7_utility\

http://ftp.icpdas.com/pub/cd/8000cd/napdos/minios7/utility/minios7_utility/

9

Connecting download cable

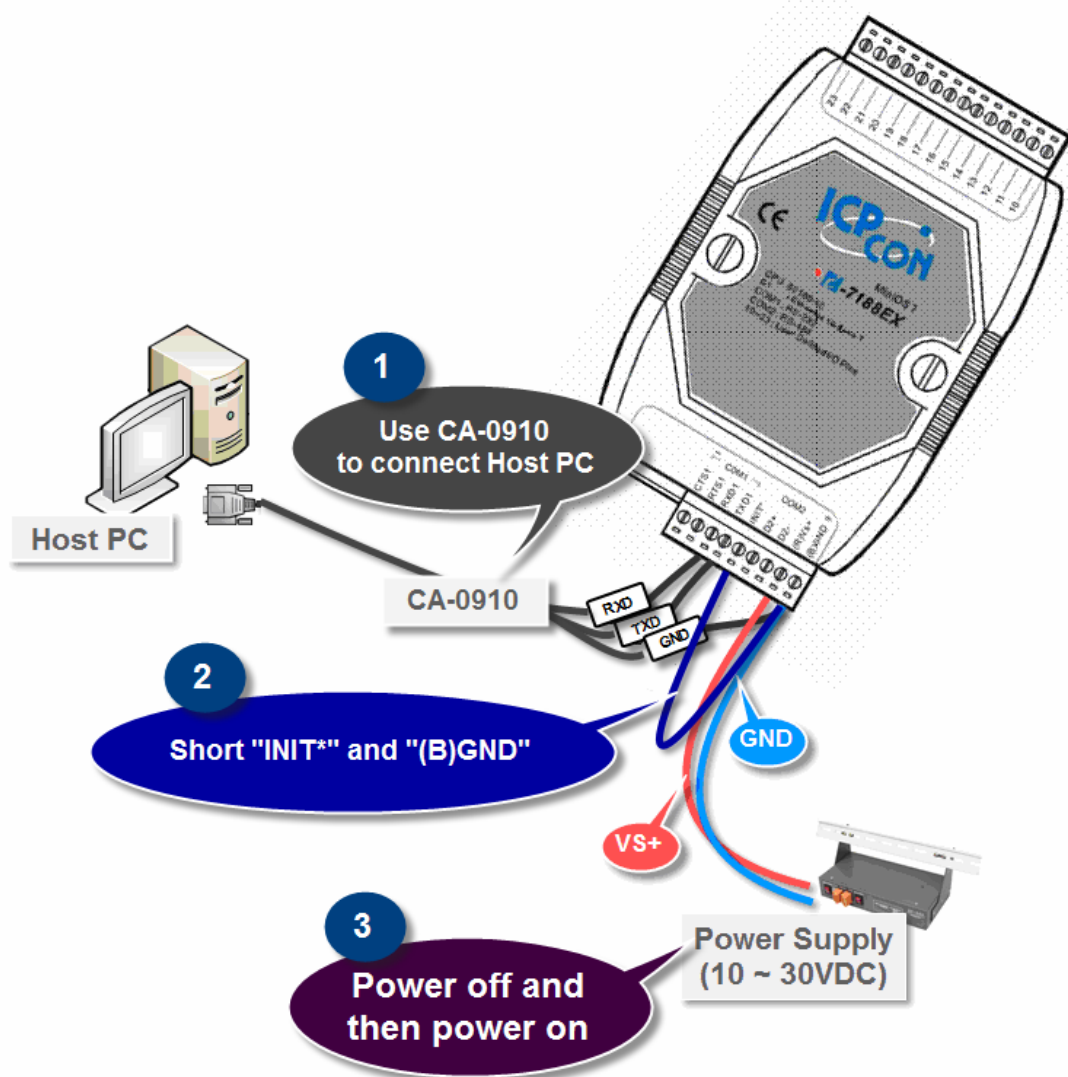
and disable the running program

Before connecting a device by Serial Port or UDP, ensure that no other program is running on the device.

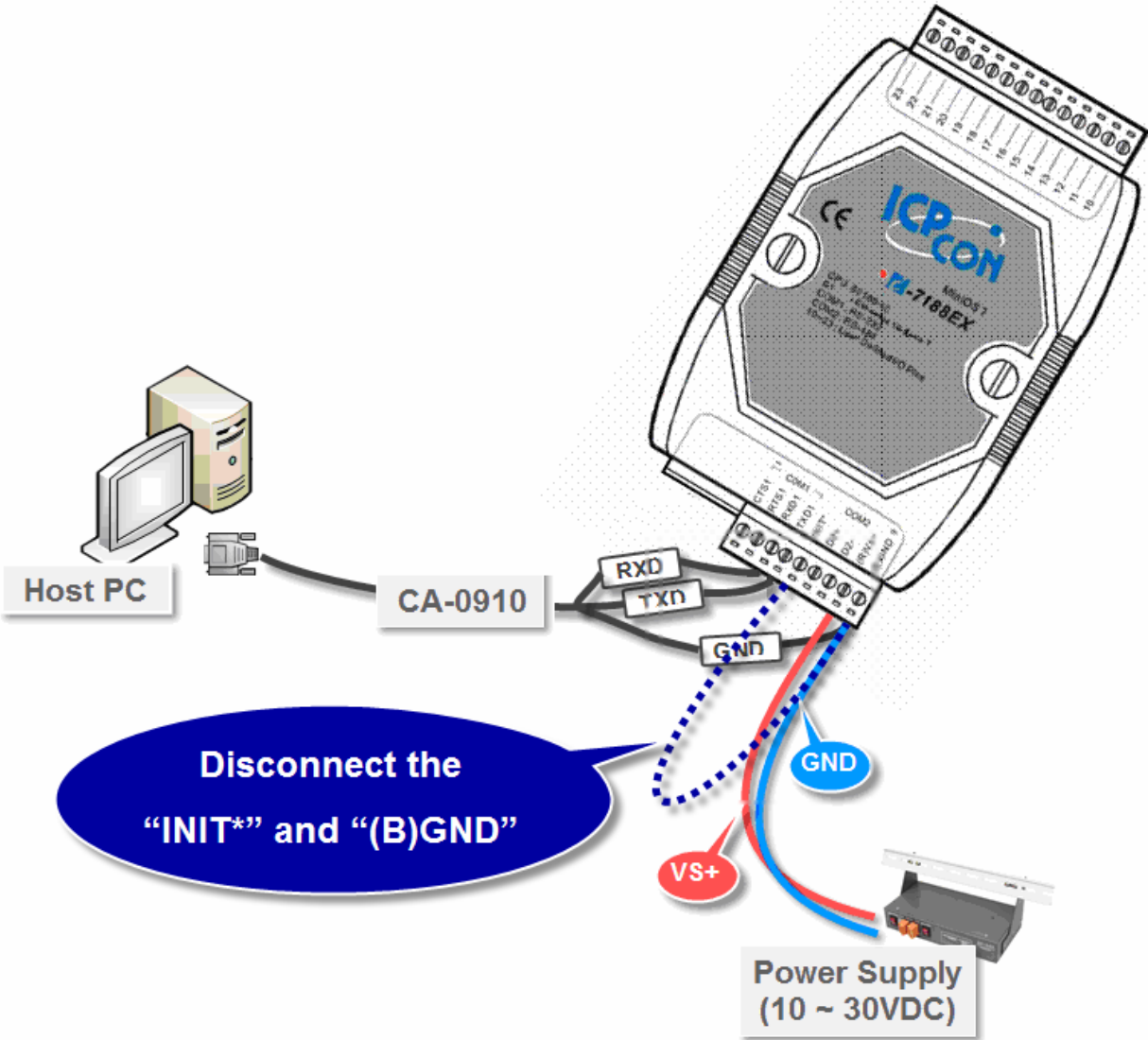
9.1 : Use CA-0910 to connect your Host PC.

9.2 : Short "INIT*" and "(B)GND"

9.3 : Power-off and then power-on

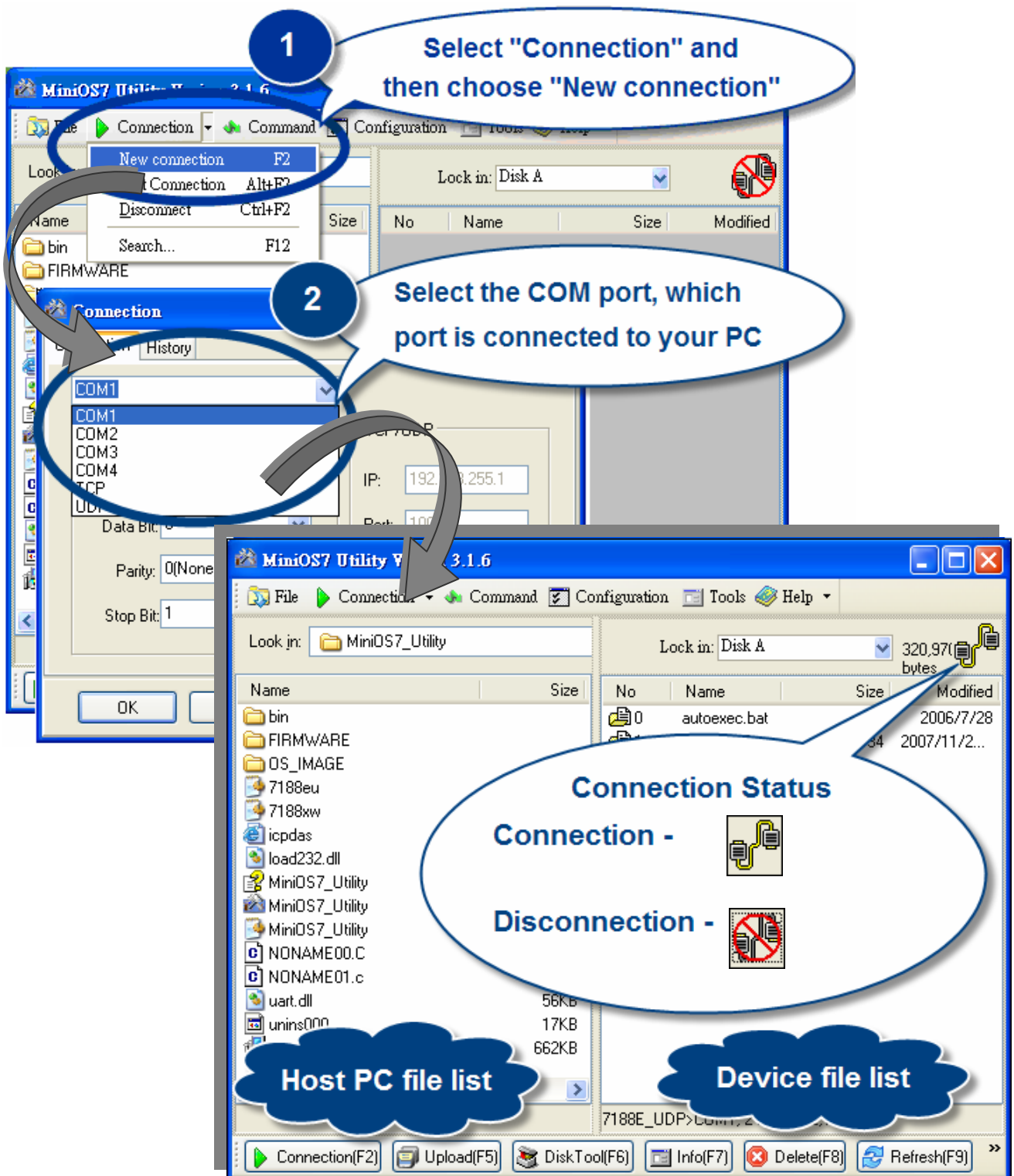


9.4 : Disconnect “INIT*” and “(B)GND”



10 Building a connection

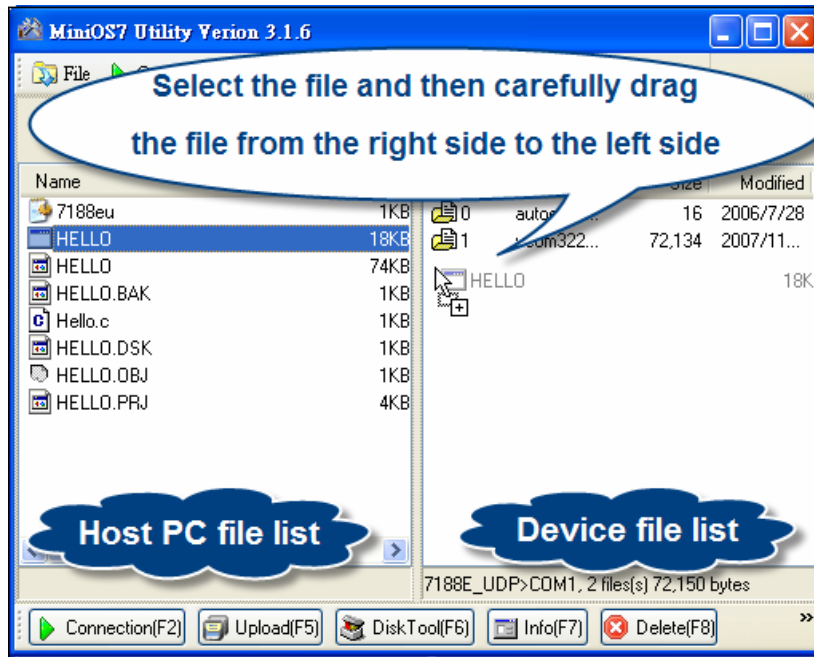
Run MiniOS7 Utility and then select the COM port, which port is connected to your Host PC.



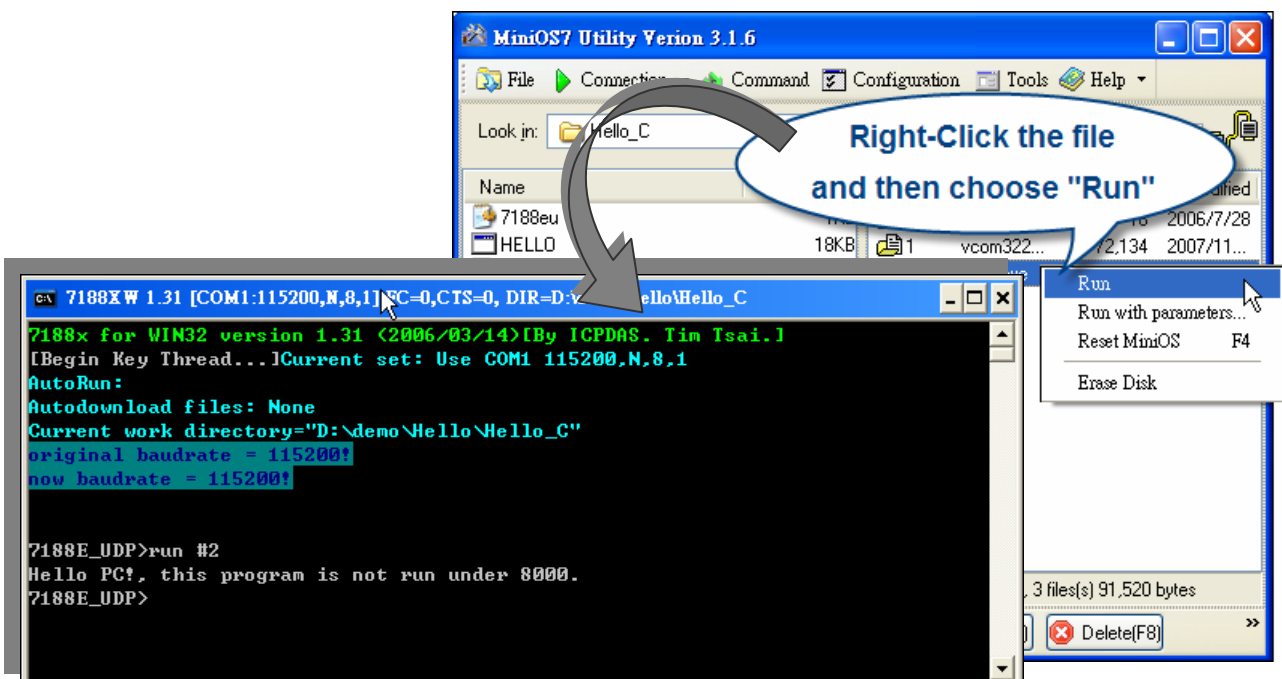
11

Downloading and executing program on your device

11.1 : Select the file which you need to download and then carefully drag the file from the right side to the left side.



12.2 : Select the file which you need to download and then carefully



Visit the ICP DAS web site

Here gives information for getting the most value from device.

- Technical support
- Supplies and ordering information
- Ways to enhance your device
- FAQ
- Application story



www.icpdas.com

Copyright @ 2007 by ICP DAS Co., Ltd. All rights are reserved.