

# I-7570

## Serial to HART Converter

### Quick Start User Guide

#### 1. Introduction

This quick start manual will guide users to implement the I-7570 module into their applications in a quick and easy way. For the more detailed information, please refer to the user's manual in the Fieldbus\_CD of ICP DAS ("CD:\hart\convert\i-7570>manual\i-7570\_usermanual.pdf") for detail.

We will use an I-7570 module (as a HART master), one HART slave and one PC as the example shown in Figure 1-1 and demonstrate how to use the I-7570 utility for I-module configuration and HART communication test.

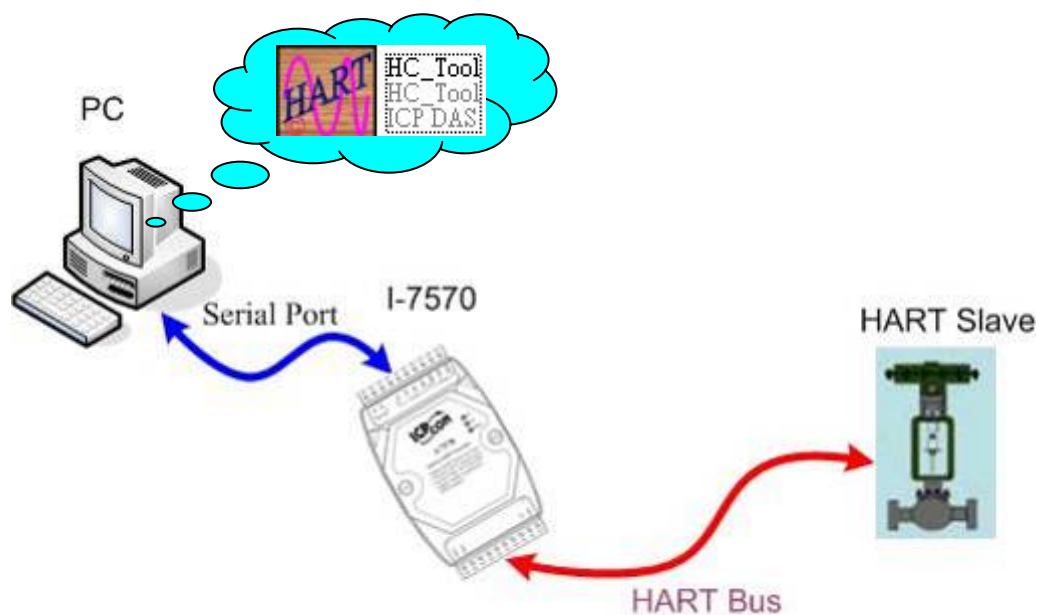


Figure 1-1: Architecture of Example

---

## 2. Hardware Installation

Users may need to make a hardware setting before the application. The detailed illustration is as below :

### [ Step1: Connect Serial port & Set FW Operation Mode ]

Connect the serial port of the I-7570 to PC and set the dip-switch on the back of I-7570 to the “Normal” position. Then turn on the I-7570 module power.

### [ Step2: Check the LED Indication I-7570 ]

Check the PWR LED of I-7570 if it is always on. If yes, it means I-7570 is working in the “Firmware Operation” mode.

<b>Mode</b> <b>LED Name</b>	Power off	FW Update	FW Operation	Serial Port Data Received	HART Port Data Received
<b>PWR LED</b>	off	flash	on	on	on
<b>TxD LED</b>	off	flash	off	flash	off
<b>RxD LED</b>	off	flash	off	off	flash

### [ Step3: Enable or Disable the Terminator Resistor ]

There is a Jumper (JP4) at the I-7570 module, shown in Figure 2-1. The jumper can provide HART network with 250  $\Omega$  (1/4 W) load resistor. When the pin 1&2 of JP4 is connected, the resistor will connect to HART network. When the pin 2&3 of JP4 is connected, it will disconnect the resistor from HART network. By default, the pin1&2 of JP4 is connected.

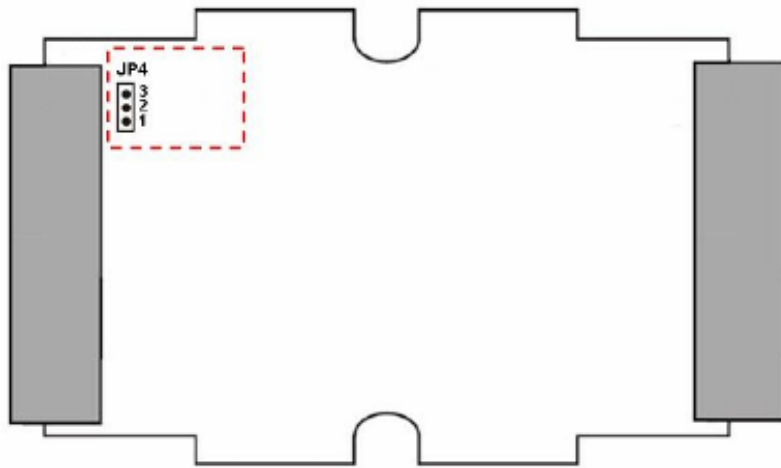


Figure 2-1: Terminator Resistor

**[ Step4: HART bus connection ]**

Connect the HART port of the I-7570 to HART Device.

---

### 3. Using I-7570 Utility

**Step1:** Turn on the power of I-7570, if the PWR LED of the I-7570 is always on, then it means the I-7570 converter is working in the “Firmware Operation” mode.

**Step2:** Run the “I-7570 Utility”, **HC\_Tool**, and click the “Settings” item like Figure 3-1 to configure the serial connection and HART command parameters.

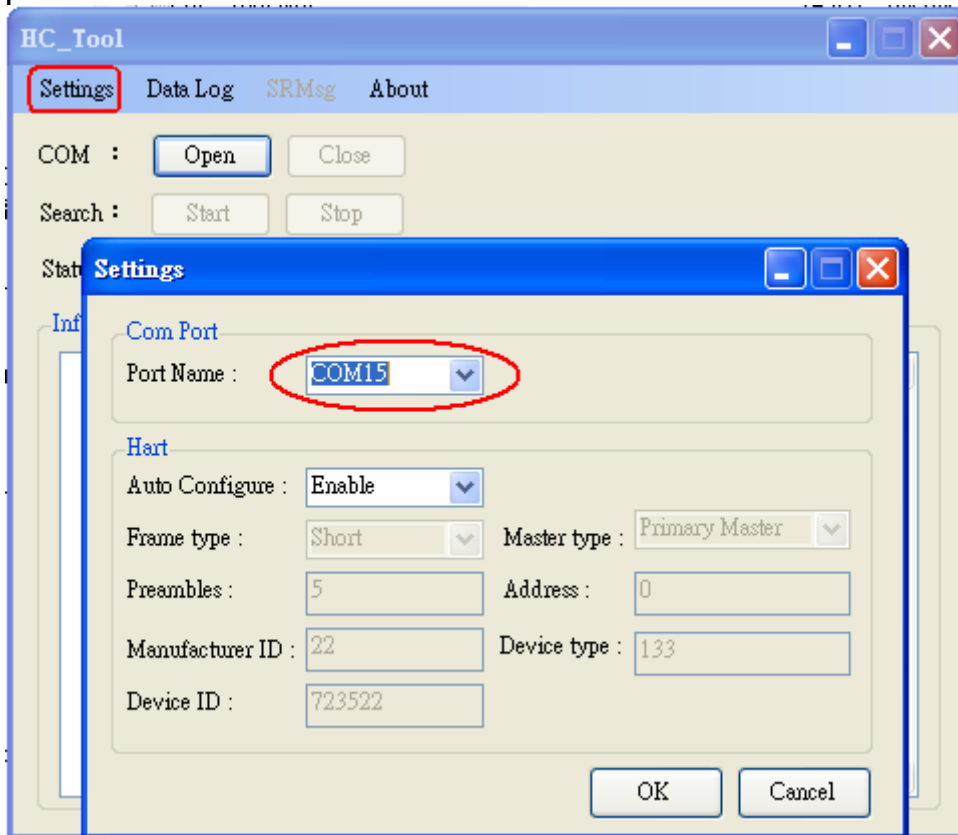


Figure 3-1: “Settings” function of HC\_Tool

**Step3:** Set the “Port Name” and “Auto Configure” parameters like Figure 3-2.

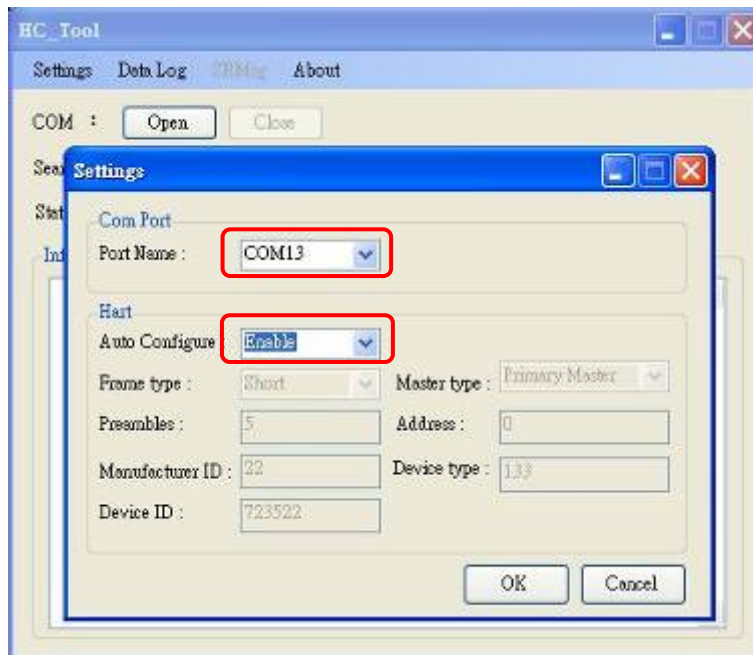


Figure 3-2: Set Com Port and HART Command Parameter

**Step4:** Click “Open” button to open the com port of PC like Figure 3-3.

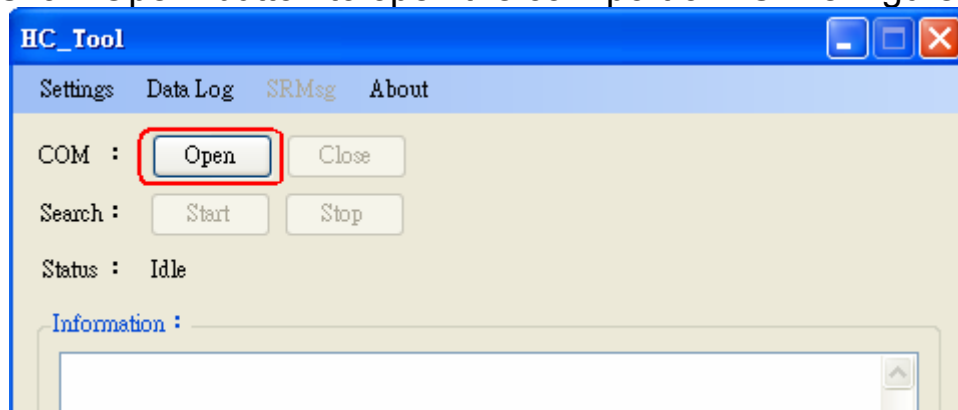


Figure 3-3: Click the “Open” button

**Step5:** Click “Start” button to search all HART devices and the result will be shown in the ”Information” field like Figure 3-4.

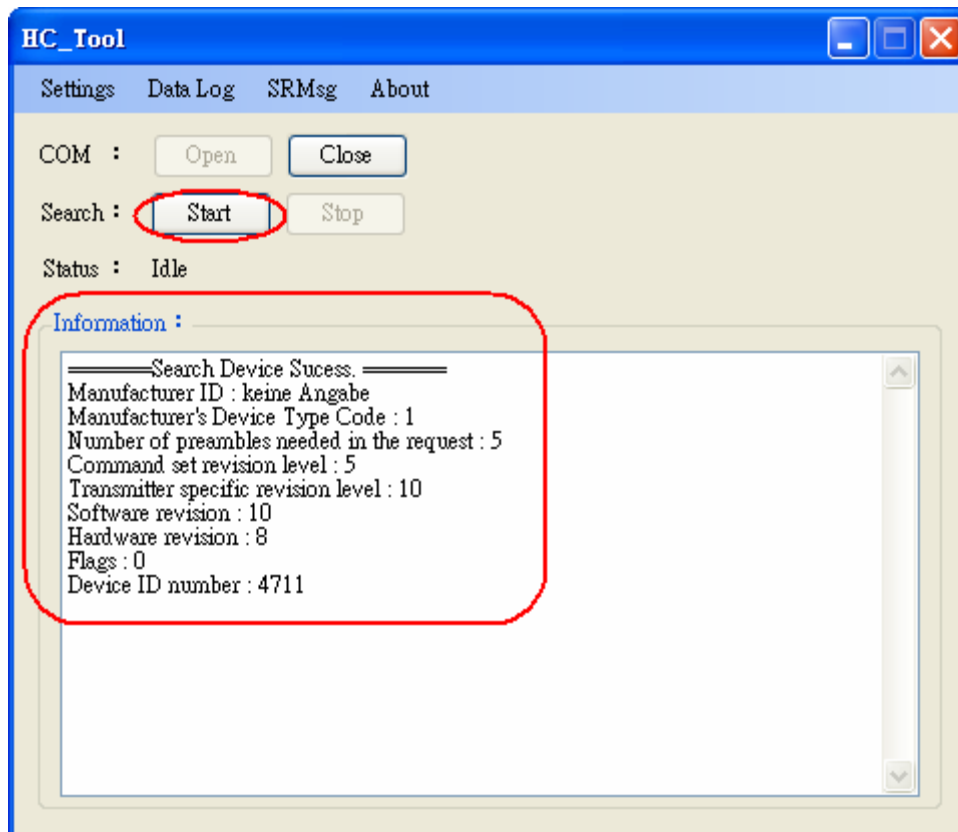


Figure 3-4: HART device Information