



I/O CARD QUICK START GUIDE

for **ISO-P64**

Language English
Version V1.2
Update Jan.2009

1

What's on your package?

- One ISO-P64 series card
- One companion ISA CD (V2.1 or later)
- One Quick Start Guide(This document)

2

Installing Windows Driver

Follow those steps:

1. Setup the Windows driver. You can get the driver from:
CD:\NAPDOS\ISA\ISO\DLL\
<http://ftp.icpdas.com/pub/cd/iocard/isa/napdos/isa/iso/dll/>
2. Click “**N**ext >” button to start installation.
3. Click “**N**ext >” button to install driver into the default folder.
4. Click “**I**nstall” button to continue installation.
5. Select “**N**O, I will restart my computer later” and click “**F**inish”.



Windows driver only support windows 98/NT/2000 and XP/2003/vista 32-bit versions.

3

I/O Base Address & Jumper Setting

- The base address is set from SW1 DIP switch on board:

SW1: Base Address



* Default Base Address: 0x200

Address	1	2	3	4	5	6
*0x200	ON	ON	ON	ON	ON	ON
0x208	ON	ON	ON	ON	ON	OFF
0x210	ON	ON	ON	ON	OFF	ON
0x218	ON	ON	ON	ON	OFF	OFF
0x220	ON	ON	ON	OFF	ON	ON
:	:	:	:	:	:	:
0x300	OFF	ON	ON	ON	ON	ON
0x308	OFF	ON	ON	ON	ON	OFF
0x310	OFF	ON	ON	ON	OFF	ON
:	:	:	:	:	:	:

- Jumper Setting

JP1/JP2/JP3/JP4 jumper setting

<p>A diagram showing a 2x2 grid of four pins. The top-left and top-right pins are connected by a horizontal jumper. The bottom-left and bottom-right pins are unconnected.</p>	Internal Power	
<p>A diagram showing a 2x2 grid of four pins. The top-left and top-right pins are unconnected. The bottom-left and bottom-right pins are connected by a horizontal jumper.</p>	External Power	Default Setting

The detail Jumper Setting information. Please refer to :

CD:\NAPDOS\ISA\ISO\MANUAL\ISO-P32C32_P32S32W_P64_C64_MANUAL.PDF

http://ftp.icpdas.com/pub/cd/iocard/isa/napdos/isa/iso/manual/iso-p32c32_p32s32w_p64_c64_manual.pdf

4

Installing Hardware on PC

Follow those steps:

1. Shut down and power off your computer
2. Remove all covers from the computer
3. Select an empty ISA slot
4. Carefully insert your I/O card into the ISA slot
5. Replace the PC covers
6. Power on the computer

After powering-on the computer, continue next process.

5

Adding Hardware



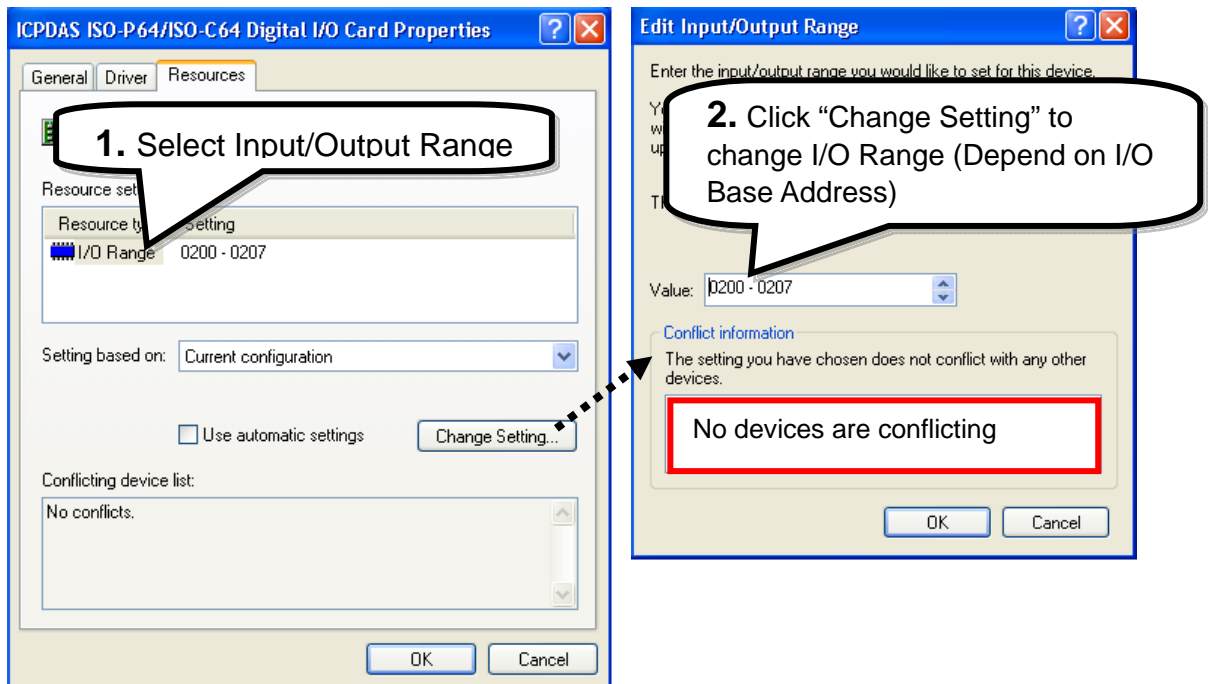
Adding hardware is used on Windows 2000/XP/2003/Vista 32 only. Windows 9X/Me/NT users can skip it.

7. Add Hardware

- 7-1 Open the **“Control Panel”** by click the item **“Start / Settings / Control Panel”**.
- 7-2 Double-click the item **“Add/Remove Hardware”** and Click the **“Next >”** button.
- 7-3 Select the item **“Add/Troubleshoot a device”** and click the **“Next >”** button.
- 7-4 Select the item **“Add a new device”** and click the **“Next >”** button.

- 7-5 Select the item **“No, I want to select the hardware from a list”** and click the **“Next >”** button.
- 7-6 Select the item **“Other device”** and click the **“Next >”** button.
- 7-7 Click the **“Have Disk...”** button.
- 7-8 Click the **“Browse...”** button to select the **Inf** file default path is C:\DAQPRO\ISO_Win2K\Inf and click the **“OK”** button.
- 7-9 Select the correct device from the **“Models:”** listbox and Click the **“Next >”** button.
- 7-10 The windows show to dialog box and Click the **“OK”** button to enter the device’s properties settings.

8. Modify the device properties



9. Reboot the PC

The detail “add hardware” information. Please refer to:

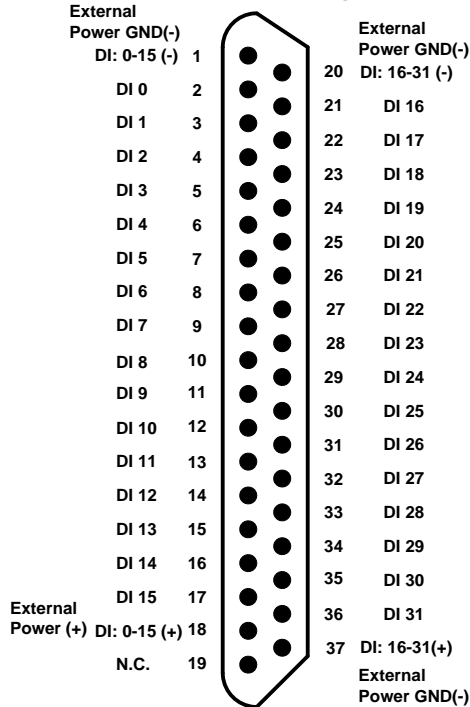
CD:\NAPDOS\ISA\Manual\PCI_ISA_PnP_Driver_Installation_in_Win9x_2K_XP.pdf

http://ftp.icpdas.com/pub/cd/iocard/isa/napdos/isa/manual/pci_isa_pnp_driver_installation_in_win9x_2k_xp.pdf

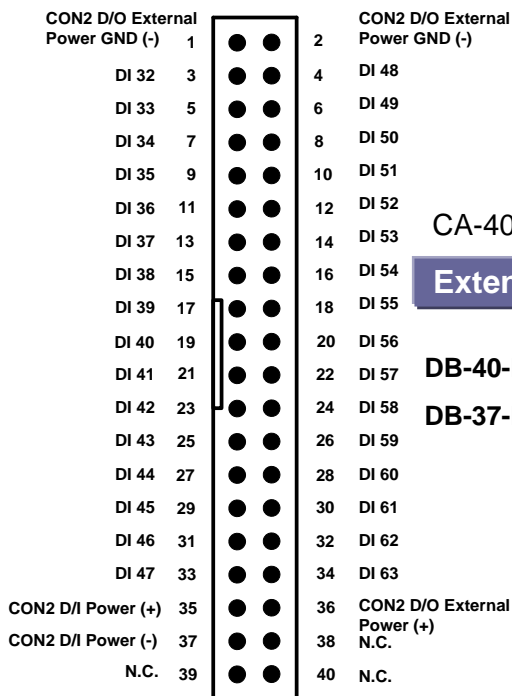
6

Pin Assignments

CON1: Pin assignment



CON2: Pin assignment



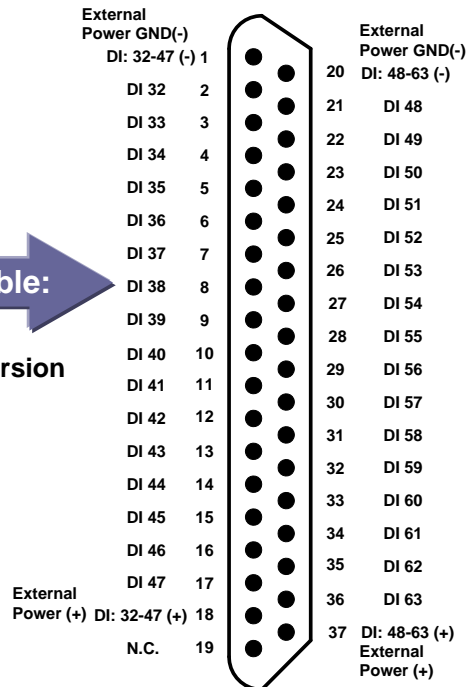
CA-4037W

Extension cable:

DB-40-Pin conversion

DB-37-Pin

CON2: Pin assignment



The detail pin assignments information. Please refer to :

CD:\NAPDOSISA\ISO\Manual\ISO-P32C32_P32S32W_P64_C64_manual.pdf

http://ftp.icpdas.com/pub/cd/iocard/isa/napdos/isa/iso/manual/iso-p32c32_p32s32w_p64_c64_manual.pdf

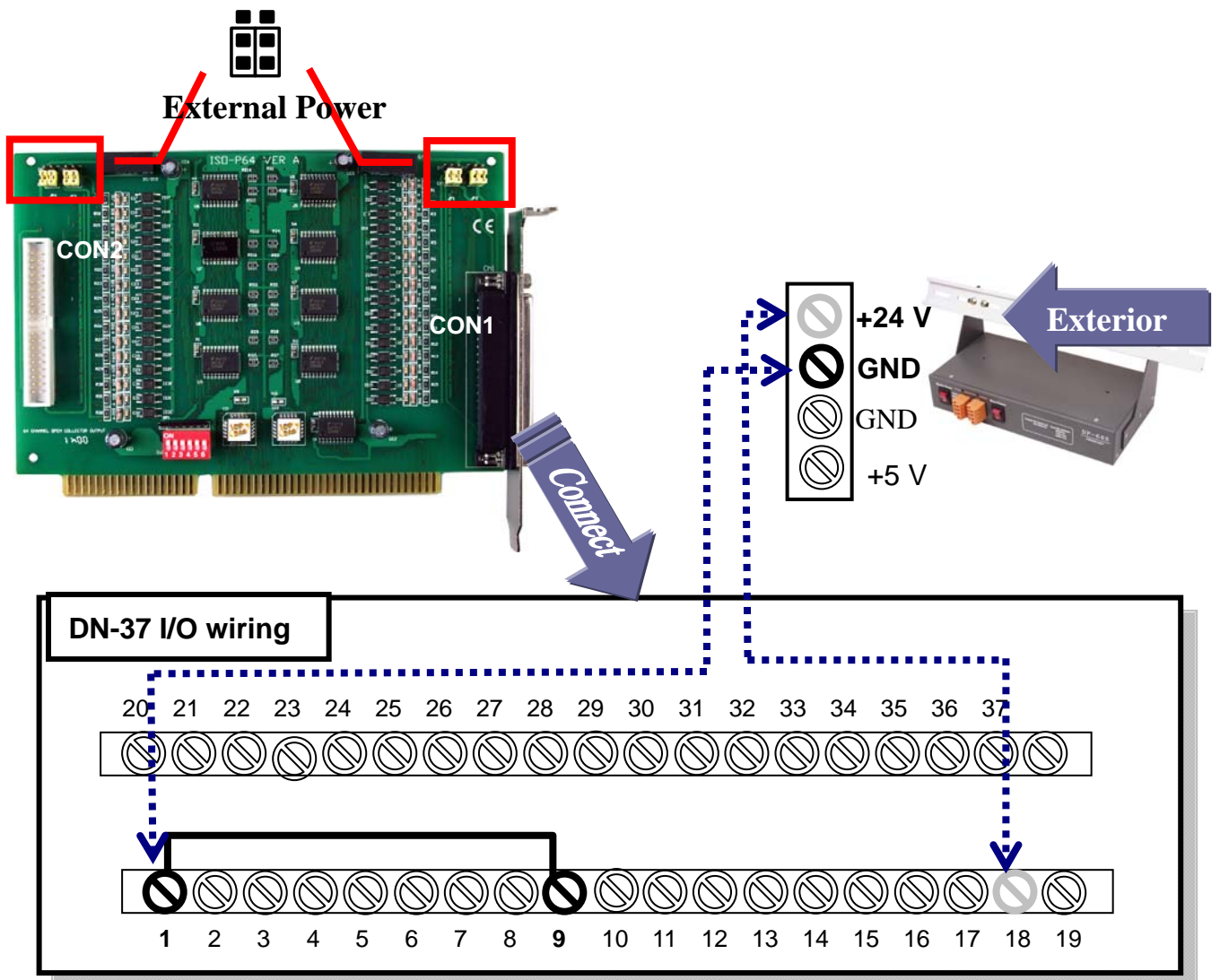
7

Self-Test

1. Setting JP1, JP2, JP3, JP4 to External Power.
2. Use DN-37 to connect the board CON1.
3. External +24 V connect to External power(+) and external GND connect to External power(-).

(External +24 V connect to Pin18 and External GND connect to Pin1)

4. Connect the GND(-) with DI7.(Pin1 connect to Pin9)



5. Run the ISO-P64 sample program.

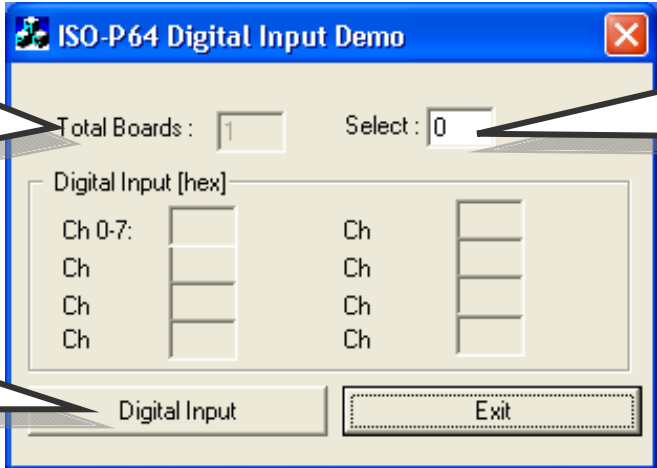
Get the file from(Default):C:\DAQPro\ISO_WinXXX\Demo\

6. Check number of the ISO-P64, and test DI function.

1. The one ISO-P64 had successfully installed to PC.

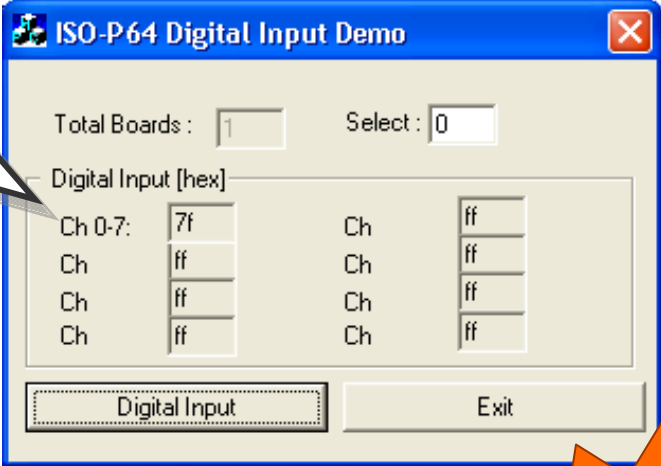
2. Select the board number for the ISO-P64. It starts from 0.

3. Click this button to do DI test.



7. Get DI function test result.

4. There is wiring channel show to High state (&h7F) and no wiring channel show to Low state (&hFF).



Complete

8

Additional Information

✓ **ISO-P64 Series Card Product page:**

http://www.icpdas.com/products/DAQ/pc_based/iso_p64.htm

✓ **DN-37(Optional) page:**

http://www.icpdas.com/products/DAQ/screw_terminal/dn_37.htm

✓ **DP-665(Optional) page:**

http://www.icpdas.com/products/Accessories/power_supply/dp-665.htm

✓ **Documents:**

CD:\NAPDOS\ISA\ISO>manual

<http://ftp.icpdas.com/pub/cd/iocard/isa/napdos/isa/iso/manual/>

✓ **Software:**

CD:\NAPDOS\ISA\ISO

<http://www.icpdas.com/download/isa/iso/index.htm>

The ICP DAS Web Site

<http://www.icpdas.com>



Contact Us

Service@icpdas.com

- Technical support
- Supplies and ordering information
- Ways to enhance your device
- FAQ
- Application story

Copyright ©2008 by ICP DAS Co., Ltd. All right are reserved