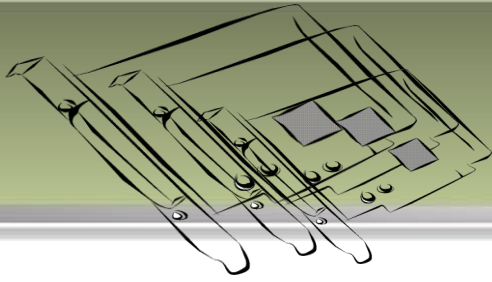


I/O CARD QUICK START GUIDE

For PCI-TMC12A

English/ Jun. 2013/ Version 1.2



1

What's in the shipping package?

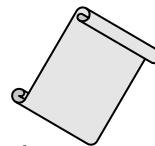
The package includes the following items:



PCI-TMC12A



Software Utility CD
(V5.2 or later)



Quick Start Guide
(This Document)



CA-4002
D-Sub Connector

2

Installing Windows Driver

Step 1: Setup the Windows driver. The driver is located at:

- The UniDAQ driver supports 32-/64-bit Windows 2K/XP/2003/Vista/7/8; it is recommended to install this driver for new user:
CD: \NAPDOS\PCI\UniDAQ\DLL\Driver
<http://ftp.icpdas.com/pub/cd/iocard/pci/napdos/pci/unidaq/dll/driver/>
- The PCI-TMC12 series classic driver supports Windows 98/NT/2K and 32-bit XP/ 2003/ Vista/7/8. Recommended to install this driver for have been used PCI-TMC12 series boards of regular user, please refer to :
<http://ftp.icpdas.com/pub/cd/iocard/pci/napdos/pci/pci-tmc12a/manual/quickstart/classic/>

Step 2: Click the "**N**ext>" button to start the installation.

Step 3: Check your DAQ Card is or not on supported list, then click the "**N**ext>" button.

Step 4: Select the installed folder, the default path is C:\ICPDAS\UniDAQ , confirm and click the "**N**ext>" button.

Step 5: Check your DAQ Card on list, then click the "**N**ext>" button.

Step 6: Click the "**N**ext>" button on the **Select Additional Tasks** window.

Step 7: Click the "**N**ext>" button on the **Download Information** window.

Step 8: Select "**No, I will restart my computer later**" and then click the "**F**inish" button.

For detailed information about the driver installation, please refer to Chapter 2.1 "Getting the UniDAQ Driver DLL Installer package" of the UniDAQ SDK user manual.

3 Installing Hardware on PC

Step 1: Shut down and power off your computer.

Step 2: Remove the cover from the computer.

Step 3: Select an unused PCI slot.

Step 4: Carefully insert your I/O card into the PCI slot.

Step 5: Replace the PC cover.


Step 6: Power on the computer.

After powering-on the computer, please finish the Plug&Play steps according to the prompted messages.

4 Pin Assignments


- **CON1 Timer/Counter connector** (Female DB37)
- **CON2 and Digital Input/Output connector** (20-pin box header)

Pin Assignment	Terminal No.	Pin Assignment
ECLK1	01	20 EXTG1
COUT1	02	21 ECLK2
EXTG2	03	22 COUT2
ECLK3	04	23 EXTG3
COUT3	05	24 ECLK4
EXTG4	06	25 COUT4
ECLK5	07	26 EXTG5
COUT5	08	27 ECLK6
EXTG6	09	28 COUT6
ECLK7	10	29 EXTG7
COUT7	11	30 ECLK8
EXTG8	12	31 COUT8
ECLK9	13	32 EXTG9
COUT9	14	33 ECLK10
EXTG10	15	34 COUT10
ECLK11	16	35 EXTG11
COUT11	17	36 ECLK12
EXTG12	18	37 COUT12
GND	19	



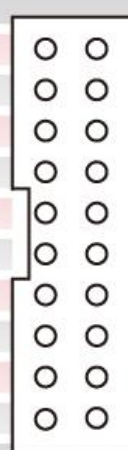
CON1

Pin Assignment	Terminal No.	Pin Assignment
DI 0	01	02 DI 1
DI 2	03	04 DI 3
DI 4	05	06 DI 5
DI 6	07	08 DI 7
DI 8	09	10 DI 9
DI 10	11	12 DI 11
DI 12	13	14 DI 13
DI 14	15	16 DI 15
GND	17	18 GND
+5V	19	20 +12V



CON2

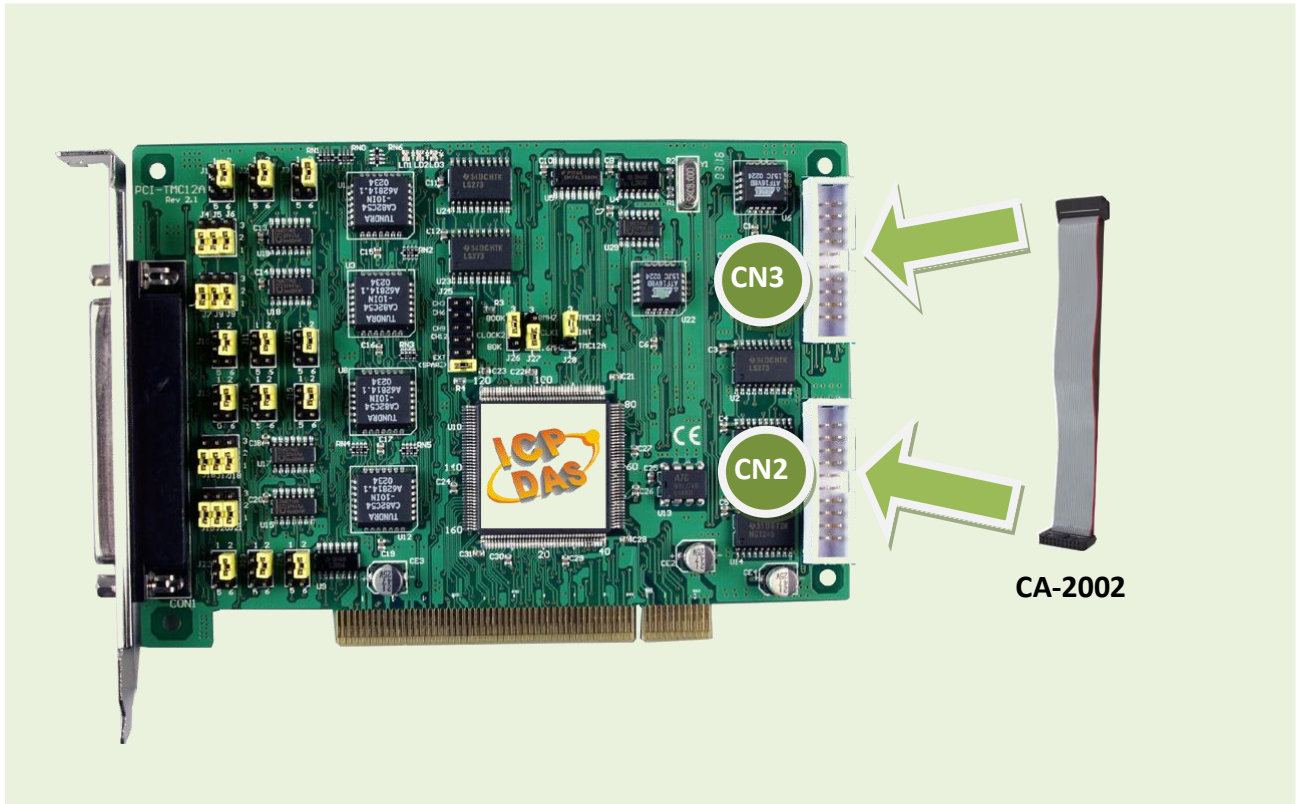
Pin Assignment	Terminal No.	Pin Assignment
DO 0	01	02 DO 1
DO 2	03	04 DO 3
DO 4	05	06 DO 5
DO 6	07	08 DO 7
DO 8	09	10 DO 9
DO 10	10	12 DO 11
DO 12	12	14 DO 13
DO 14	14	16 DO 15
GND	16	18 GND
+5V	18	20 +12V



CON3

5 Self-Test

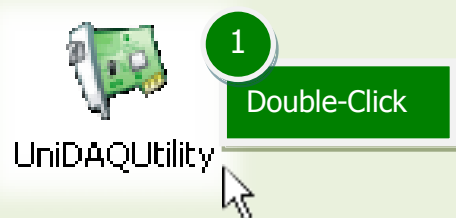
1. Use CA-2002 (optional) to connect the CON2 with CON3.



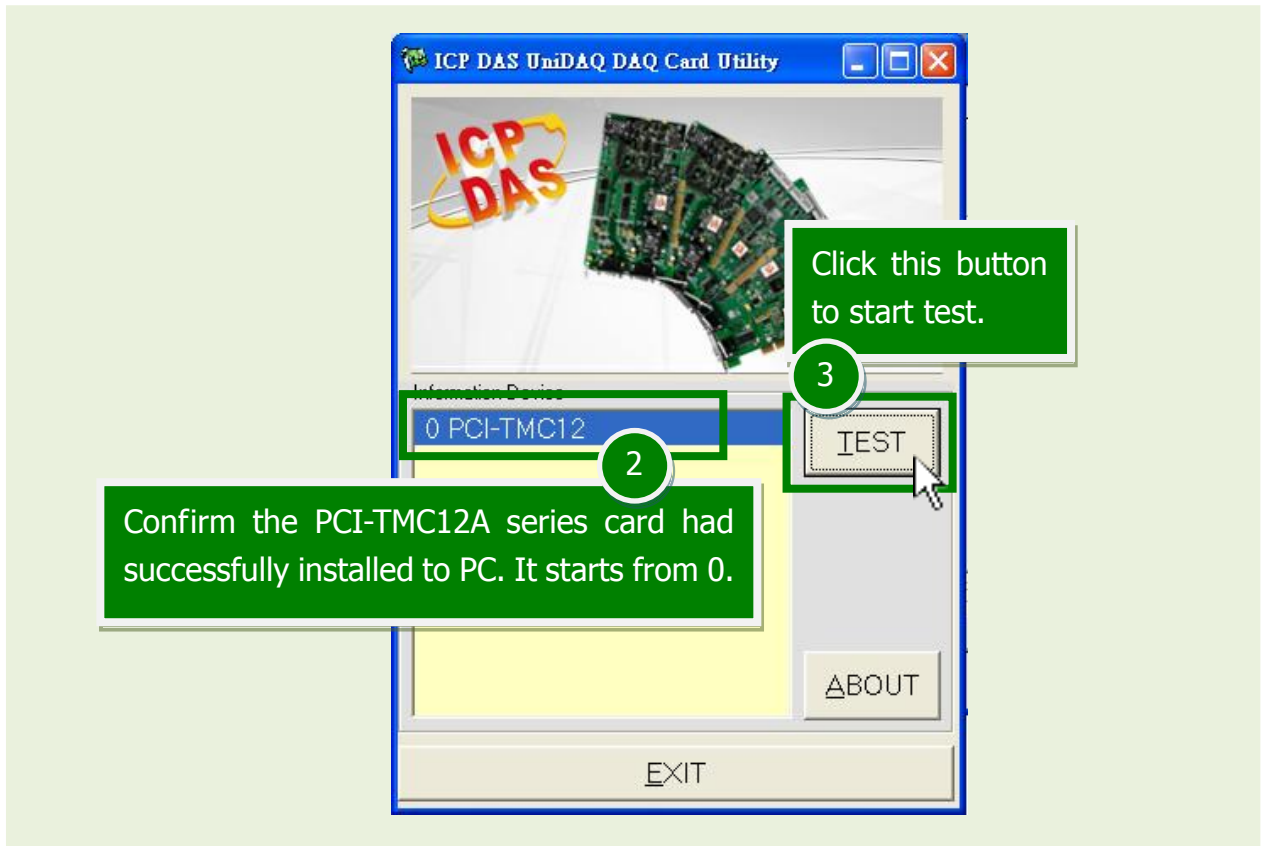
2. The UniDAQ Utility.exe is located in:

This program (UniDAQ Utility) will be placed in the default path after completing installation.

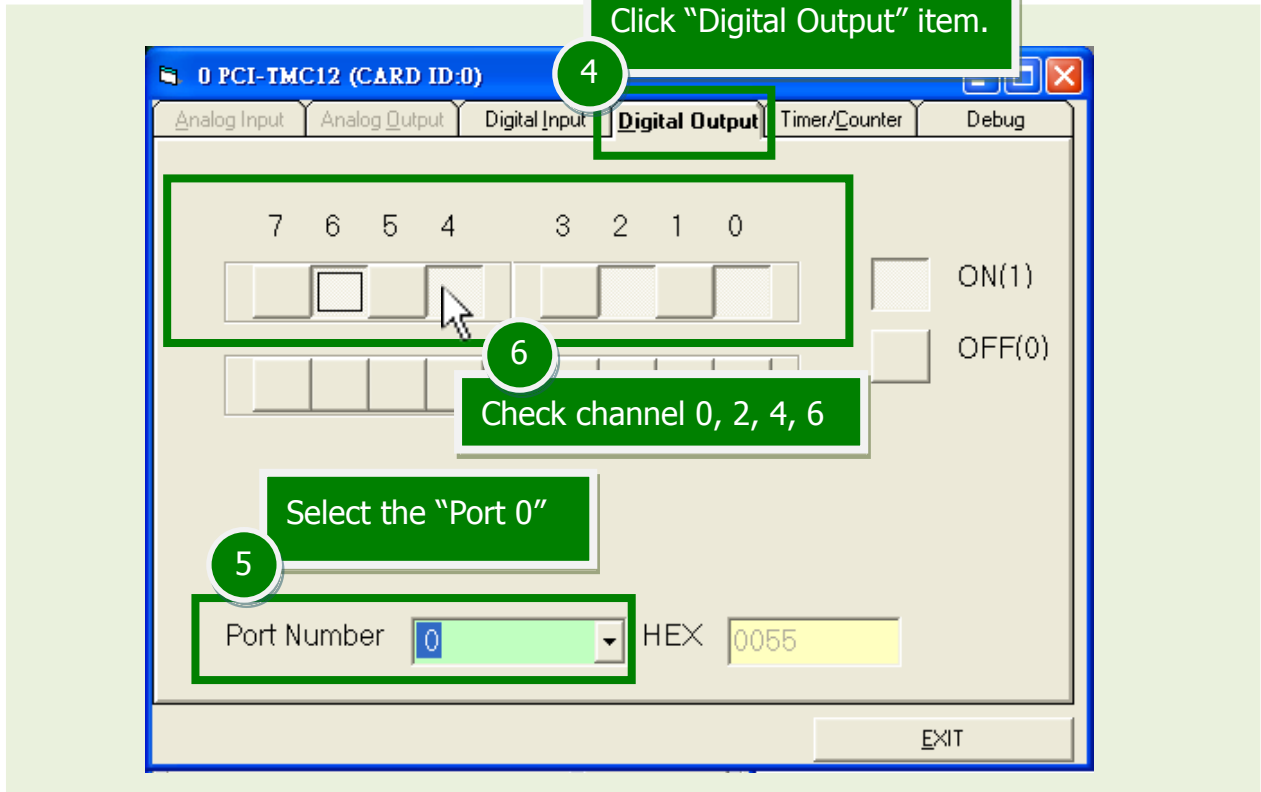
Default Path: C:\ICPDAS\UniDAQ\Driver\
Double click the "UniDAQUtility.exe"

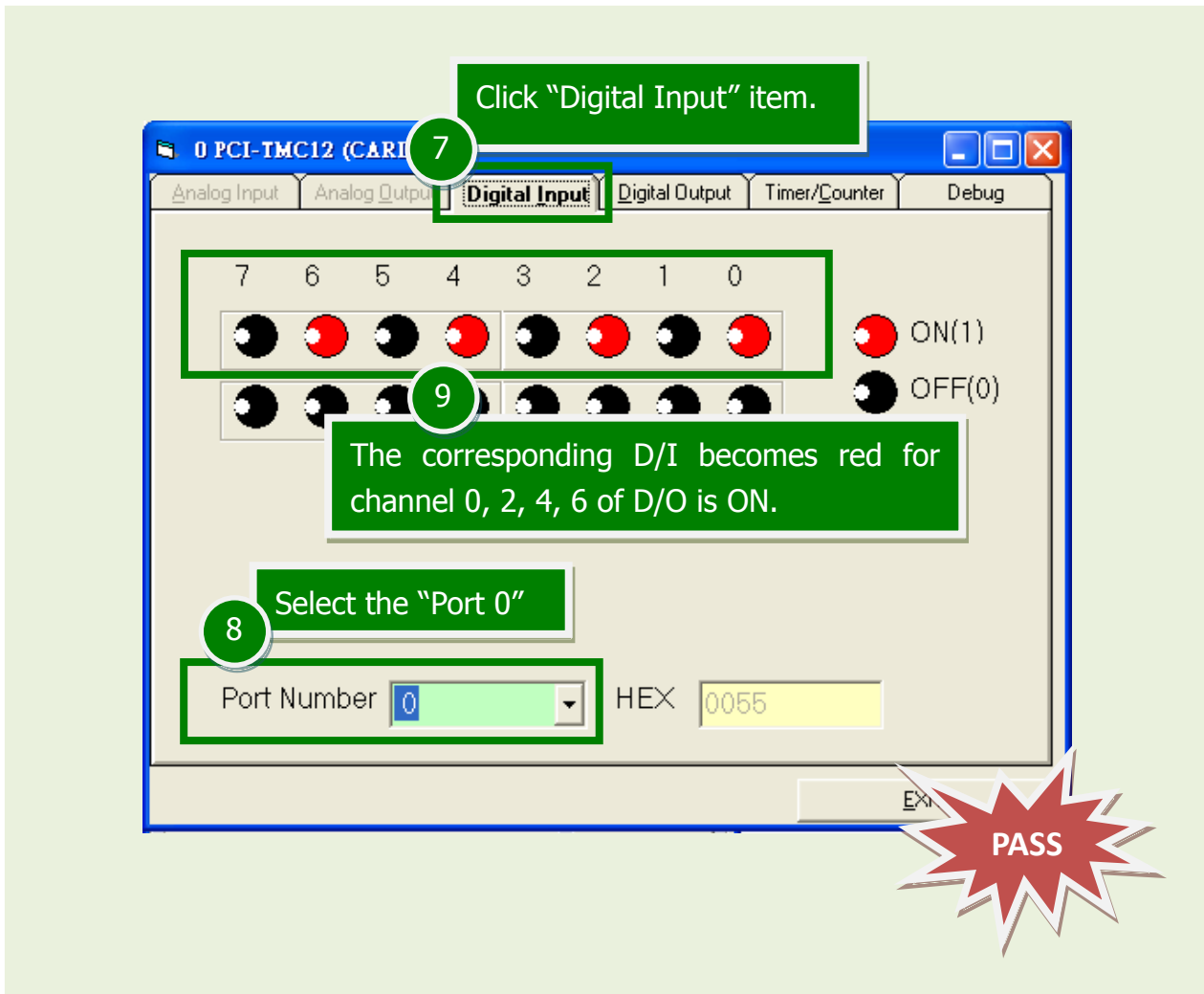


3. Execute the UniDAQ Utility Program.



4. Get DIO function test result.





6 Related Information

- PCI-TMC12A series card product page:
http://www.icpdas.com/root/product/solutions/pc_based_io_board/pci/pci-tmc12a.html
- CA-2002 page (optional):
http://www.icpdas.com/products/Accessories/cable/cable_selection.htm
- Documentation and Software:
CD:\NAPDOS\PCI\UniDAQ\
<http://ftp.icpdas.com/pub/cd/iocard/pci/napdos/pci/unidaq/>