

Quick Start

for PCI-TMC12AU

English/ Dec. 2016/ Version 1.0

1 Shipping Package

The package includes the following items:

- ❶ PCI-TMC12AU Card x1 ❷ Quick Start x1 ❸ Software CD x1 ❹ CA-4002 D-Sub Connectorx1



2 Installing windows Driver

- ❶ Setup the Windows driver, which can be obtained from either the companion CD-ROM or the ICP DAS web site:

The UniDAQ driver supports 32-/64-bit Windows XP/2003/7/8/10; it is recommended to install this driver for new user.



CD: \NAPDOS\PCI\UniDAQ\DLL\Driver

<http://ftp.icpdas.com/pub/cd/iocard/pci/napdos/pci/unidaq/dll/driver/>

The PCI-TMC12 series classic driver supports Windows 98/NT/2K and 32-bit XP/2003/7/8/10. Recommended to install this driver for have been used PCI-TMC12 series



boards of regular user, please refer to :

<http://ftp.icpdas.com/pub/cd/iocard/pci/napdos/pci/pci-tmc12a/manual/quickstart/classic/>

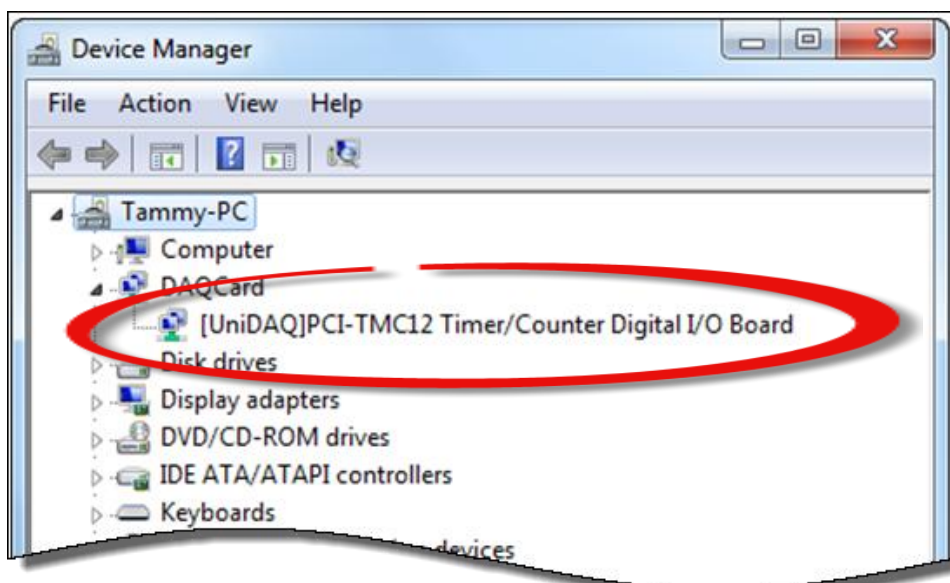
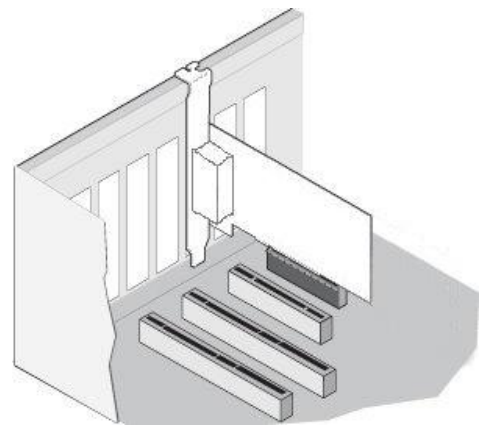
- ② Click the “**Next>**” button to start the installation.
- ③ Check your DAQ Card is or not on supported list, then click the “**Next>**” button.
- ④ Select the installed folder, the default path is **C:\ICPDAS\UniDAQ** , confirm and click the “**Next>**” button.
- ⑤ Check your DAQ Card on list, then click the “**Next>**” button.
- ⑥ Click the “**Next>**” button on the Select Additional Tasks window.
- ⑦ Click the “**Next>**” button on the Download Information window.
- ⑧ Select “**No, I will restart my computer later**” and then click the “**Finish**” button.

For more detailed information about how to install the UniDAQ driver, refer to “**Section 2.2 Install UniDAQ Driver DLL**” of the UniDAQ Software Manual.

3

Installing Hardware on PC


- ① Shut down and power off your computer.
- ② Remove the cover from the computer.
- ③ Select an unused PCI slot.
- ④ Carefully insert your I/O card into the PCI slot.
- ⑤ Replace the PC cover.
- ⑥ Power on the computer.
- ⑦ Follow the prompt message to finish the Plug & Play steps.
- ⑧ Please open the “**Device Manager**” to verify the I/O card is correctly listed in the Device Manager.



4


Pin Assignments

Pin Assignment	Terminal No.	Pin Assignment
ECLK1	01	20 EXTG1
COUT1	02	21 ECLK2
EXTG2	03	22 COUT2
ECLK3	04	23 EXTG3
COUT3	05	24 ECLK4
EXTG4	06	25 COUT4
ECLK5	07	26 EXTG5
COUT5	08	27 ECLK6
EXTG6	09	28 COUT6
ECLK7	10	29 EXTG7
COUT7	11	30 ECLK8
EXTG8	12	31 COUT8
ECLK9	13	32 EXTG9
COUT9	14	33 ECLK10
EXTG10	15	34 COUT10
ECLK11	16	35 EXTG11
COUT11	17	36 ECLK12
EXTG12	18	37 COUT12
GND	19	




CON1

Pin Assignment	Terminal No.	Pin Assignment
DI 0	01	02 DI 1
DI 2	03	04 DI 3
DI 4	05	06 DI 5
DI 6	07	08 DI 7
DI 8	09	10 DI 9
DI 10	11	12 DI 11
DI 12	13	14 DI 13
DI 14	15	16 DI 15
GND	17	18 GND
+5 V	19	20 +12 V



CON2

Pin Assignment	Terminal No.	Pin Assignment
DO 0	01	02 DO 1
DO 2	03	04 DO 3
DO 4	05	06 DO 5
DO 6	07	08 DO 7
DO 8	09	10 DO 9
DO 10	10	12 DO 11
DO 12	12	14 DO 13
DO 14	14	16 DO 15
GND	16	18 GND
+5 V	18	20 +12 V



CON3

Notes:

1. **ECLKn**: External clock source for Counter n
2. **EXTGn**: External gate control signal for Counter n
3. **COUTn**: Output of Timer/Counter n
4. All signals are TTL compatible

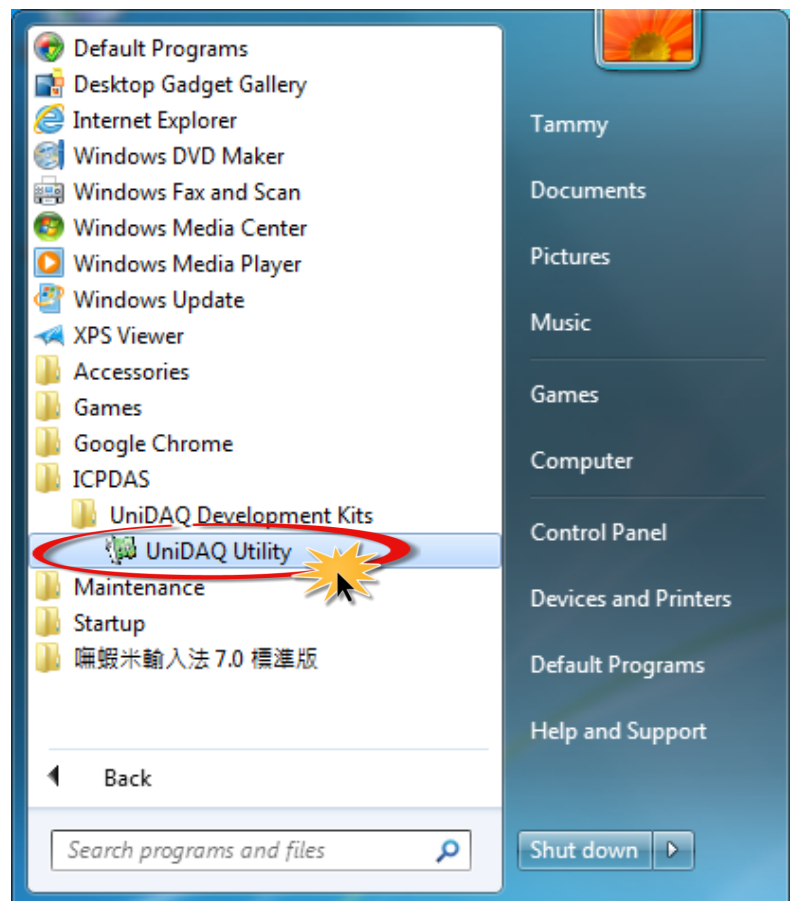
5

Self-Test

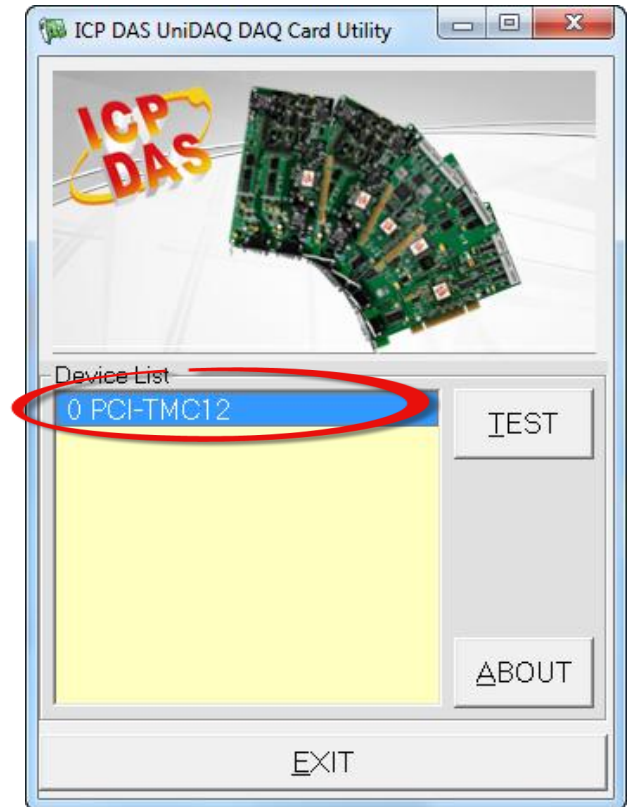
- 1 Use CA-2002 (optional) to connect the CON2 with CON3.



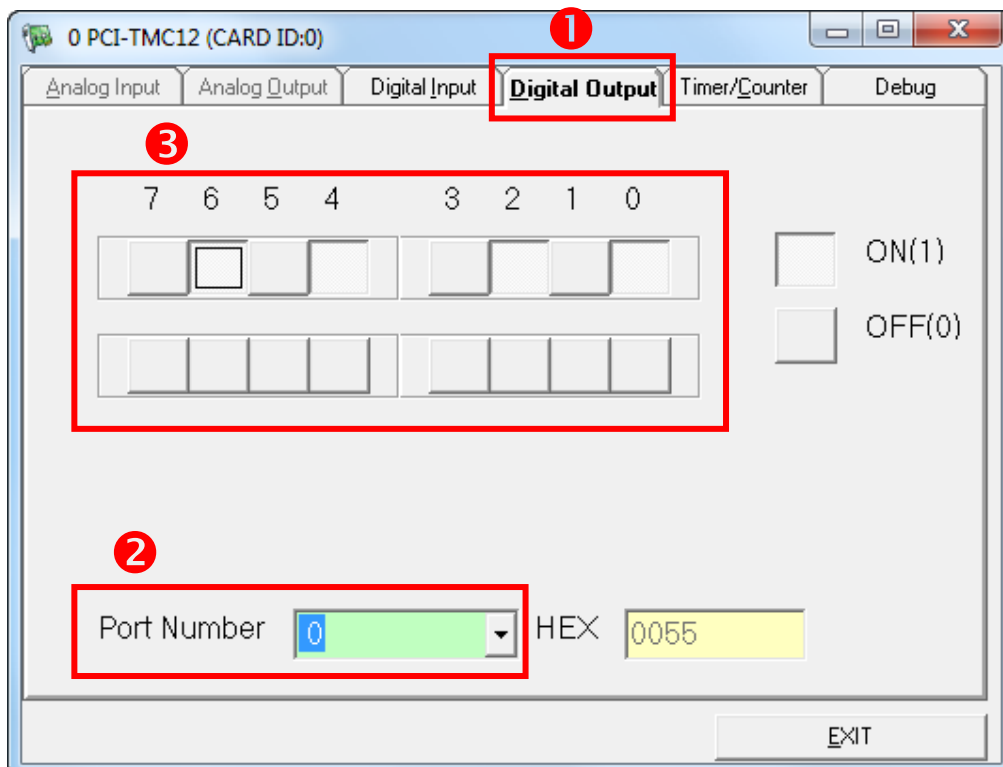
- 2 In Windows 7, click the “Start” button, point to “All Programs”, and then click the “ICPDAS” folder. Point to “UniDAQ Development Kits” and then click the “UniDAQ Utility” to execute the UniDAQ Utility Program.



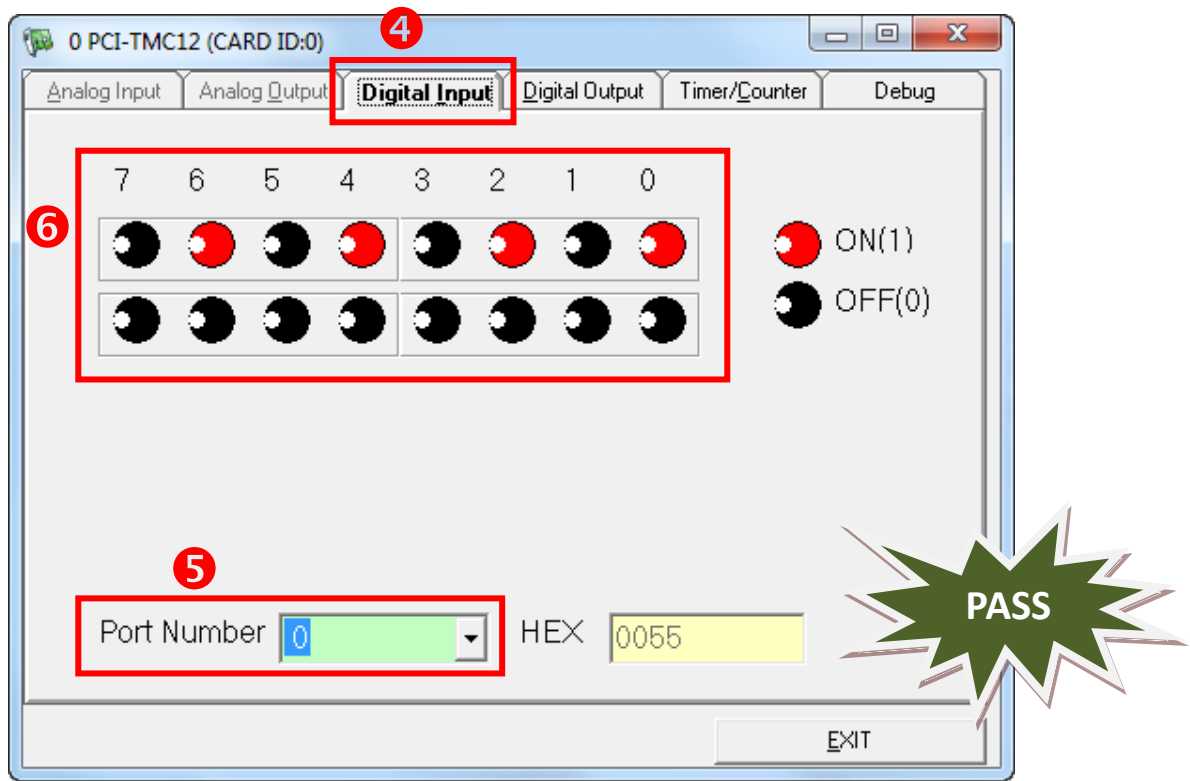
- ③ Confirm that PCI-TMC12AU has been successfully installed in the host system. Note that the device numbers start from 0.
- ④ Click the “**TEST**” button to start the test.



- ⑤ Check the results of the **Digital Input/Output** functions test.
 1. Click the “**Digital Output**” tab.
 2. Select “**Port0**” from the “**Port Number**” drop-down menu.
 3. Check the checkboxes for **channels 0, 2, 4 and 6**.



1. Click the “Digital Input” tab.
2. Select “Port0” from the “Port Number” drop-down menu.
3. The DI indicators will turn red when the corresponding DO channels 0, 2, 4 and 6 are ON.



6

Related Information

- PCI-TMC12AU series card product page:

http://www.icpdas.com/root/product/solutions/pc_based_io_board/pci/pci-tmc12a.html

- CA-2002 page (optional):

http://www.icpdas.com/products/Accessories/cable/cable_selection.htm

- Documentation and Software:

CD:\NAPDOS\PCI\UniDAQ\

<http://ftp.icpdas.com/pub/cd/iocard/pci/napdos/pci/unidaq/>