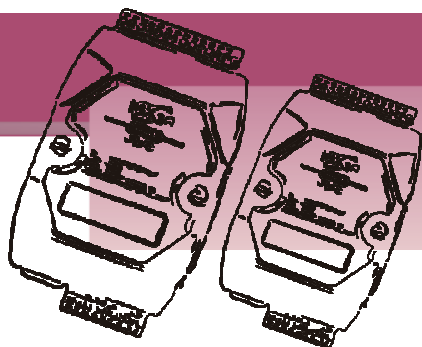


PDS SERIES QUICK START GUIDE



For PDS-220Fx Series

English/ Aug 2010/ Version 1.0

1 What's in the shipping package?

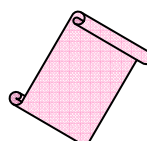
The package includes the following items:



**PDS-220Fx
Series**



**Software
CD**



**Quick Start Guide
(This Document)**

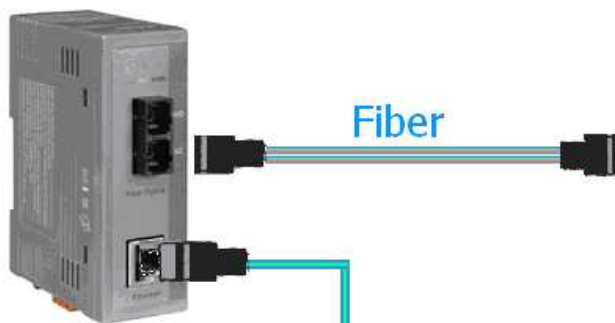
2 Preparations for devices

1. Power Supply: +10 ~ +48 V_{DC} (Ex, DP-665, optional)
2. Ethernet to Fiber Optic converter. (Ex, NS-200F series, optional)
3. Ethernet Hub. (Ex, NS-205, optional)
4. Make sure your PC has workable network settings.
5. Disable or well configure your Windows firewall and Anti-Virus firewall first, else the "Search Servers" on page 3 may not work. (Please contact with your system Administrator)

3 Connecting the Power and Host PC

1. Connect both the PDS-220Fx via the Fiber Optic converter and your computer to the same sub network or the same Ethernet Switch.
2. Wire "RXD" and "TXD" of the COM2 on the PDS-220Fx as below (for test).

Ethernet to Fiber optic converter (NS-220AFx)

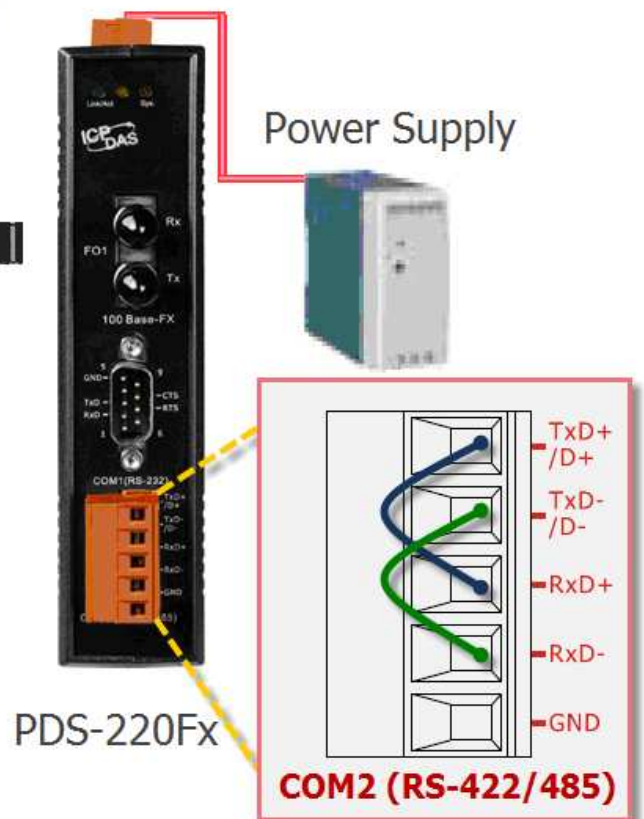
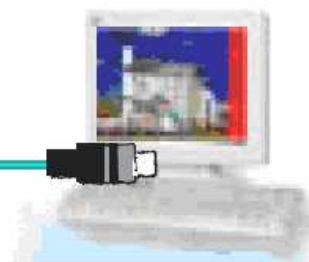


Ethernet Hub (NS-208)



PC + VxComm

Ethernet

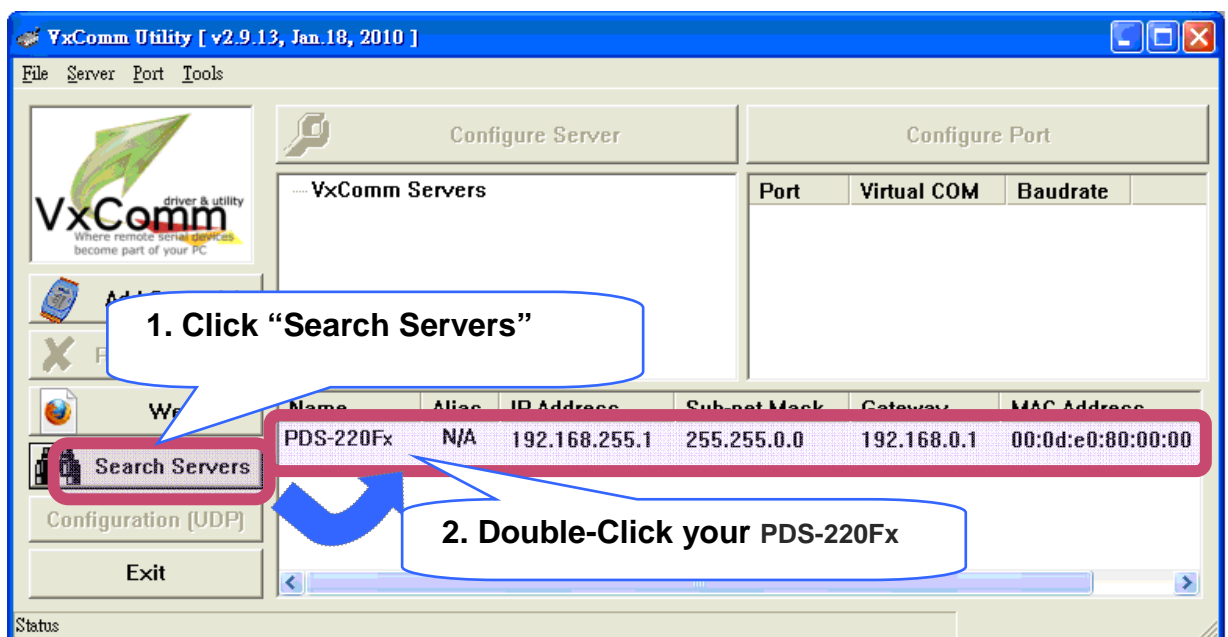


4 Installing VxComm Utility on your PC

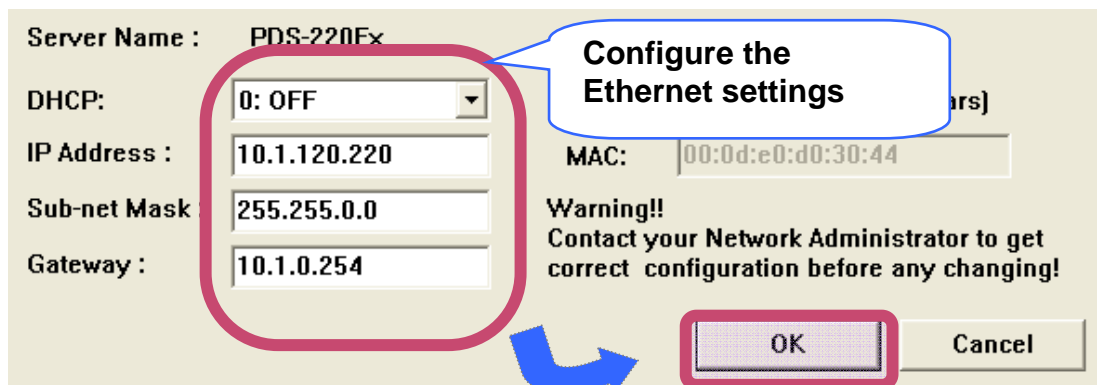
1. Locate the software from :
CD:\Napdos\driver\VxComm driver\
<http://www.icpdas.com/products/Software/VxComm/vxcomm.htm>
2. Install VxComm Utility.

5 Configuring Ethernet settings

1. Run VxComm Utility and click "Search Servers" button to search your PDS-220Fx.
2. Double-Click the PDS-220Fx to configure the Ethernet Settings.

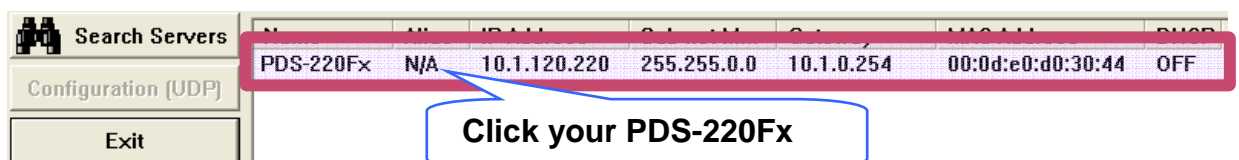


3. Contact your Network Administrator to get correct network configuration.
4. Modify the network settings and then click "OK". The PDS-220Fx will restart it-self immediately.

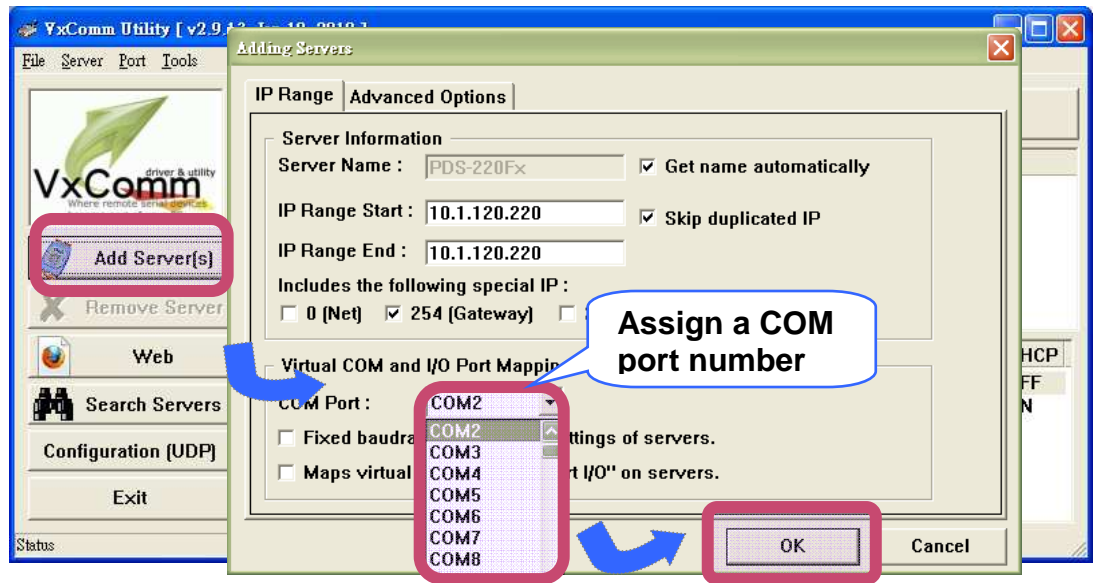


6 Configuring virtual COM ports

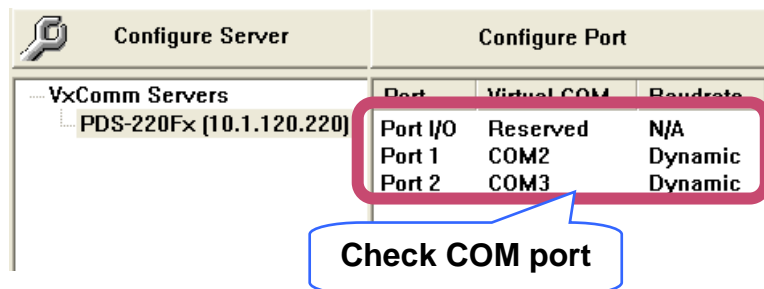
1. Again search out your PDS-220Fx to make sure the new IP/Mask/Gateway are set in, then click your PDS-220Fx to select it.



2. Click the button "Add Sever(s)", assign a COM port number and then click "OK".



3. Check the COM port numbers virtualized on PC.



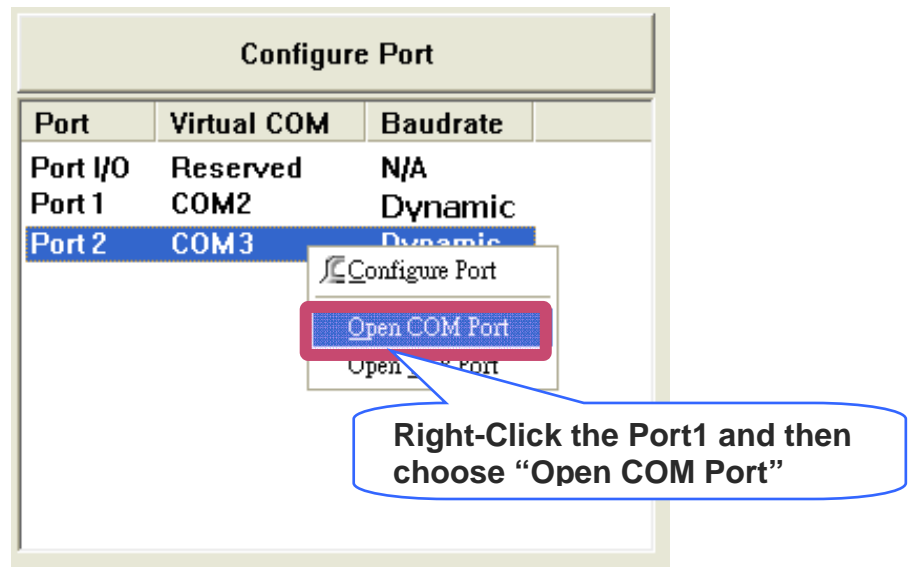
4. Click "Tools -> Restart Driver" and then click "Restart Driver" to start the driver.



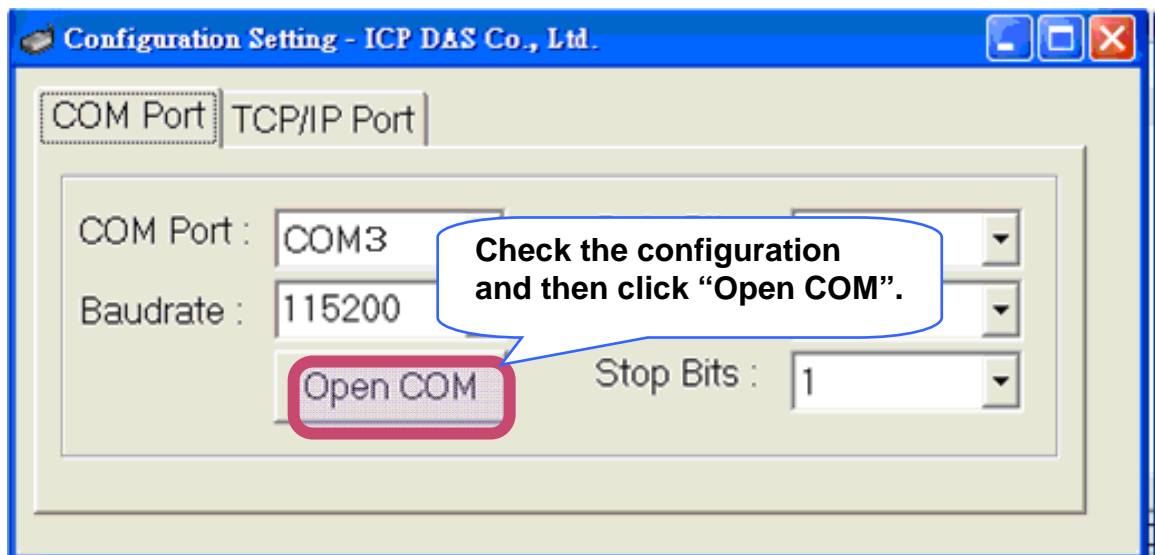
7

Testing your PDS-220Fx

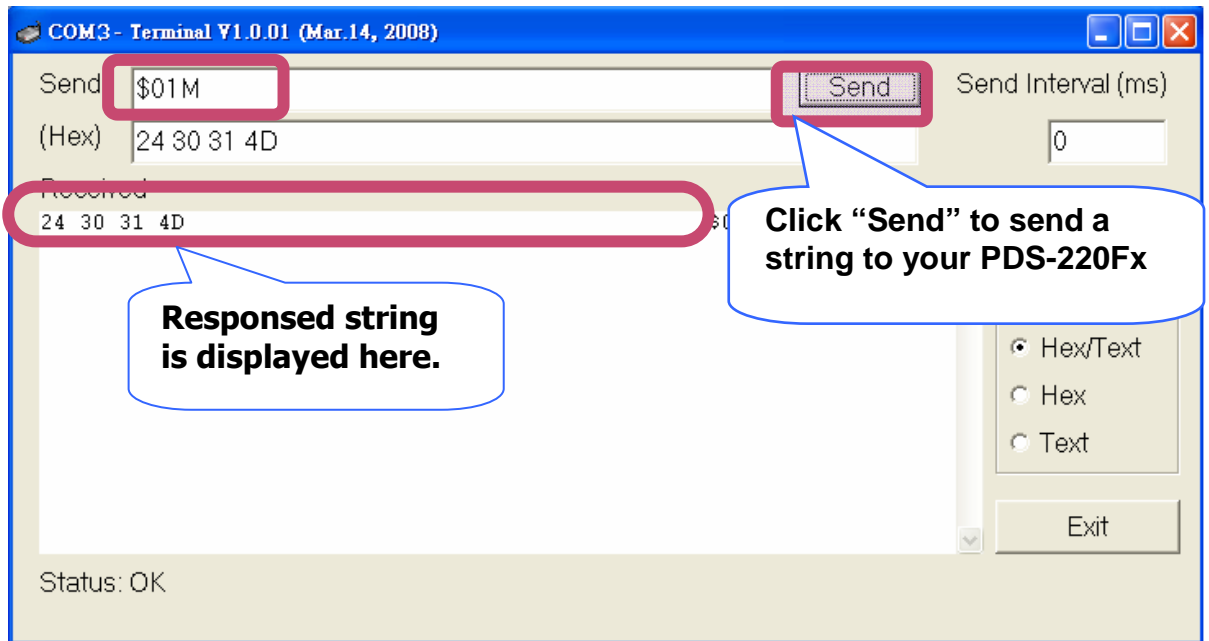
1. Right-Click the Port2 and then choose "Open COM Port".



2. Check the COM Port's configuration and then click "Open COM".



3. Send a string and get a response that should be the same as sent.





Additional Information

PDS-220Fx Series Document :

CD:\Napedos\PDS\PDS-220Fx\document\

<http://ftp.icpdas.com.tw/pub/cd/8000cd/napedos/pds/pds-220fx/document/>



PDS-220Fx Series firmware :

CD:\Napedos\PDS\PDS-220Fx\VxComm\Server(PDS)\

[http://ftp.icpdas.com.tw/pub/cd/8000cd/napedos/pds/pds-220fx/vxcomm/server\(pds\)/](http://ftp.icpdas.com.tw/pub/cd/8000cd/napedos/pds/pds-220fx/vxcomm/server(pds)/)



More demo programs :

CD:\NAPDOS\PDS\PDS-220Fx\demo

<http://ftp.icpdas.com.tw/pub/cd/8000cd/napedos/pds/pds-220fx/demo/>



The PDS-220Fx Series Web Site

<http://www.icpdas.com/products/Industrial/pds/pds-220fx.htm>

The ICP DAS Web Site

<http://www.icpdas.com>

- Technical support
- Supplies and ordering information
- Information to enhance the product
- FAQ & Application story



Contact Us

Service@icpdas.com