



Quick Start Guide for PDS-800 Series

Language English
Version V1.0
Update Aug.2009

1

What's on your package?

1. One PDS-800 series device
2. One software utility CD
3. One download cable (CA-0910)
4. One Quick Start Guide (This document)



2

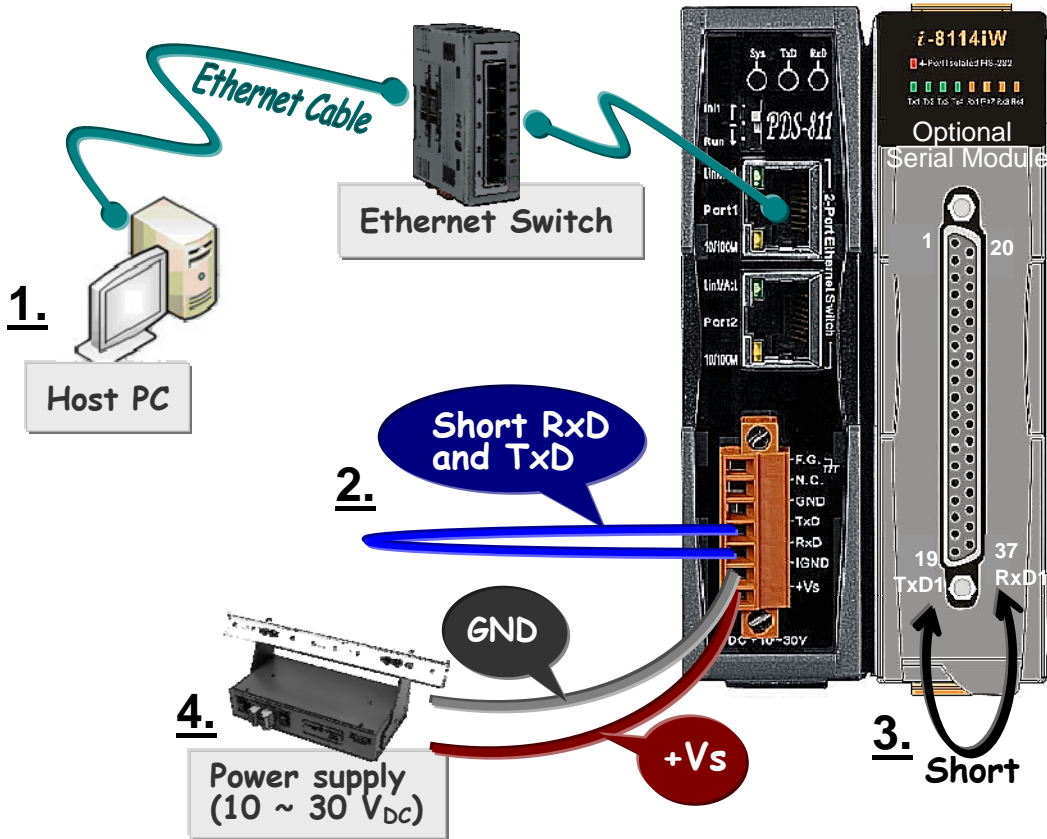
Preparations for start-up the PDS-800

1. If you have a serial module (*Ex: I-8114iW*), insert it in PDS-800 controller.
2. Power Supply : +10 ~ +30 VDC (*Ex: DP-665*)
http://www.icpdas.com/products/Accessories/power_supply/power_list.htm
3. Ethernet hub (*Ex: NS-205*)
http://www.icpdas.com/products/Switch/industrial/industrial_list.htm
4. Make sure your PC has workable network settings.
5. Disable or well configure your Windows firewall and Anti-Virus firewall first, else the "Search Servers" on page 3 may not work.
(Please contact with your System Administrator)

3

Connecting the Power and Host PC

Diagram 3-1:



1. Connect both the PDS-800 controller and your computer to the same sub network or the same Ethernet Switch.
2. Short the RxD and TxD pins of the PDS-800 controller for self-test.
3. Short the TxD1 (Pin 19) and RxD1 (Pin 37) pins of the 4-Port I-8114iW module for example of self-test.
4. Supply +24 VDC (+10 ~ +30 VDC) power to the PDS-800 controller.

4

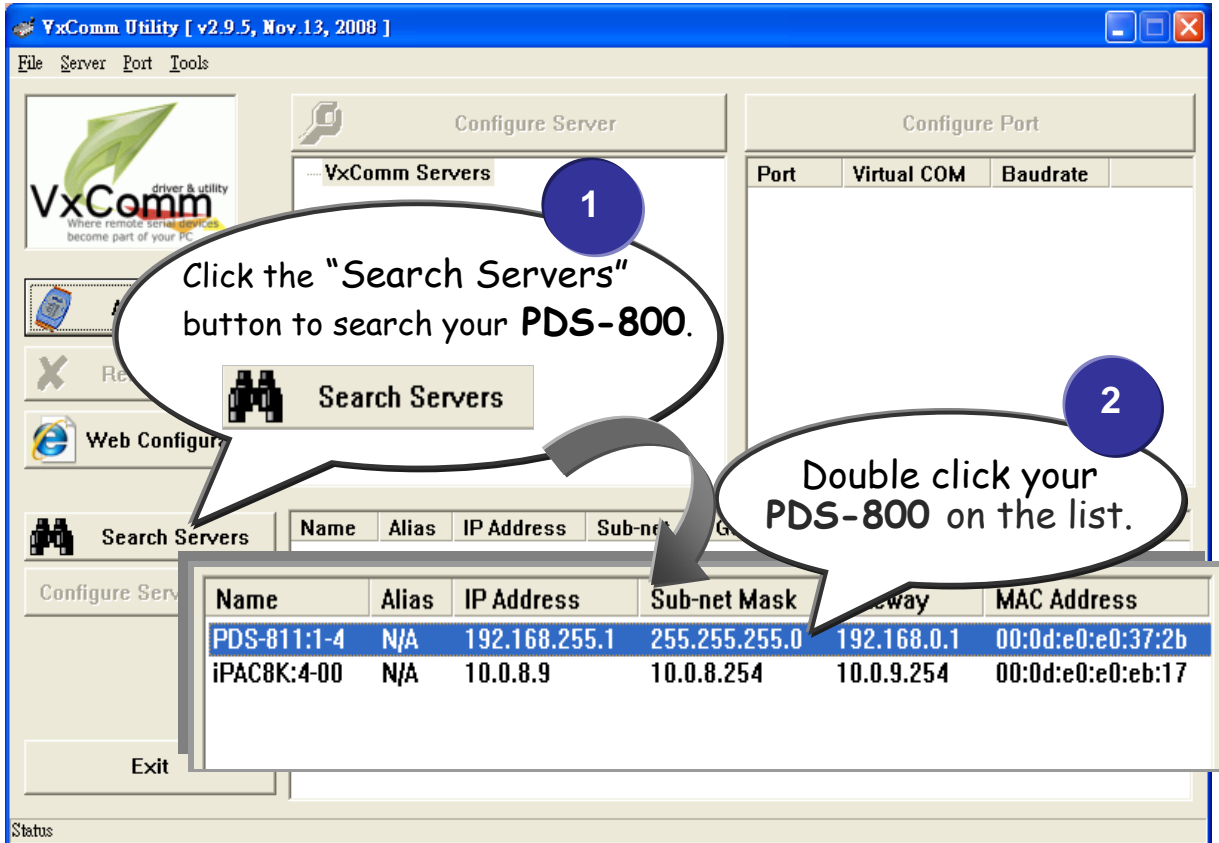
Installing VxComm Utility on your PC

The software is located at: CD: \NAPDOS\Driver\VxComm_Driver
http://ftp.icpdas.compub/cd/8000cd/napdos/driver/vxcomm_driver/

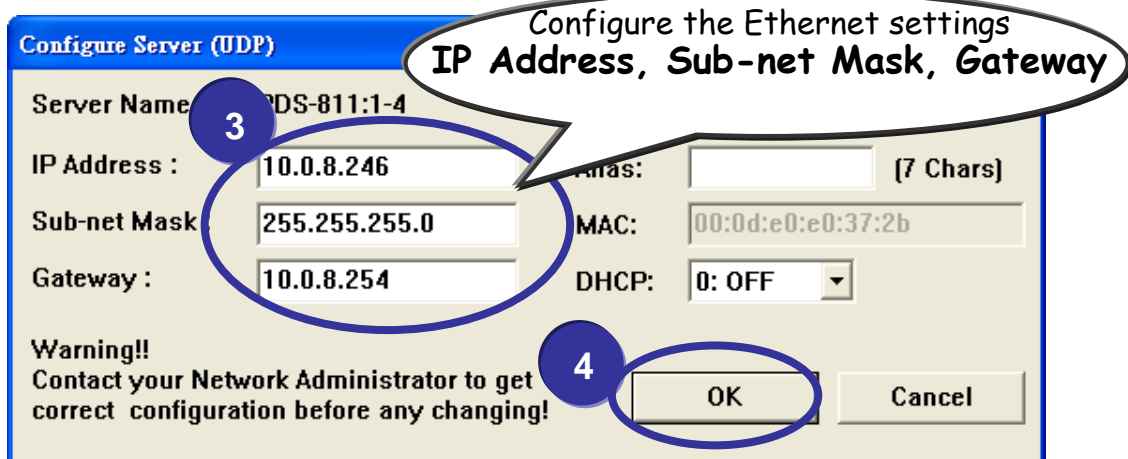
5

Configuring Ethernet settings

1. Execute the VxComm Utility and then search your PDS-800 controller.
2. Double click the name of the PDS-800 to open the Configure Server dialog box.



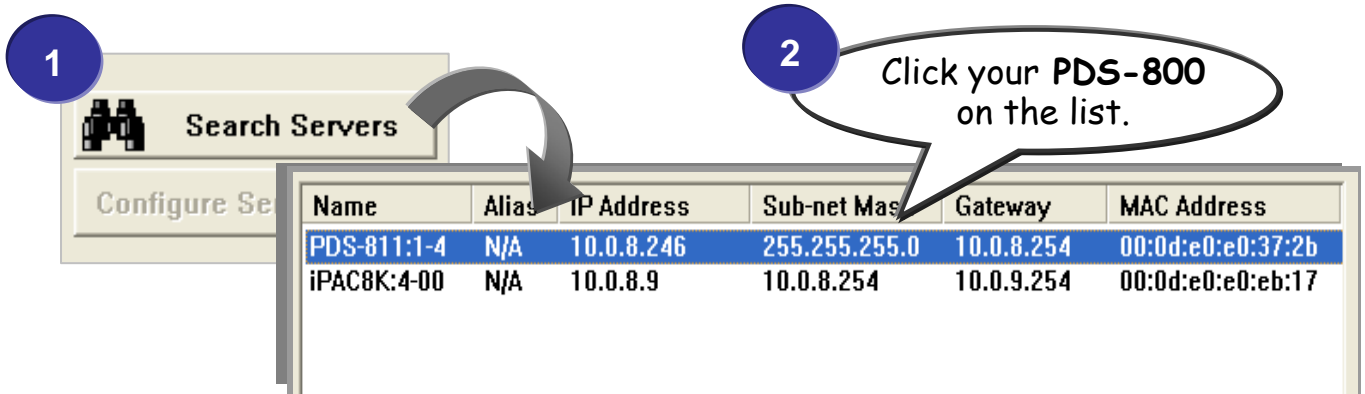
3. Contact your Network Administrator to obtain a correct network configuration (such as IP/Mask/Gateways). Enter the network settings and then click "OK". The PDS-800 controller will be restarted itself immediately.



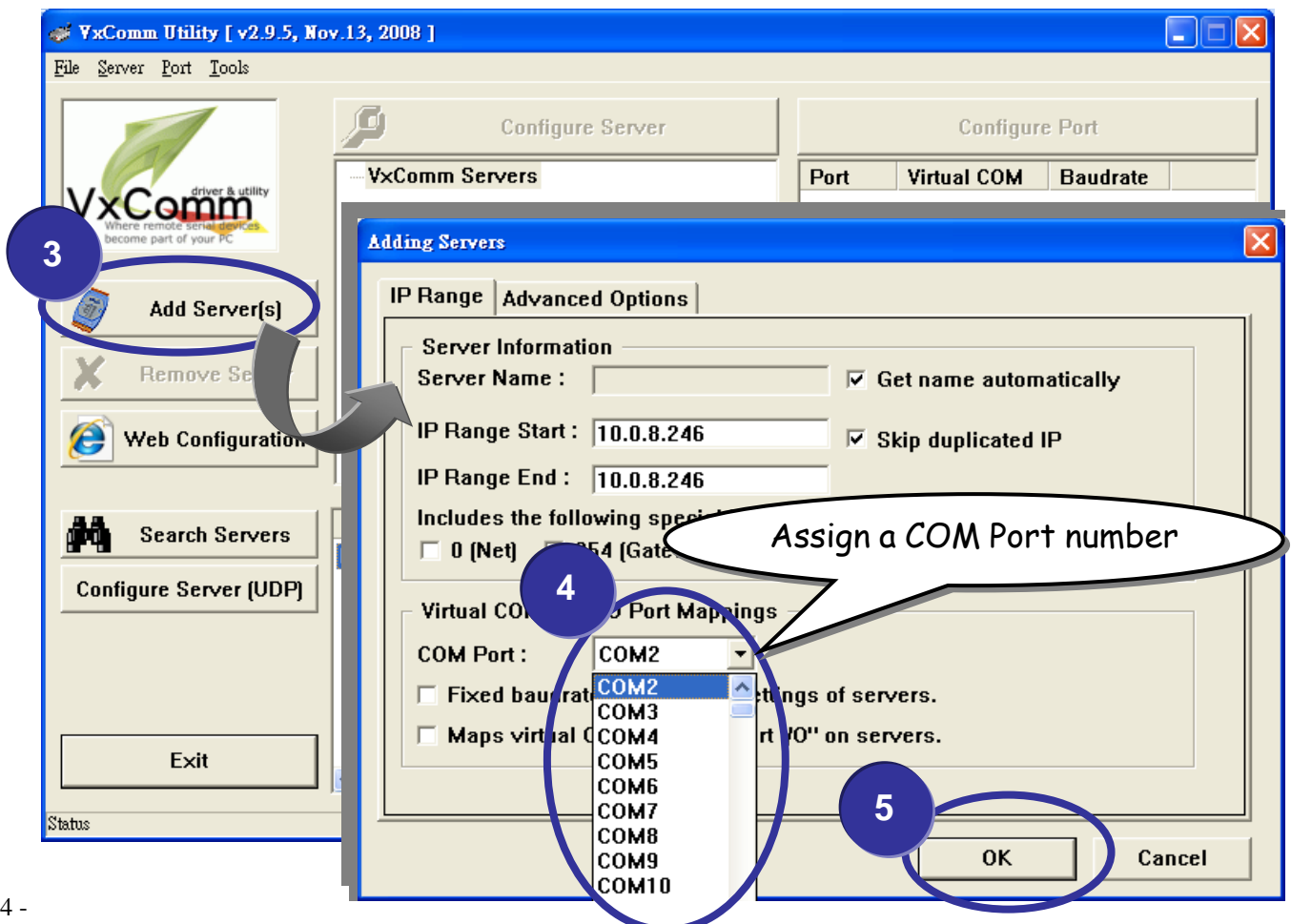
6

Configuring Virtual COM Ports

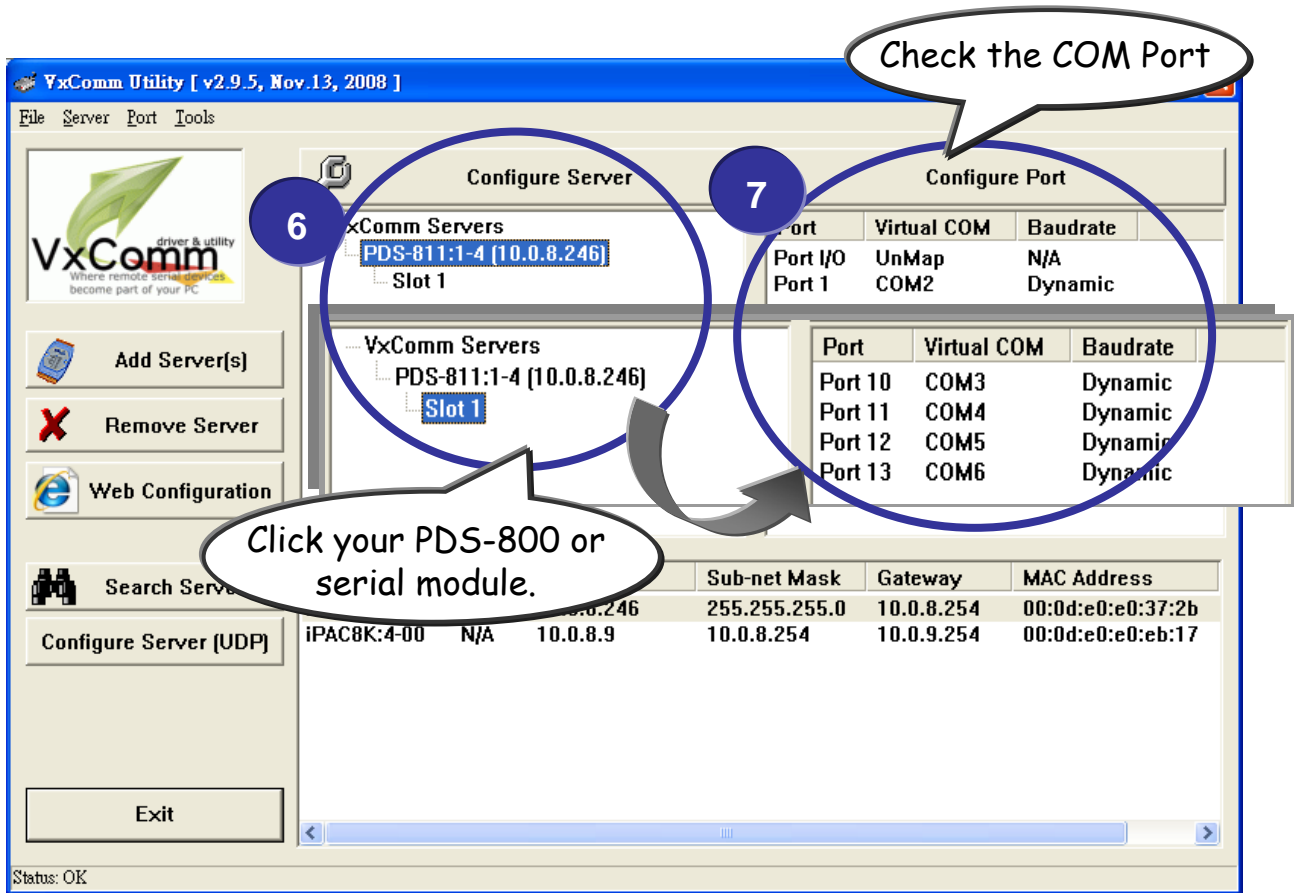
1. Click the **"Search Servers"** button again to search PDS-800 to ensure the new configuration of PDS-800 is working well. Then click your PDS-800 on the list to select it.



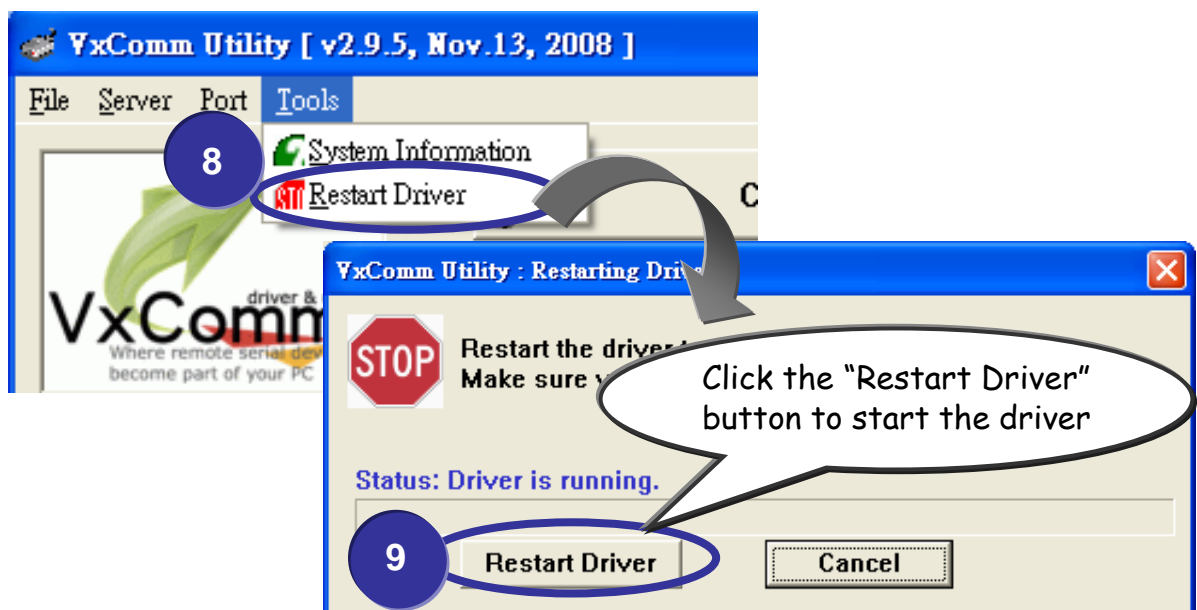
2. Click the **"Add Server [s]"** button. Assign a COM Port number and click **"OK"** to save your settings.



- Click on PDS-800 name or slot that your module plugged in, and then check the Virtual COM port numbers on the PC.



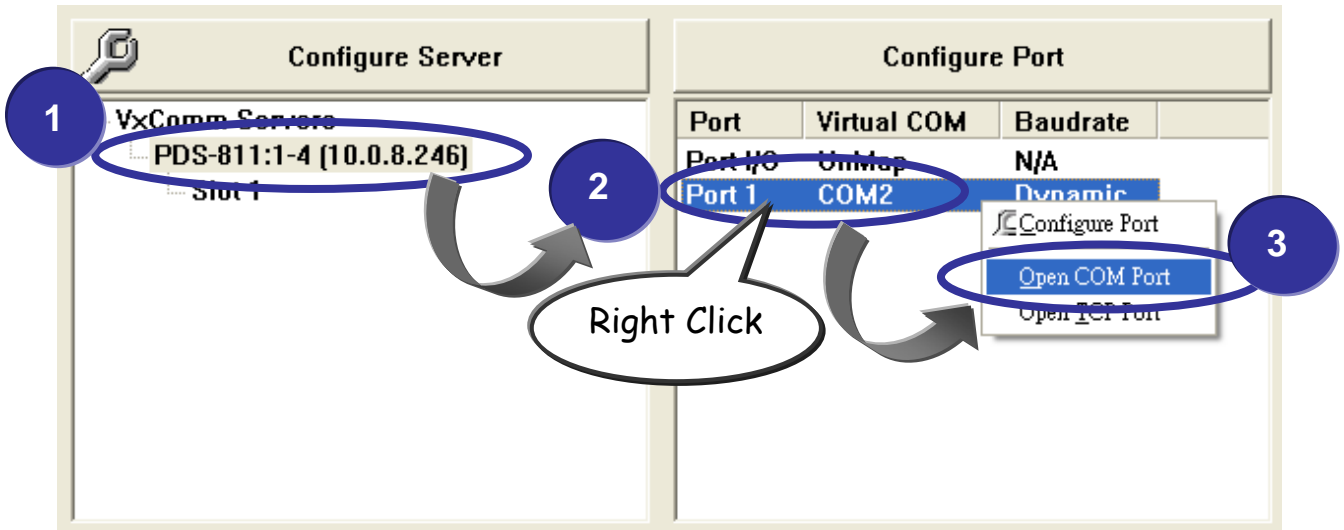
- Click **“Tools”** >> **“Restart Driver”**, and then click the **“Restart Driver”** button to start the driver.



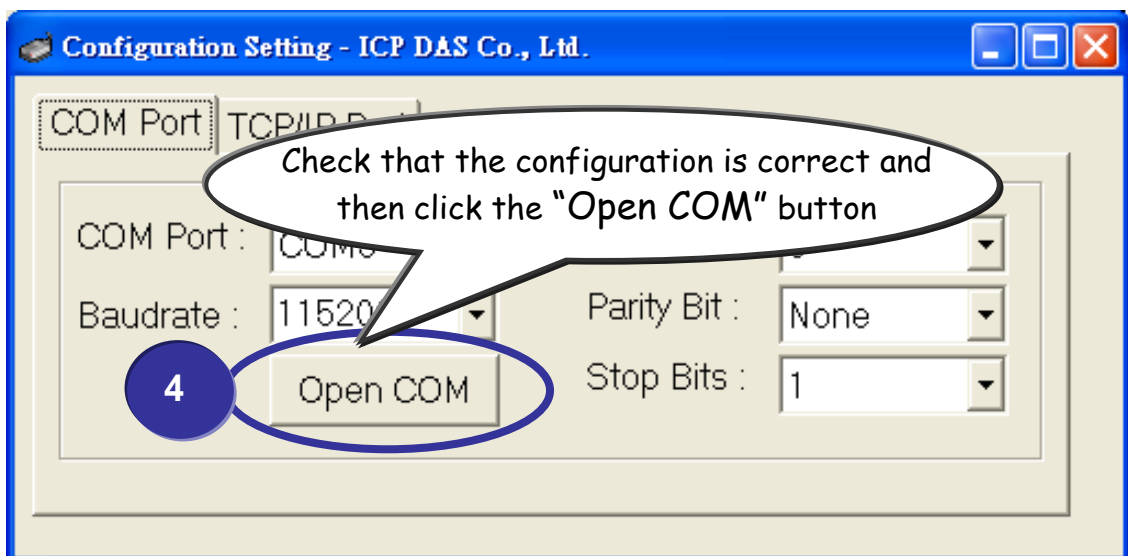
7

Testing your PDS-800

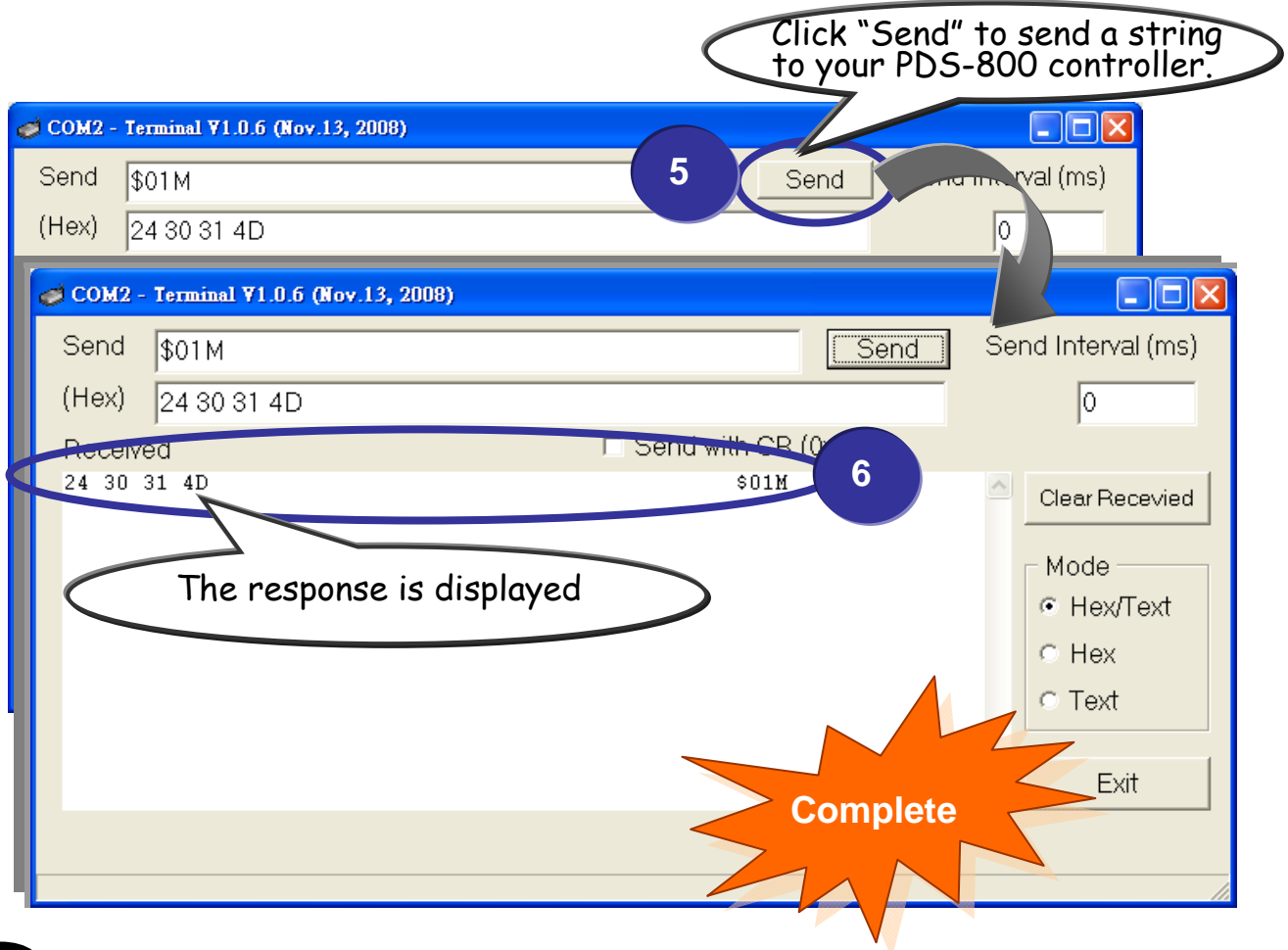
1. Right click Port 1 and then choose the “Open COM Port” item.



2. Check that the configuration of the COM Port is correct and then click the “Open COM” button.



3. Type a string in the send field then click the **“Send”** button.
If a response is received, it will be displayed in the received field.



8

Testing your serial modules (Optional)

1. Click **“Slot 1”** and right click Port 10 and then choose the **“Open COM Port”** option. (Such as Sec.7-1, P6)
2. Check that the configuration of the COM Port is correct and then click the **“Open COM”** button. (Such as Sec.7-2, P6)
3. Type a string in the send field then click the **“Send”** button. Check whether the response is the same with the string sent or not. (Such as Sec.7-3, P7)
4. If the test is successful, other COM port programs will be able to work directly with using the Virtual COM Port.
5. While using RS-485 modules (*Ex: I-8144iW*), you should wire the Data1+ with Data2+ signals, and wire the Data1- with Data2- signals for self-test. Then open the first two COM ports, send data to one and receive data from the other.

9

Additional Information

➤ **PDS-800 Series Product page:**

<http://www.icpdas.com/products/Industrial/pds/pds-8x1.htm>

➤ **PDS-800 Documentations :**

CD:\Napdos\pds\pds-8x1\document\

<http://ftp.icpdas.com/pub/cd/8000cd/napdos/pds/pds-8x1/document/>

➤ **PDS-800 firmware :**

CD:\Napdos\pds\pds-8x1\vxcomm\server(pds)\

[http://ftp.icpdas.com/pub/cd/8000cd/napdos/pds/pds-8x1/vxcomm/server\(pds\)/](http://ftp.icpdas.com/pub/cd/8000cd/napdos/pds/pds-8x1/vxcomm/server(pds)/)

ICP DAS Web Site

<http://www.icpdas.com>



Contact Us

Service@icpdas.com

- Technical support
- Supplies and ordering information
- Information related to upgrades, new technologies, products and solutions
- FAQ
- Application stories

Copyright ©2009 by ICP DAS Co., Ltd. All right are reserved