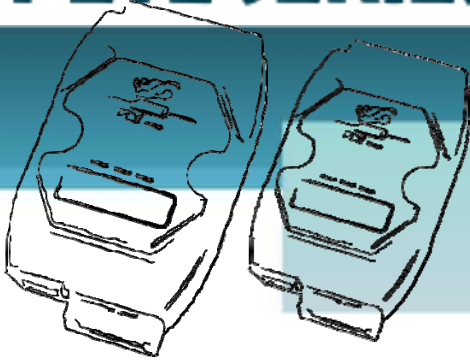


PETL SERIES QUICK START GUIDE



For PETL-7060

English/ November 2010/ Version 1.1

1 What's in the shipping package?

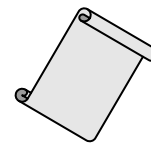
The package includes the following items:



PETL-7060



Software CD



Quick Start Guide
(This Document)

2 Preparations for devices

1. Power Supply: +12 ~ +48 Vdc
2. Ethernet Hub or PoE Ethernet Switch.
3. Make sure your PC has workable network settings.
4. Disable or well configure your Windows firewall and Anti-Virus firewall first, else the "**Search Servers**" on page 5 may not work. (Please contact with your system Administrator)

3 Pin Assignments and Wiring Note

Pin Assignments

Terminal No.	Pin Assignment
E1	RJ-45
01	DI5
02	DI4
03	DI3
04	DI2
05	DI1
06	DI0
07	DI.COM
08	(R)+Vs
09	(B)GND



Terminal No.	Pin Assignment
23	RL5 COM
22	RL5 NO
21	RL4 COM
20	RL4 NO
19	RL3 COM
18	RL3 NO
17	RL2 COM
16	RL2 NO
15	RL1 COM
14	RL1 NO
13	RL0 COM
12	RL0 NO
11	N/A
10	N/A

Digital Input/Output Wiring

Digital Input	Readback as 1	Readback as 0
Sink	+10 ~ +50 V _{DC} 	OPEN or <4 V _{DC}
	+10 ~ +50 V _{DC} 	OPEN or <4 V _{DC}
Source	+10 ~ +50 V _{DC} 	OPEN or <4 V _{DC}
	+10 ~ +50 V _{DC} 	OPEN or <4 V _{DC}

Digital Output	Readback as 1	Readback as 0
Relay Output	Relay On 	Relay Off
	Relay On 	Relay Off

■ DI/DO Modbus Address

(1xxxx) DI address:

Begin address	Points	Description	Bits per Point	Range	Access Type
0 (0x0)	1~6	Digital Input	1	0: Off 1: On	R
32 (0x20)	1~6	Digital latched status (high)	1	0: no 1: latched	R
64 (0x40)	1~6	Digital latched status (low)	1	0: no 1: latched	R

(0xxxx) DO address:

Begin address	Points	Description	Bits per Point	Range	Access Type
0 (0x0)	1~6	Digital Output	1	0: Off 1: On	R/W
32 (0x20)	1	Clear all DI latched status (high)	1	1: Clear	W
33 (0x21)	1	Clear all DI latched status (low)	1	1: Clear	W
.
235 (0xEB)	1~6	Power-on value for DO	1	0=Off 1=On	R/W/F
267 (0x10B)	1~6	safe value for DO	1	0=Off 1=On	R/W/F

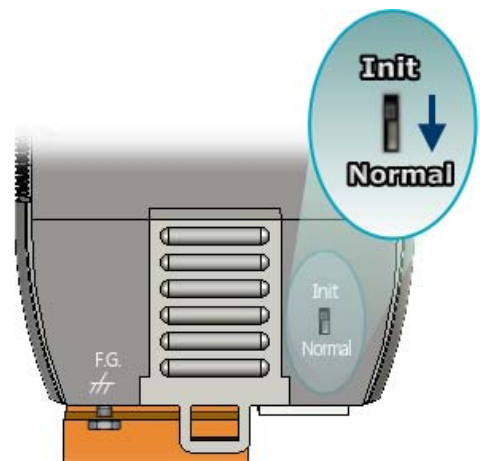


For detail "DI/DO Modbus Address" information, please refer to section **5.3 Modbus Register Address** of user's manual. CD: \NAPDOS\PETL7000\Document\

<http://ftp.icpdas.com/pub/cd/6000cd/napdos/petl7000/document/>

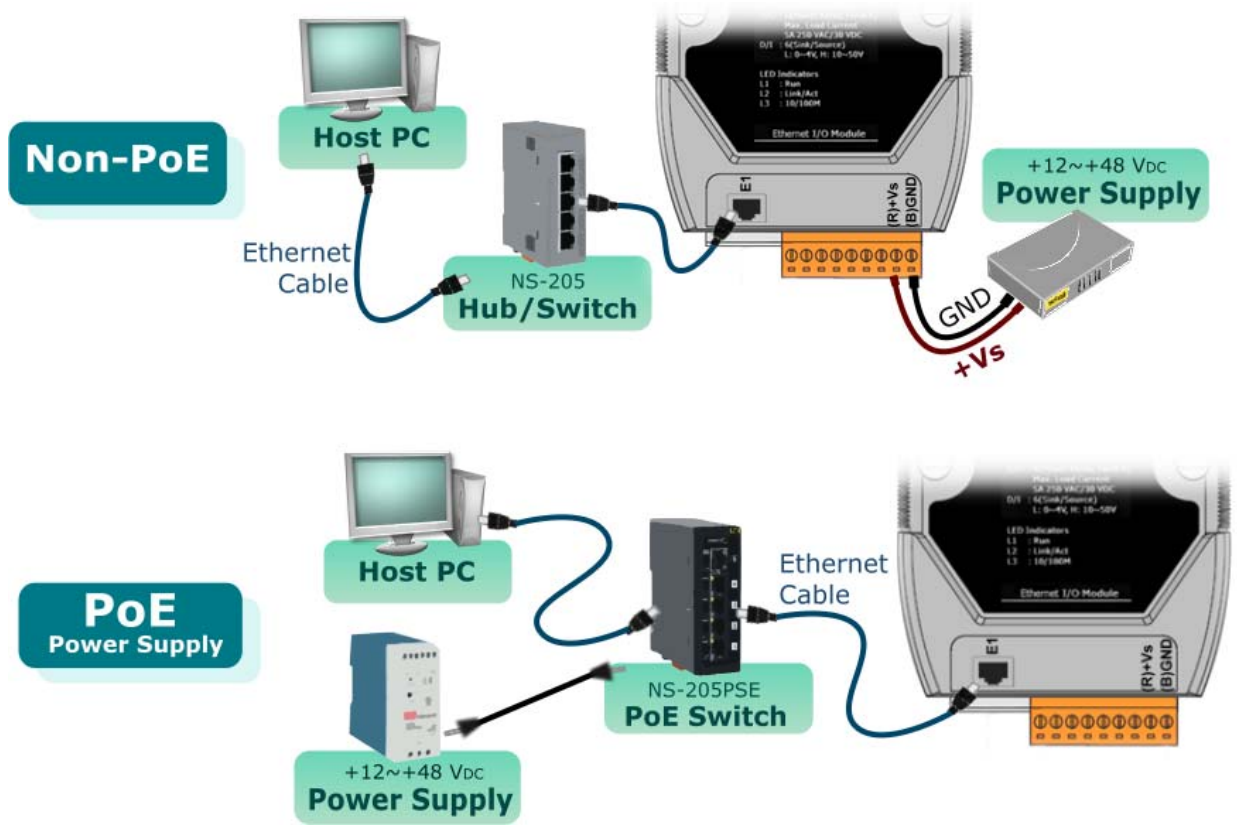
4 Connecting the Power and Host PC

1. Check Init/Normal switch is on **Normal** position.

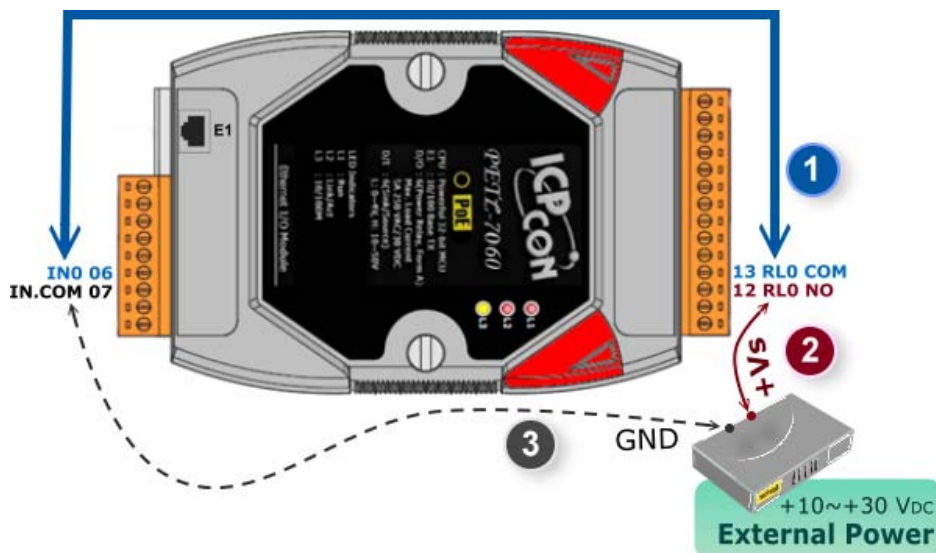


- Connect both the PETL-7060 and PC to the same sub network or the same Ethernet Switch.

i The function of the Ethernet LED on PETL-7000 RJ-45 is reserved (Function: N/A).
- Apply power to the PETL-7060. The valid power voltage range is from +12 to +48 Vdc.



- Wire the DI and DO for self test. The wiring as follows:
 - Connect the **RL0 COM** and **IN0**. (Pin13 connect to Pin06)
 - Supply the **External Power +10V** to **RL0 NO**. (External +10V connect to Pin12)
 - Supply the **External Power GND** to **IN.COM**. (External GND connect to Pin07)



5

Configuring Ethernet Settings

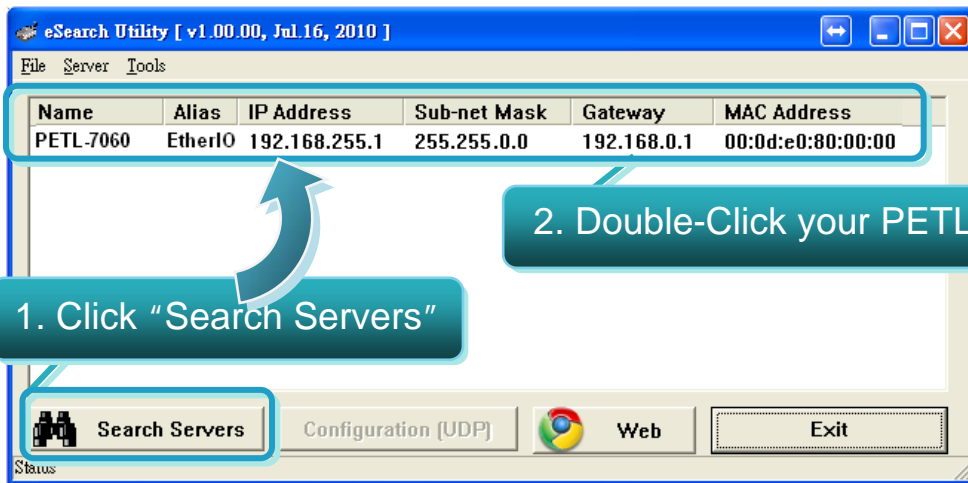
1. Run the eSearch Utility.

The eSearch Utility is located at:
CD:\Napdos\Software\eSearch\

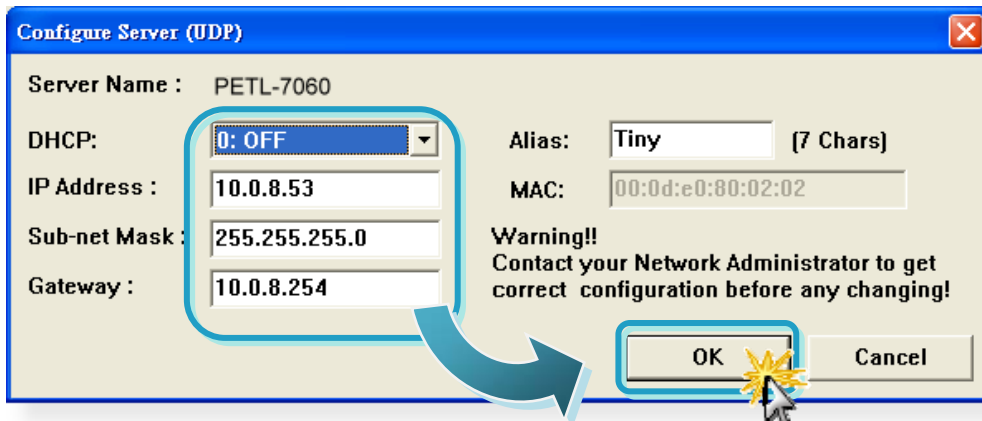
<ftp://ftp.icpdas.com/pub/cd/6000cd/napdos/software/eSearch/>



2. Click "Search Servers" button to search your PETL-7060.
3. Double-Click your PETL-7060 to configure the settings.



4. Contact your Network Administrator to get correct network configuration. Modify the network settings and then click "OK" button. The PETL-7060 will restart it-self immediately.



6 Testing your PETL-7000

Notes: In order to avoid accessing error in "IE" browser, please disable your IE cache as following:

Step 1: Click "**Tools**" >> "**Internet Options...**" in the menu items.

Step 2: Click the "**General**" tab and then click the "**Settings...**" button in Temporary Internet files frame.

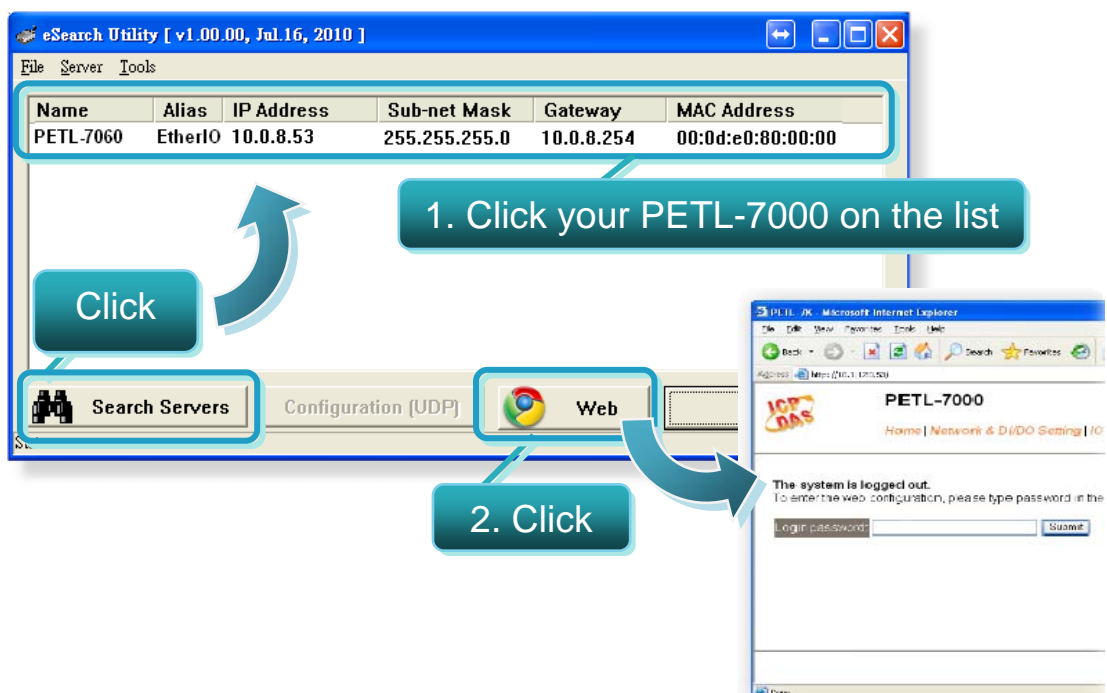
Step 3: Click the "**Every visit to the page**" and then click the "**OK**" button in Settings box and Internet Options box.

For more detail, please refer to the user manual (Page 77)

C:\Napdos\PETL7000\Document\

<http://ftp.icpdas.com/pub/cd/6000cd/napdos/petl7000/document/>

1. Wait 2 seconds and then click the "**Search Servers**" button again to ensure the PETL-7060 is working well with new configuration.
2. Click the "**Web**" button to link the PETL-7060 web server.

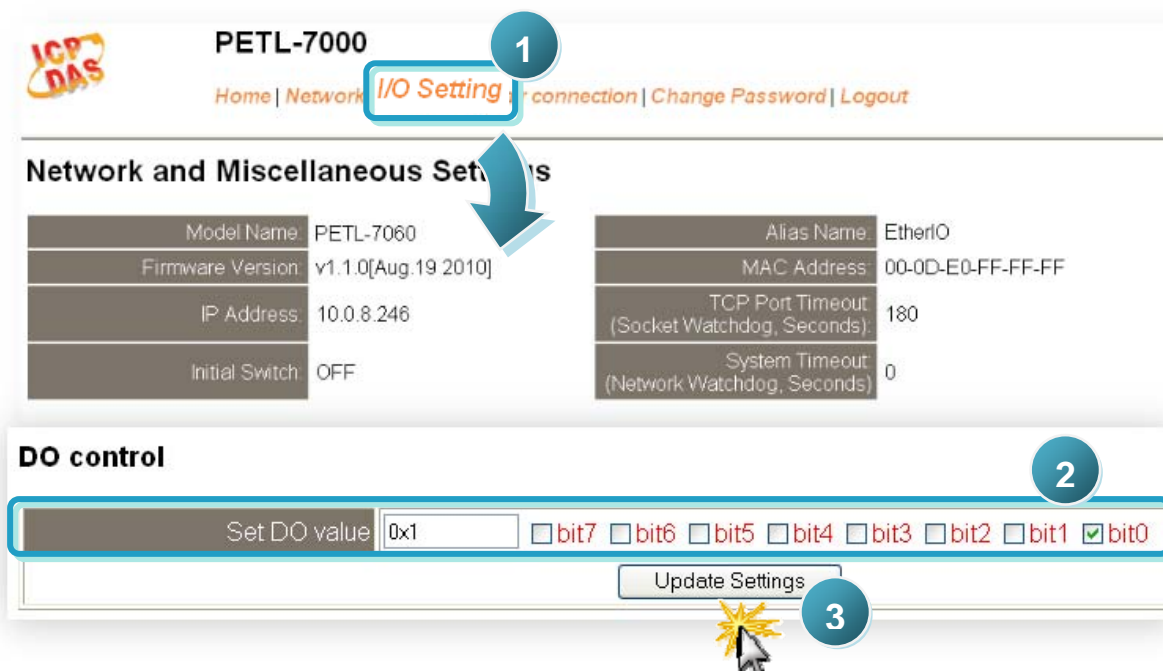


3. Enter the password and click the “**Submit**” button to enter the configuration web page. (The factory default password: **Admin**)



4. Control the I/O for simple test.

In the **I/O Setting** page, check the “**bit0**” checkbox for setting ON to DO0 and click “**Update Settings**” button.



In the **Home** page, check that the DO0 and DI0 status should show current status are “ON”.

PETL-7000

1 **Home** | Network | I/O Setting | pair connection | Change Password | Logout

DI/DO

ALL DI:	Value	Digital Counter	High Latched	Low Latched
DI 0:	ON	0	Disable	Disable
DI 1:	OFF	0	Disable	Disable
DI 2:	OFF	0	Disable	Disable
DI 3:	OFF	0	Disable	Disable
DI 4:	OFF	0	Disable	Disable
DI 5:	OFF	0	Disable	Disable
DI 6:	-	-	-	-
DI 7:	-	-	-	-

2

3

DO7 - DO6 - DO5 OFF DO4 OFF DO3 OFF DO2 OFF DO1 OFF DO0 **ON**



Related Information

- PETL-7060 Series Product Page:**
<http://www.icpdas.com/products/Industrial/petl7k/petl-7060.htm>
- PETL-7000 Series Documentations:**
 CD:\Napdos\PETL7000\document\
<http://ftp.icpdas.com.tw/pub/cd/6000cd/napdos/petl7000/document/>
- PETL-7000 Series Firmware:**
 CD:\Napdos\PETL7000\firmware\
<http://ftp.icpdas.com.tw/pub/cd/6000cd/napdos/petl7000/firmware/>
- NS-205, NS-205PES Product Page (optional):**
<http://www.icpdas.com/products/Switch/industrial/ns-205.htm>
<http://www.icpdas.com/products/Switch/industrial/ns-205pse.htm>

