



Quick Start

PPDS-700-MTCP Series

English/ Nov. 2015/ Version 1.4

1

Check the Supplied Items

The package includes the following items:

❶ PPDS(M)-700-MTCP Series



PPDS-700-MTCP

Or



PPDSM-700-MTCP

❷ Quick Start (This Guide)



❸ Software CD



❹ CA-0910 Cable



2

Installing Software on Your PC

Install **VxComm Utility**, which can be obtained from either the companion CD-ROM or the web site:



VxCommW7_v2.12.06_setup
VxComm Driver W7 Setup
ICP DAS Co., Ltd.



CD: \NAPDOS\Driver\VxComm_Driver\



http://ftp.icpdas.com/pub/cd/8000cd/napdos/driver/vxcomm_driver/

3

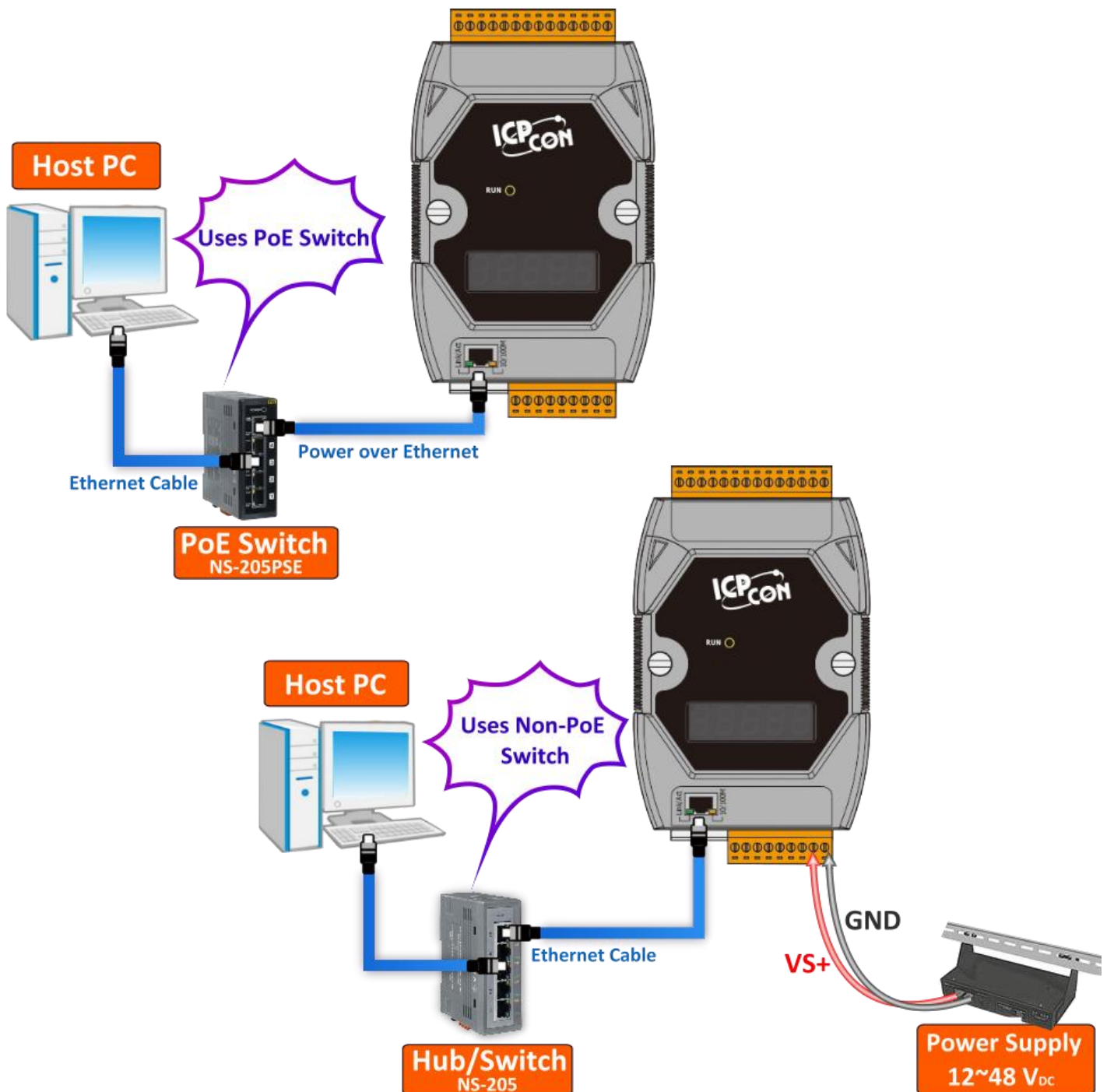
Connecting the Power and Host PC

❶ Make sure your PC has workable network settings.

Disable or well configure your Windows firewall and Anti-Virus firewall first, else the “Search Servers” on Chapter 5 may not work. (Please contact with your system Administrator)

❷ Connect both the PPDS-700-MTCP and your PC to the same sub network or the same Ethernet Switch.

❸ Supply power (PoE or +12 ~ +48 V_{DC}) to the PPDS-700-MTCP.



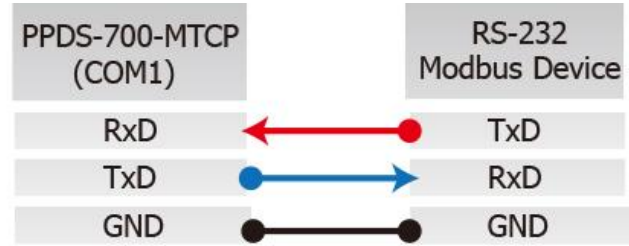
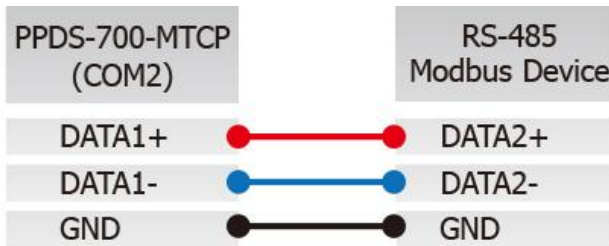
4

Connecting the Modbus Devices

❶ Connect the Modbus device (Slave, e.g., M-7055D, optional) to your PPDS-700-MTCP on COM2 (RS-485 bus). **Note that wiring method depends on your Modbus device.**

RS-485 Wiring

RS-232 Wiring

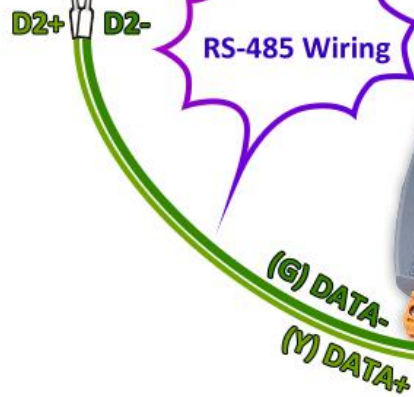


❷ Supply power (+10 ~ +30 V_{DC}) to the Modbus device (e.g., M-7055D, Device ID: 1).

PPDS-700-MTCP
(Device ID: 255, Default)



Modbus Device
(Device ID: 1)



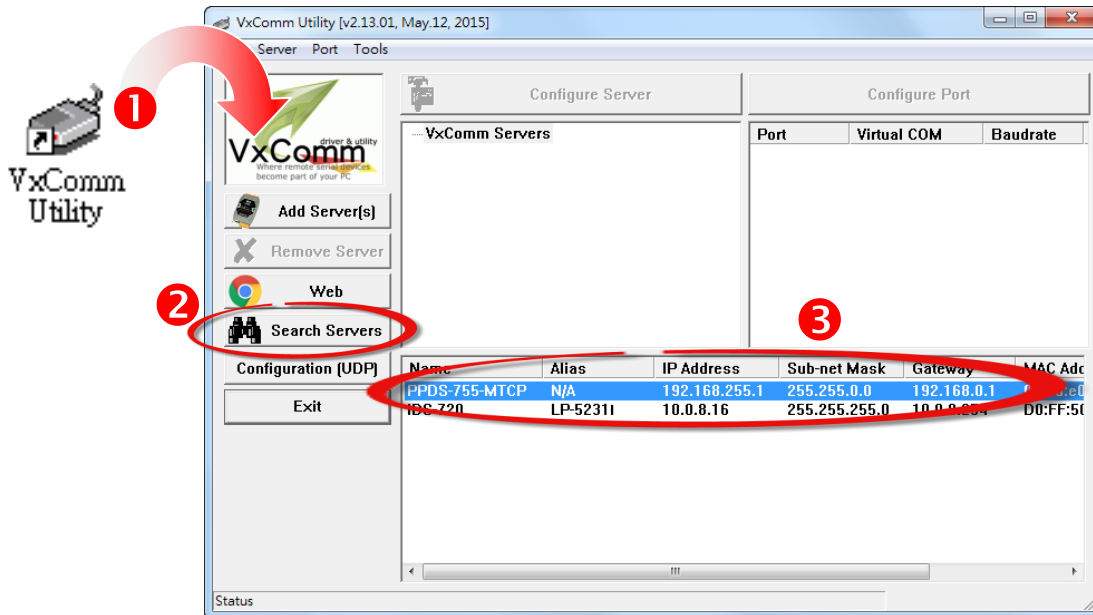
Power Supply

GND
+Vs

5

Configuring the Correct Network Settings

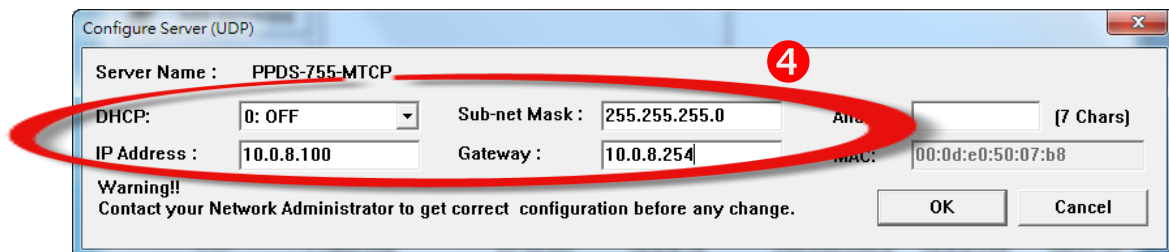
- 1 Double click the VxComm Utility shortcut on the desktop.
- 2 Click the “Search Servers” button to search your PPDS-700-MTCP.
- 3 Double click the name of PPDS-700-MTCP to open the “Configure Server (UDP)” dialog box.



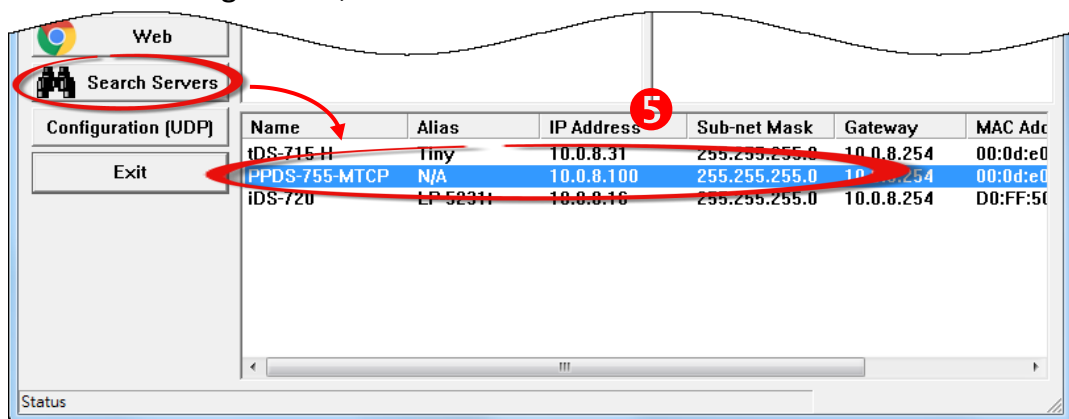
Factory Default Settings for the PPDS-700-MTCP:

IP	192.168.255.1
Gateway	192.168.0.1
Mask	255.255.0.0

- 4 Contact your Network Administrator to obtain a correct network configuration (such as IP/Mask/Gateway). Enter the network settings and then click “OK”.
The PPDS-700-MTCP will use the new setting 2 seconds later.



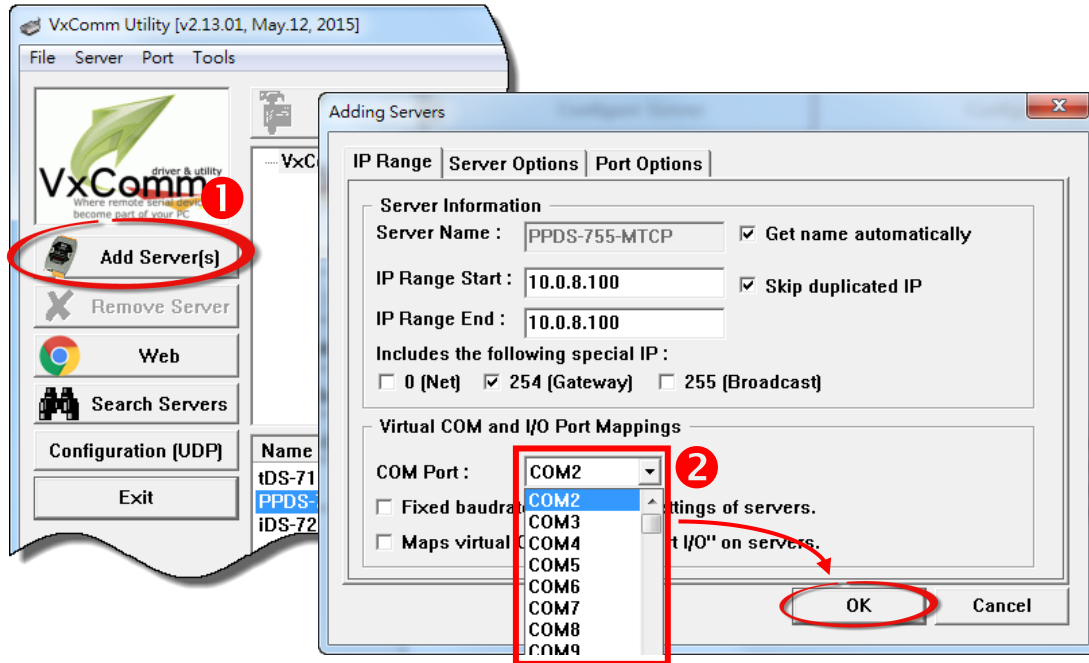
- 5 Wait 2 seconds and click the “Search Servers” button again to ensure the PPDS-700-MTCP is working well with new configuration, and then click the name of the PPDS-700-MTCP to select it.



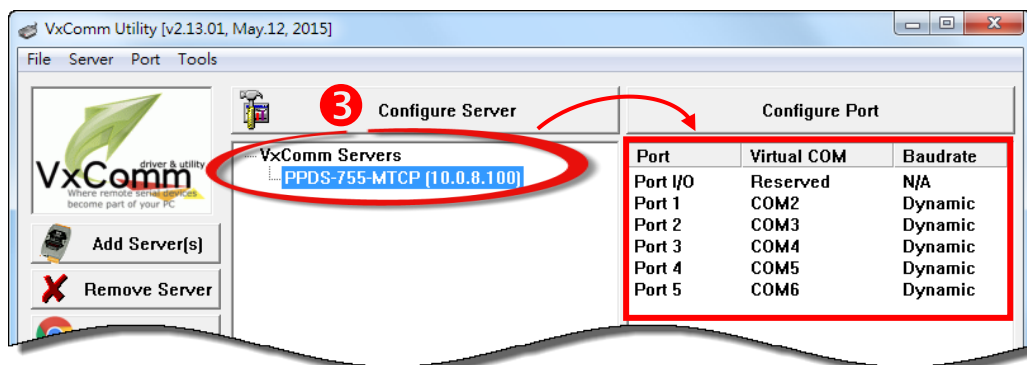
6

Configuring Virtual COM Ports

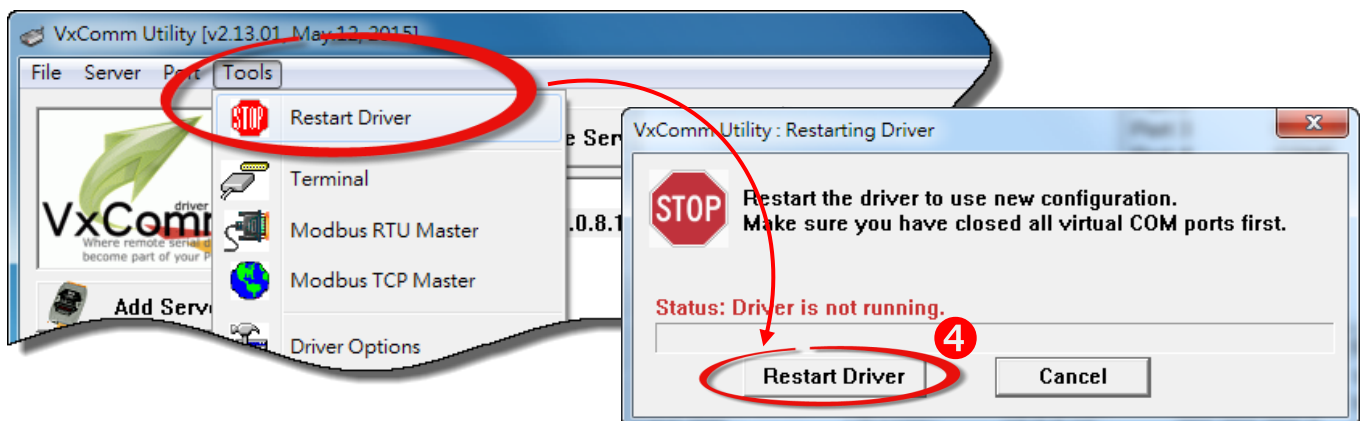
- 1 Click the "Add Server[S]" button to open the "Adding Servers" dialog box.
- 2 Assign a COM Port number and click the "OK" button to save your settings.



- 3 Click on PPDS-700-MTCP name and check the virtual COM port mappings on the PC.



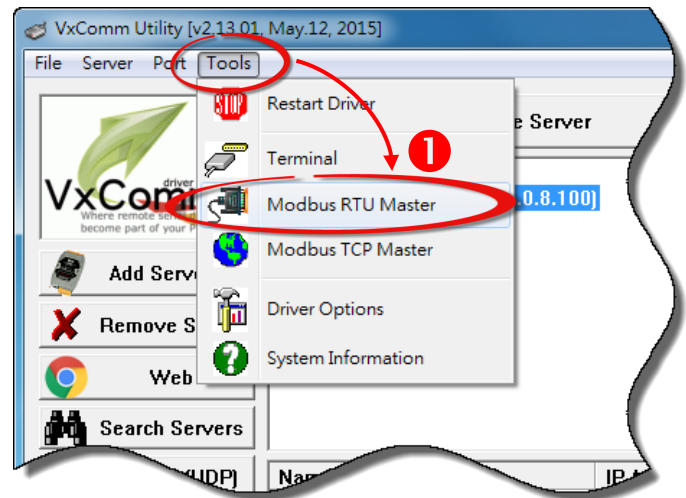
- 4 Click the "Tools" → "Restart Driver", and then click the "Restart Driver" button.



7

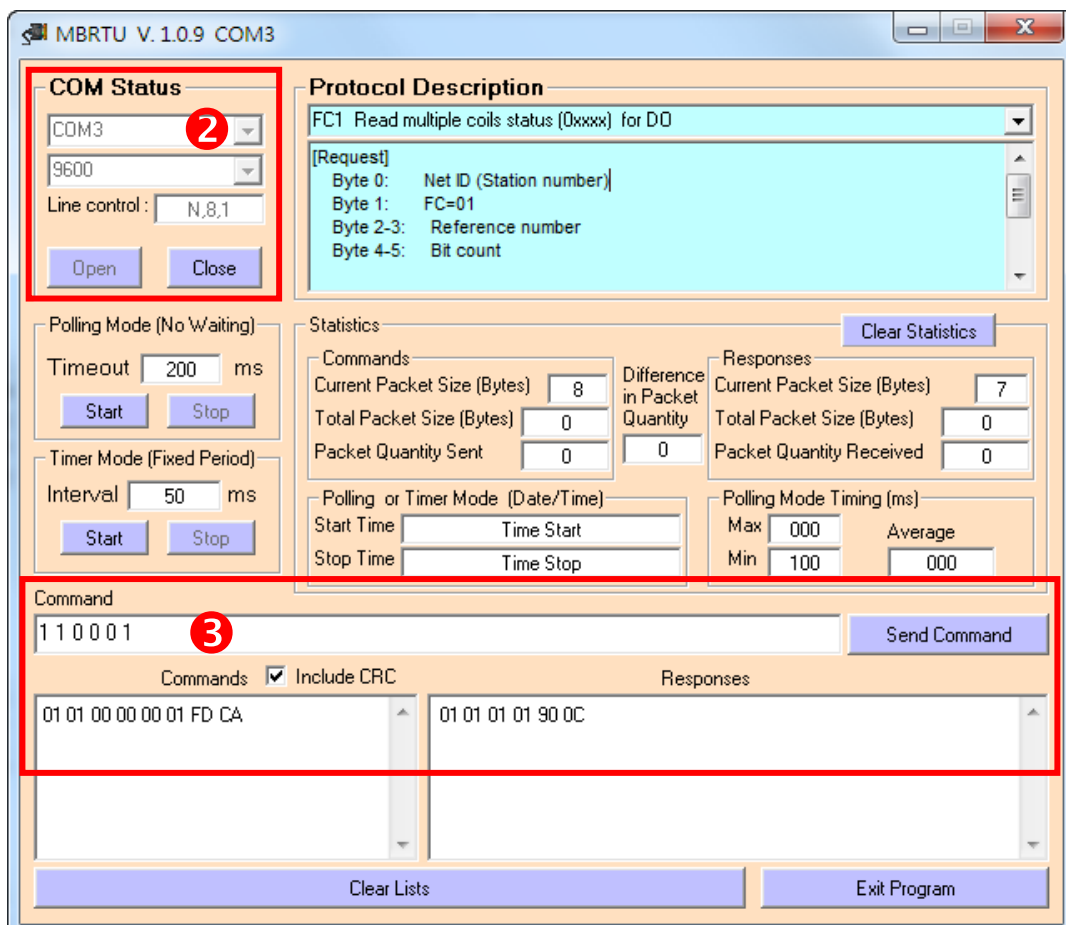
Testing Modbus Device through Virtual COM Ports

❶ In the VxComm Utility, select the “**Modbus RTU Master**” item from the “**Tools**” menu to open the Modbus RTU Master Utility.



❷ In the Modbus RTU Modbus Utility, select your virtual COM port and baud rate/data format (default: 9600/N, 8, 1) on PPDS-700-MTCP, and then click the “**Open**” button.

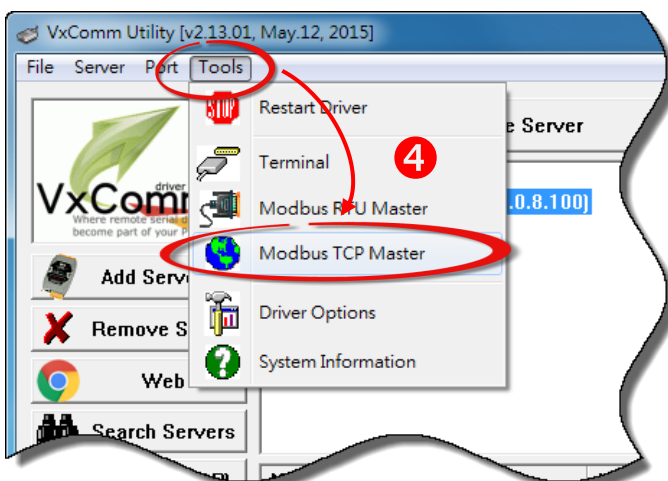
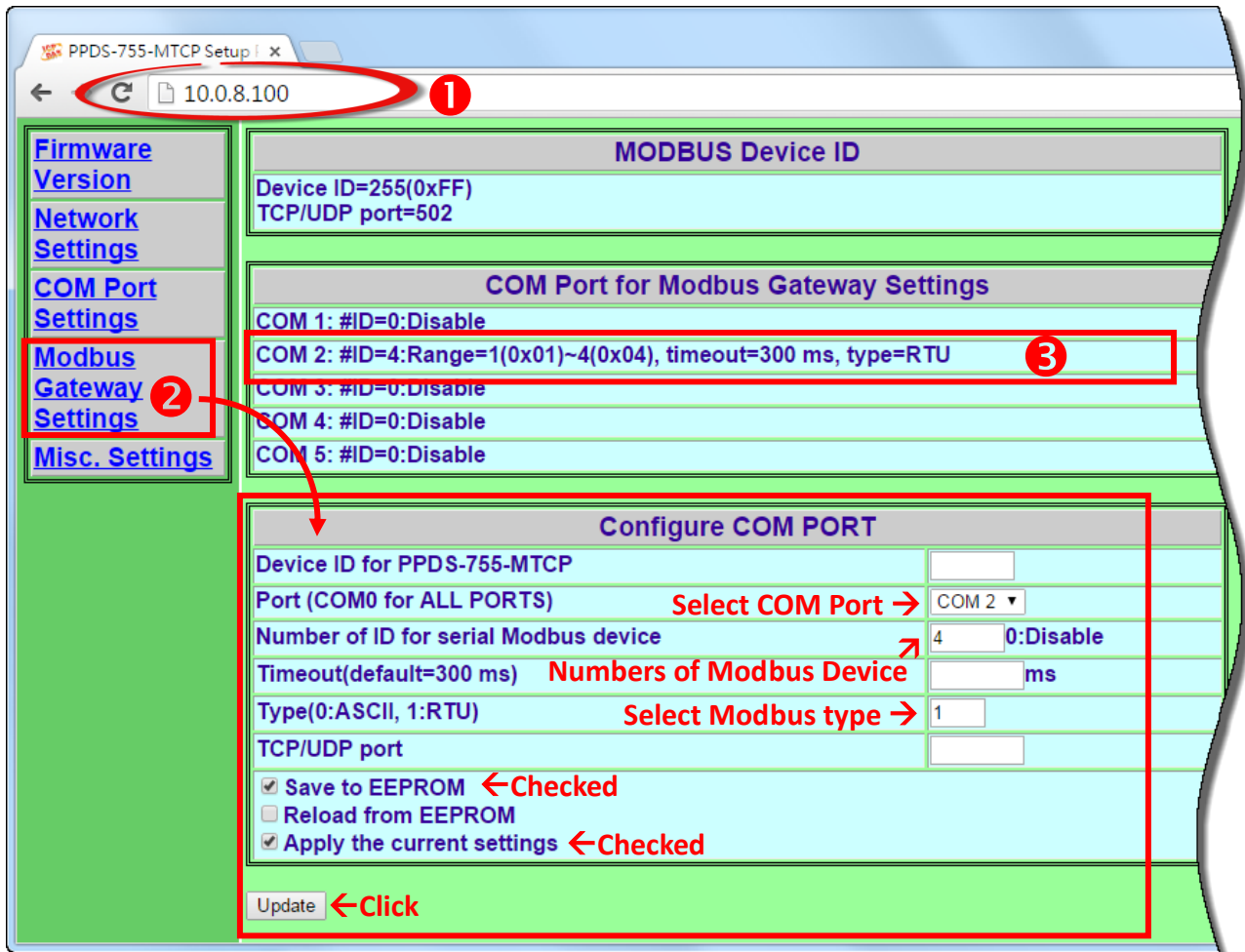
❸ Refer to “**Protocol Description**” and **type the command** in the command field then click the “**Send command**” button. If the **response data** is correct, it means the test is success.



8

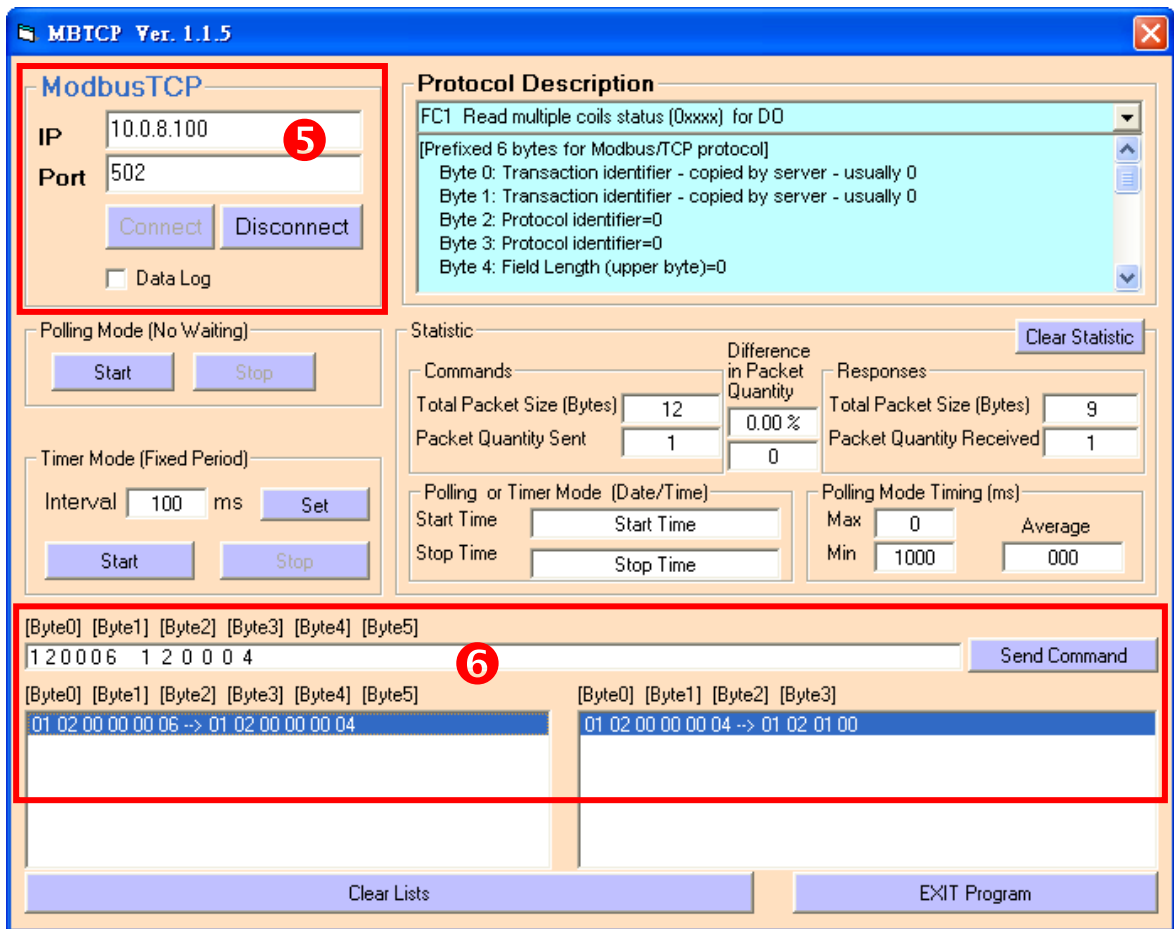
Modbus/TCP to Modbus/RTU Gateway

- 1 Open web browser, type the URL address of the PPDS-700-MTCP and press “Enter” to connect to the PPDS-700-MTCP.
- 2 Click the “Modbus Gateway Setting” in the web page to configure the COM Ports, as illustrated in the diagram below.
- 3 Check the COM Port for Modbus gateway setting.



- 4 Back to VxComm Utility, select the “Modbus TCP Master” item from the “Tools” menu to open the Modbus TCP Master Utility.

- ⑤ In the Modbus TCP Modbus Utility, enter the IP address of PPDS-700-MTCP and click the “Connect” button to connect the PPDS-700-MTCP.
- ⑥ Refer to “Protocol Description” and type the command in the command field then click the “Send command” button. If the response data is correct, it means the test is success.



Note:
 The flash protection function is disabled for factory default settings. User can modify the program or update the firmware. If you want to enable flash protection function, refer to Section 2.10 Flash Protection Function of the PDS-700 user manual.
<http://ftp.icpdas.com/pub/cd/8000cd/napdos/pds/pds-700/document/>

Related Information

- PPDS-700-MTCP product page:
http://www.icpdas.com/products/Industrial/pds/PPDS-700_Series.htm
- Documentation & Firmware:
 CD: \Napdos\PDS\PDS-700
<http://ftp.icpdas.com/pub/cd/8000cd/napdos/pds/pds-700/>