



Quick Start

for *tDS-700*, *tDS-700i*,
tDSM-700 Series

English/ Dec. 2016/ Version 1.3

1

Shipping Package

The package includes the following items:

- ❶ tDS-700/tDS-700i/tDSM-700 Series x1 ❷ Quick Start x1 ❸ Software CD x1 ❹ CA-002 Cable x1



Or



2

Installing Software on Your PC

Install VxComm Utility (v2.13.05 or later), which can be obtained from either the companion CD-ROM or the ICP DAS web site:



CD: \NAPDOS\software\VxComm_Driver\



http://ftp.icpdas.com/pub/cd/tinymodules/napdos/software/vxcomm_driver/

3

Connecting the Power and Host PC

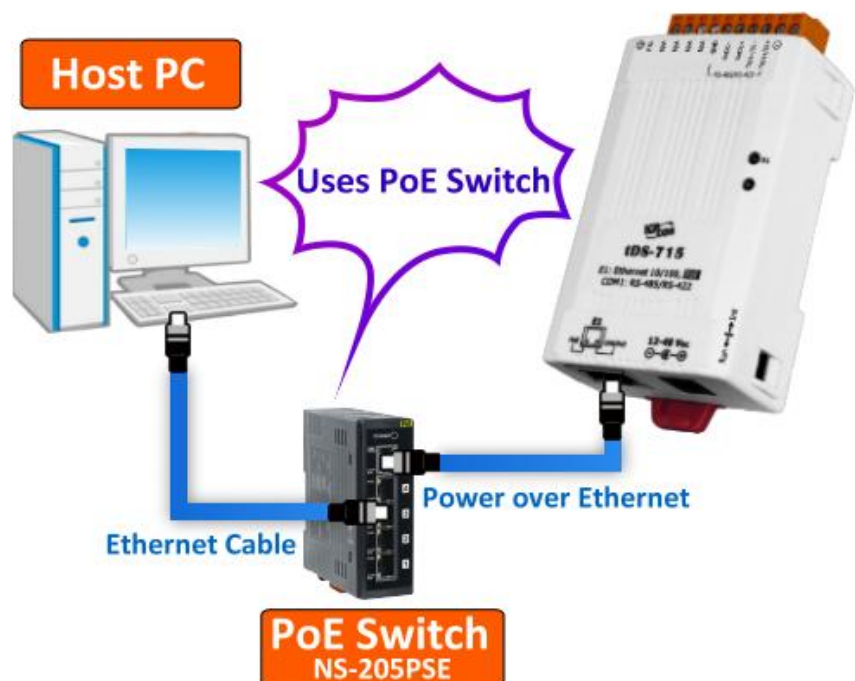
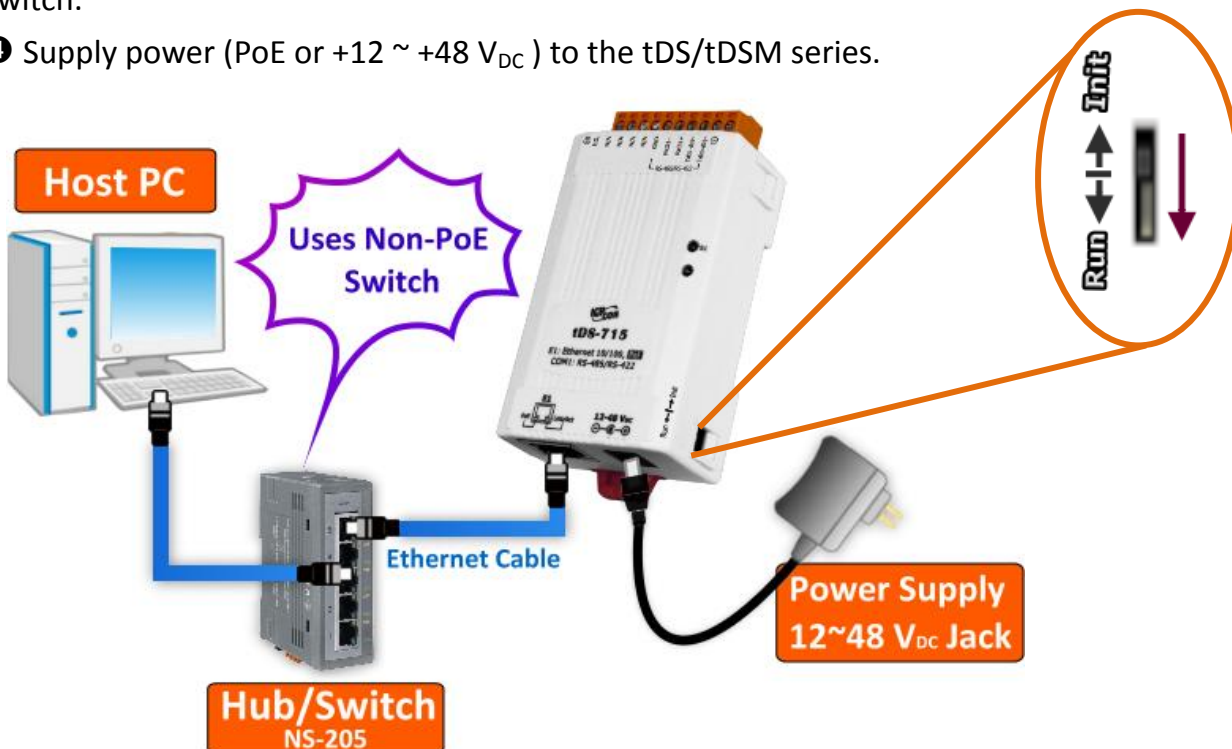
❶ Make sure your PC has workable network settings.

Disable or well configure your Windows firewall and Anti-Virus firewall first, else the “Search Servers” on Chapter 5 (page 4) may not work. (Please contact with your system Administrator)

❷ Check Init/Run switch is on “Run” position.

❸ Connect both the tDS/tDSM series and your PC to the same sub network or the same Ethernet Switch.

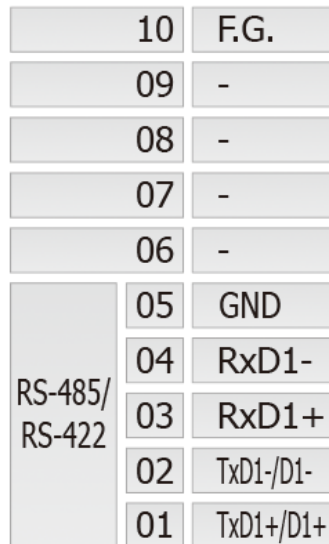
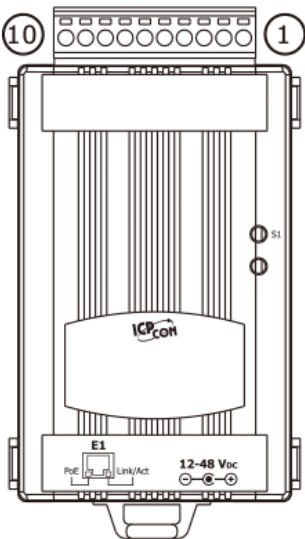
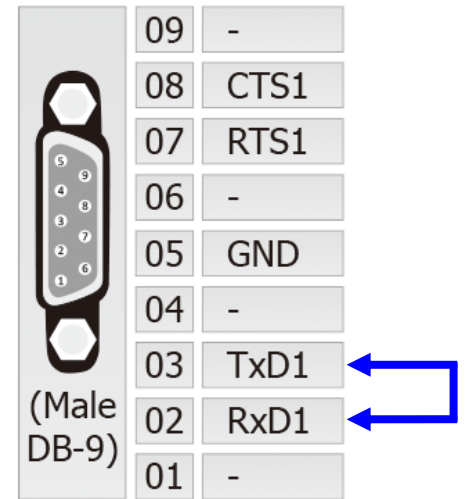
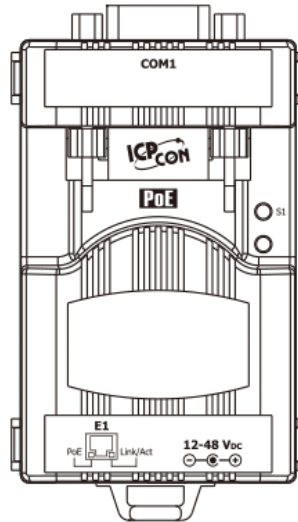
❹ Supply power (PoE or +12 ~ +48 V_{DC}) to the tDS/tDSM series.



4

Self-Test Wiring

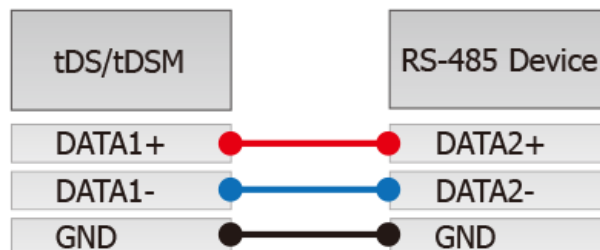
- **RS-232 Wiring:** Connect the RxD to the TxD pins (The tDS-712 is used as an example.)



- **RS-422 Wiring:** Connect the RxD1- to the TxD1- pins and connect the RxD1+ to the TxD1+ pins (The tDS-715 is used as an example.)



Note: While using RS-485 modules (e.g., tDS-715), you should wire the Data1+ with Data2+ signals, and wire the Data1- with Data2- signals for self-test.

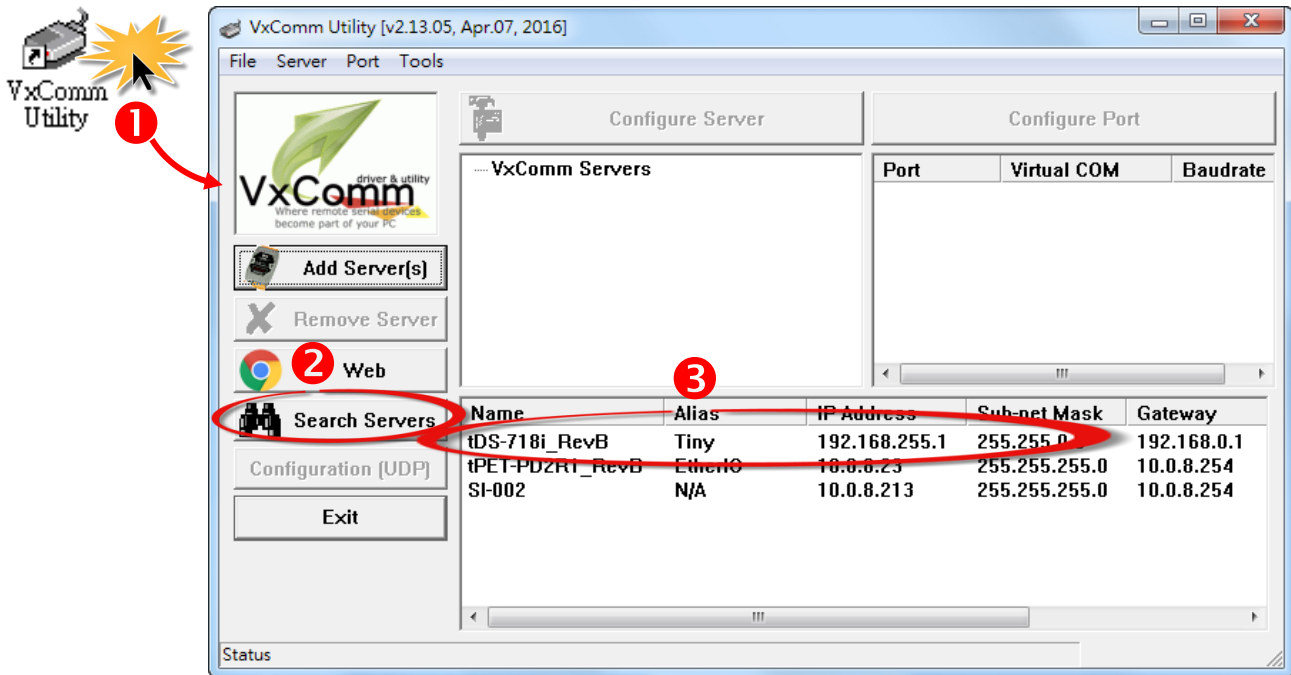


Then open the first two COM Ports, send data to one and receive data from the other.

5

Configuring Network Settings

- 1 Double click the VxComm Utility shortcut on the desktop.
- 2 Click the “Search Servers” button to search your tDS/tDSM.
- 3 Double click the name of tDS/tDSM to open the “Configure Server (UDP)” dialog box.



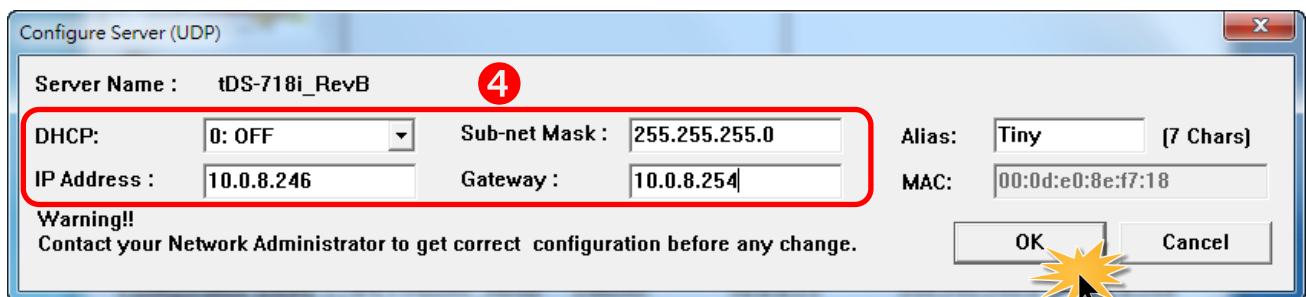
Factory Default Settings for the tDS/tDSM:

IP 192.168.255.1

Gateway 192.168.0.1

Mask 255.255.0.0

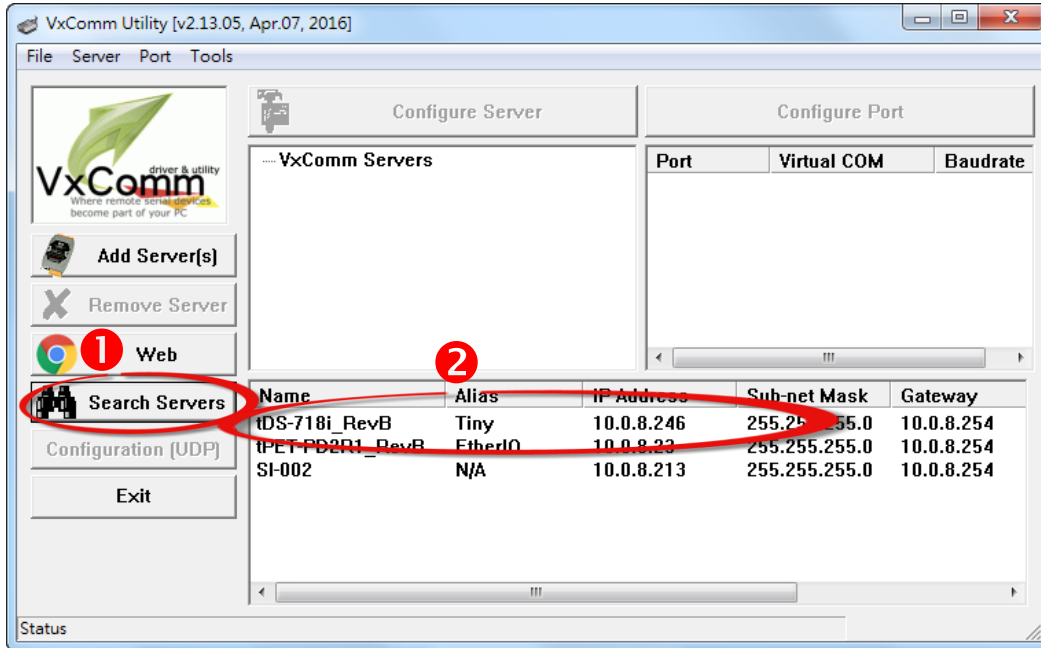
- 4 Contact your Network Administrator to obtain a correct network configuration (such as **IP/Mask/Gateway**). Enter the network settings and then click “OK”. The tDS/tDSM will use the new setting 2 seconds later.



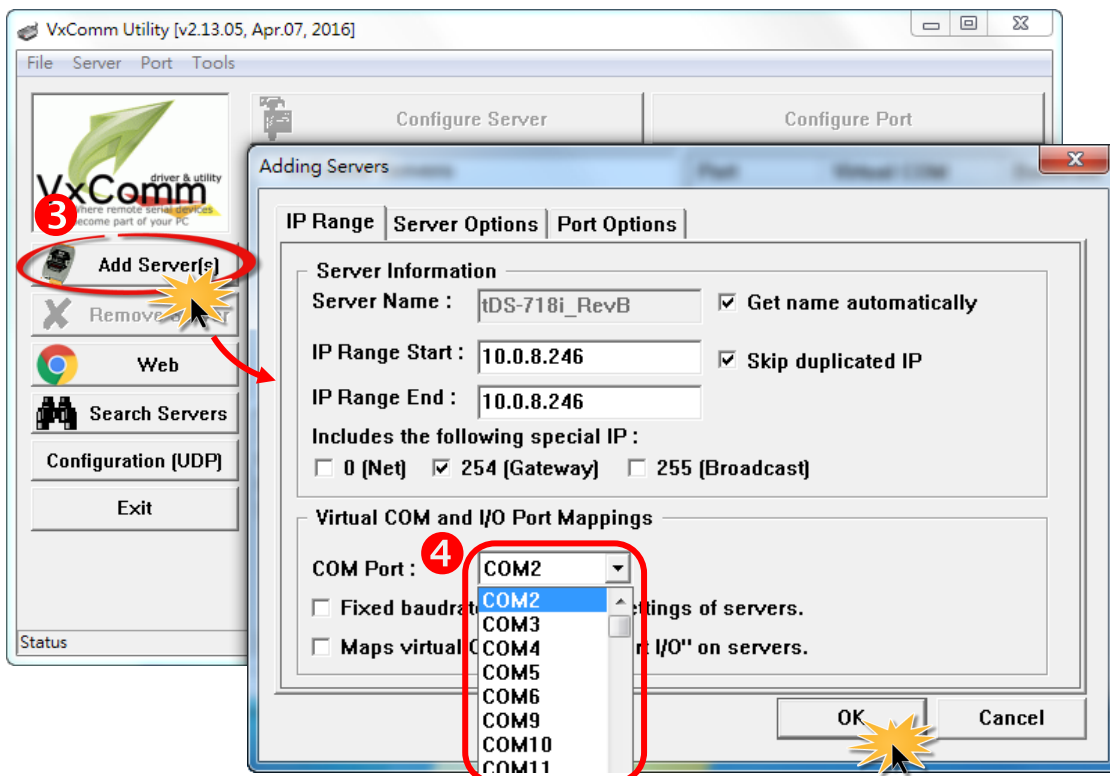
6

Configuring Virtual COM Ports

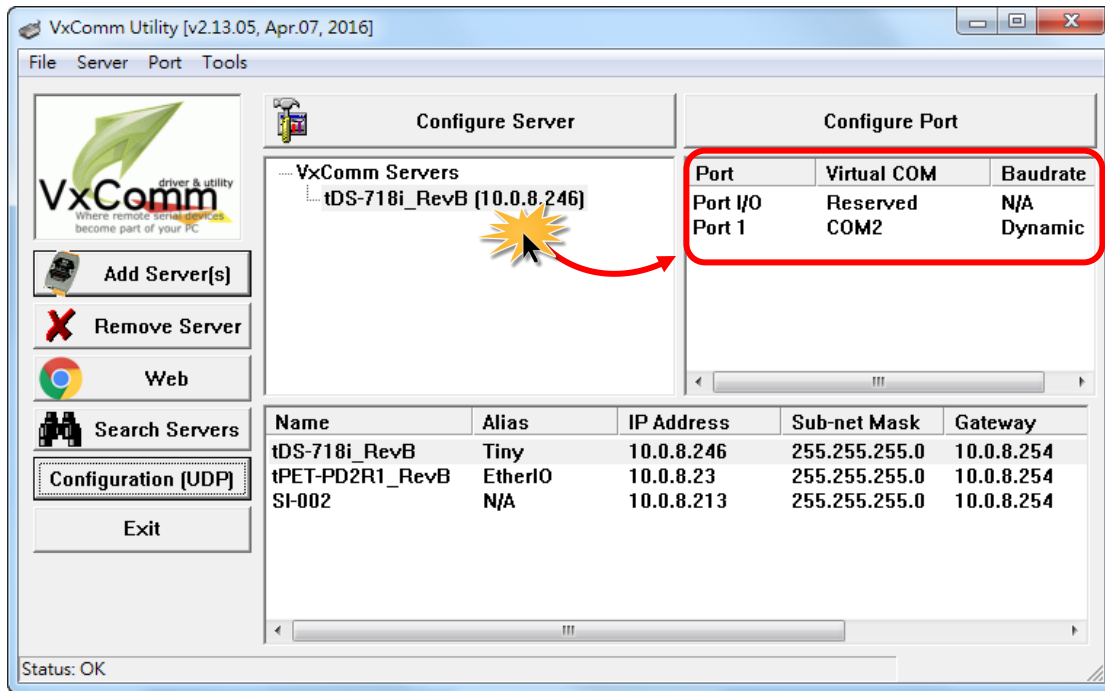
- 1 Wait 2 seconds and then click the "Search Servers" button again to ensure the tDS/tDSM is working well with new configuration.
- 2 Click the name of the tDS/tDSM to select it.



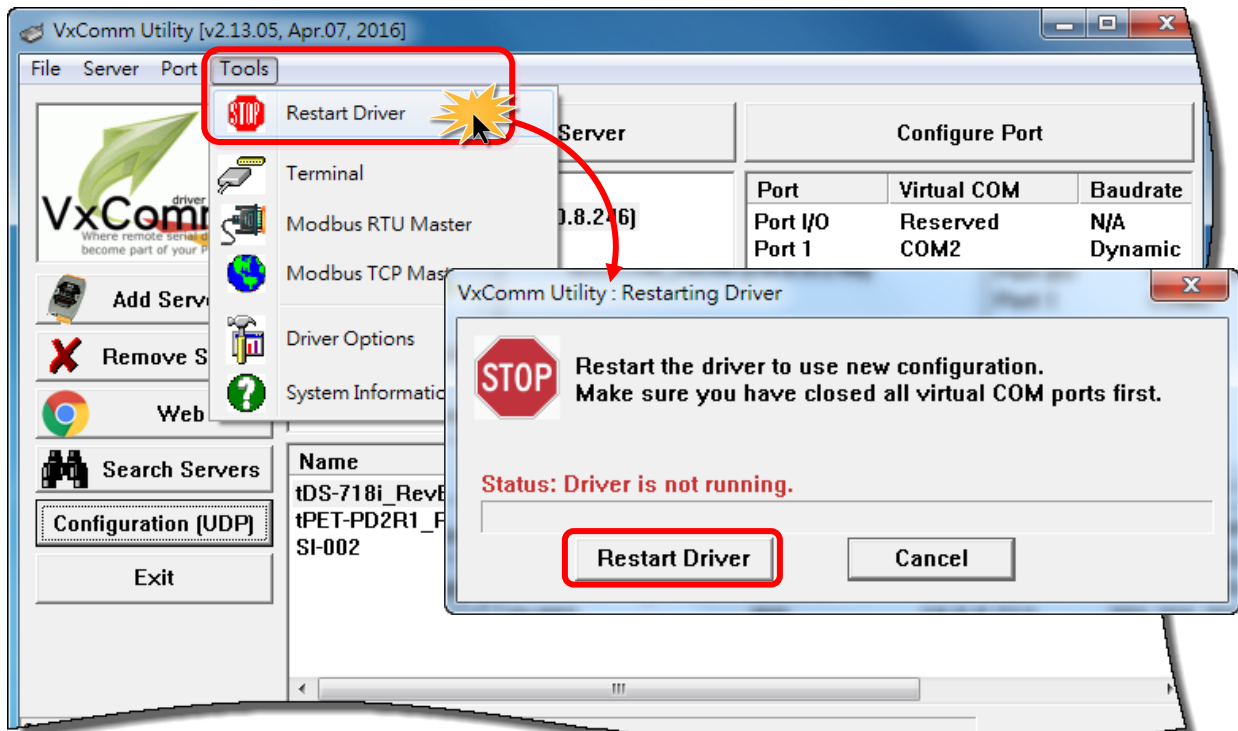
- 3 Click the "Add Server[S]" button.
- 4 Assign a COM Port number and click "OK" to save your settings.



- 5 Click on tDS/tDSM name and check the virtual COM Port mappings on the PC.



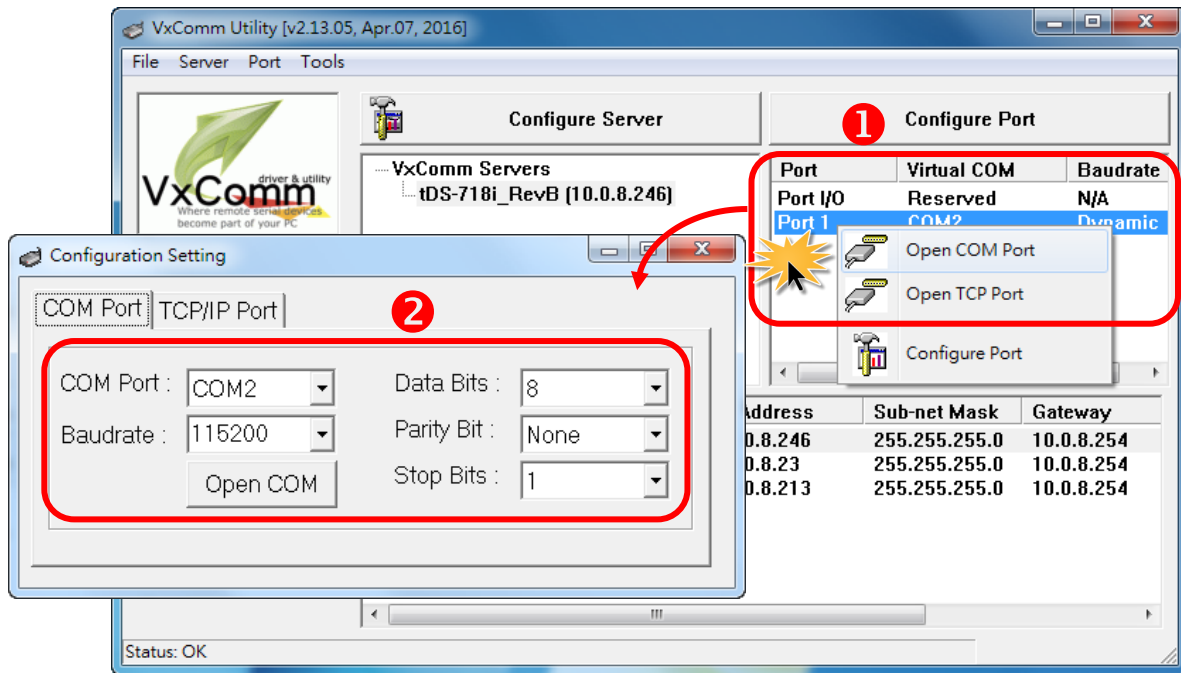
- 6 Click the "Restart Driver" item in the "Tools" menu to display the "VxComm Utility: Restarting Driver" dialog box, and then click the "Restart Driver" button.



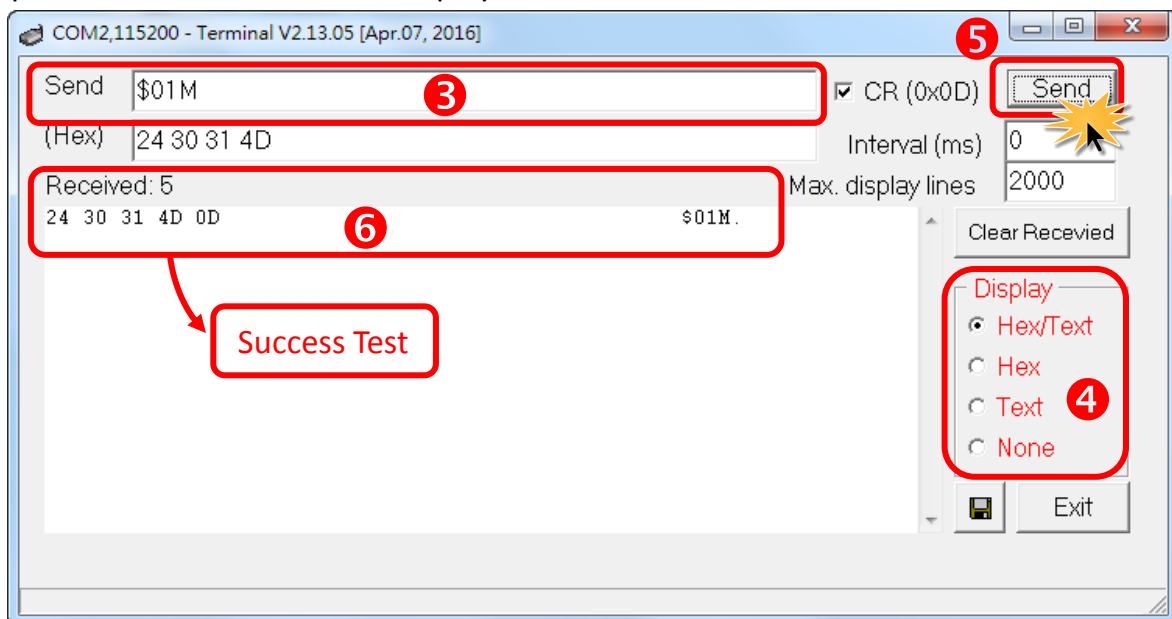
7

Self-Test

- 1 Right click Port1 and then choose the “Open COM Port” item.
- 2 Check that the configuration of the COM Port is correct and then click the “Open COM” button.



- 3 Type a string in the “Send” field.
- 4 Click the “Hex/Text” option in the “Display” section.
- 5 Click the “Send” button to send the message.
- 6 If a response is received, it will be displayed in the received field.





Note that if you intend to use Internet Explorer to open the tDS-700 series web server, ensure that the cache function is disabled in order to prevent browser access errors, please disable your Internet Explorer cache as follow:

Step 1: Click “Tools” >> “Internet Options...” in the menu items.

Step 2: Click the “General” tab and then click the “Settings...” button in Temporary Internet files frame.

Step 3: Click the “Every visit to the page” and then click the “OK” button in Settings box and Internet Options box.

For more detail, please refer to [“FAQ: How to avoid a browser access error that causes a blank page to be displayed when using Internet Explorer”](#)

Related Information

- tDS/tDSM product page:
http://www.icpdas.com/root/product/solutions/industrial_communication/pds/tds-700.html
- Documentation/Firmware:
CD: \Napdos\tDS-700\Document
<http://ftp.icpdas.com/pub/cd/tinymodules/napdos/tds-700/document/>
- Firmware:
CD: \Napdos\tDS-700\Firmware
<http://ftp.icpdas.com/pub/cd/tinymodules/napdos/tds-700/firmware/>
- NS-205 and NS-205PSE product page (optional):
http://www.icpdas.com/root/product/solutions/industrial_ethernet_switch/ns-205.html
http://www.icpdas.com/root/product/solutions/industrial_ethernet_switch/ns-205pse.html