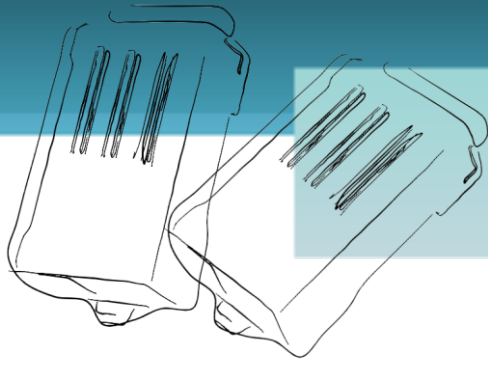


tET/tPET SERIES QUICK START GUIDE



For tET-P2A2/tPET-P2A2

English/ April 2012/ Version 1.0

1 What's in the shipping package?

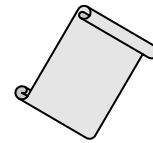
The package includes the following items:



**tET-P2A2 or
tPET-P2A2**



Software CD



Quick Start Guide
(This Document)

2 Preparations for devices

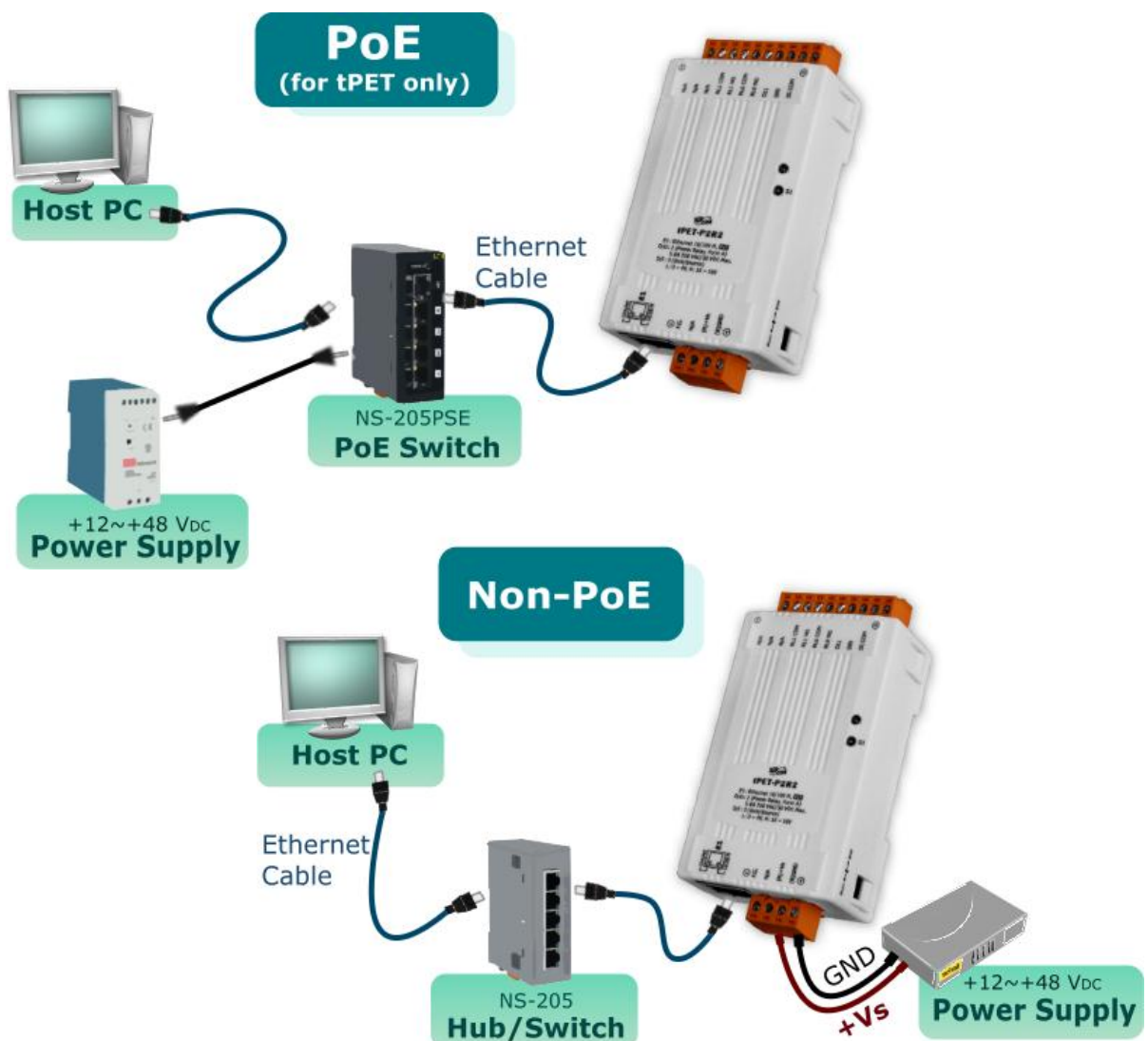
1. Power Supply: **+12 ~ +48 V_{DC}**
2. Ethernet Hub. (PoE Ethernet Switch for tPET module only)
3. Make sure your PC has workable network settings.
4. Disable or well configure your Windows firewall and Anti-Virus firewall first, else the "**Search Servers**" on page 5 may not work. (Please contact with your system Administrator)

3 Connecting the Power and Host PC

1. Check Init/Run switch is on "RUN" position.



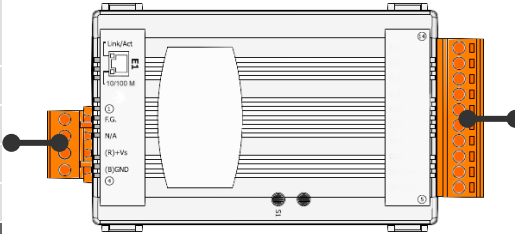
2. Connect both the tET/tPET-P2A2 and your computer to the same sub network or the same Ethernet Switch, and power tET/tPET-P2A2 on.



4 Pin Assignments and Wiring Note

Pin Assignments

Terminal No.	Pin Assignment
E1	Link/Act 10/100 M
01	F.G.
02	N/A
03	(R) +Vs
04	(B) GND



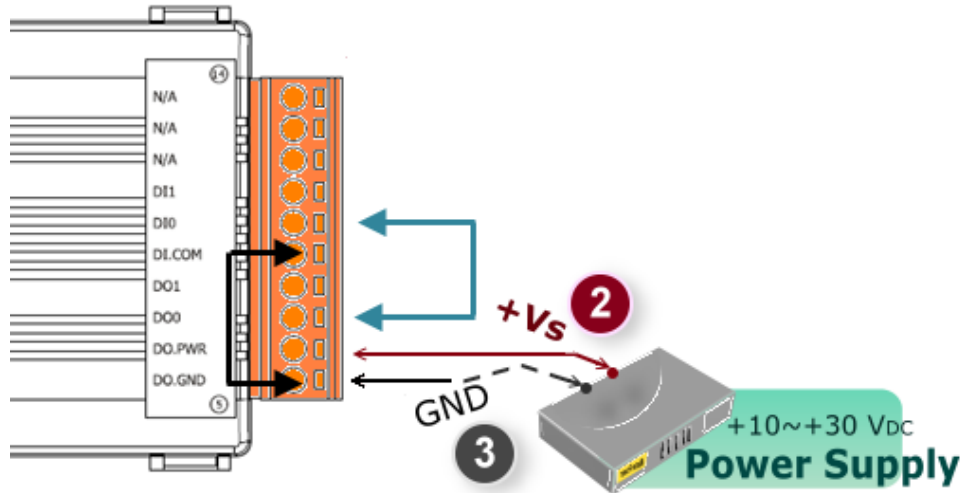
Terminal No.	Pin Assignment
14	N/A
13	N/A
12	N/A
11	DI1
10	DI0
09	DI.COM
08	DO1
07	DO0
06	DO.PWR
05	DO.GND

Digital Input/Output Wiring

Digital Input	Readback as 1	Readback as 0
Sink	+10 ~ +50 V _{DC} 	OPEN or <4 V _{DC}
	+10 ~ +50 V _{DC} 	OPEN or <4 V _{DC}

Digital Output	
ON State Readback as 1	
OFF State Readback as 0	

- Wire the DI and DO for self test. The wiring as follows:
 1. Connect the **DOO** and **DI0**. (Pin07 connect to Pin10)
 2. Connect the **DO.GND** and **DI.COM**. (Pin05 connect to Pin09)
 3. Supply the **External Power +10V** to **DO.PWR**. (External +10V connect to Pin06)
 4. Supply the **External Power GND** to **DO.GND**. (External GND connect to Pin05)



■ DI/DO Modbus Address

(1xxxx) DI address:

Begin address	Points	Description	Bits per Point	Range	Access Type
0 (0x0)	1~2	Digital Input	1	0:Off 1:On	R
32 (0x20)	1~2	Digital latched status (high)	1	0:no 1:latched	R
64 (0x40)	1~2	Digital latched status (low)	1	0:no 1:latched	R

(0xxxx) DO address:

Begin address	Points	Description	Bits per Point	Range	Access Type
0 (0x0)	1~2	Digital Output	1	0: Off 1:On	R/W
32 (0x20)	1	Clear all DI latched status (high)	1	1: Clear	W
33 (0x21)	1	Clear all DI latched status (low)	1	1: Clear	W
.
235 (0xEB)	1~2	Power-on value for DO	1	0=Off 1=On	R/W/F
267 (0x10B)	1~2	safe value for DO	1	0=Off 1=On	R/W/F

i For detail "DI/DO Modbus Address" information, please refer to section **5.3 Modbus Register Map** of user's manual. CD:\NAPDOS\tPET\Document\
<http://ftp.icpdas.com/pub/cd/tinymodules/napdos/tPET/document/>

5

Configuring Ethernet Settings

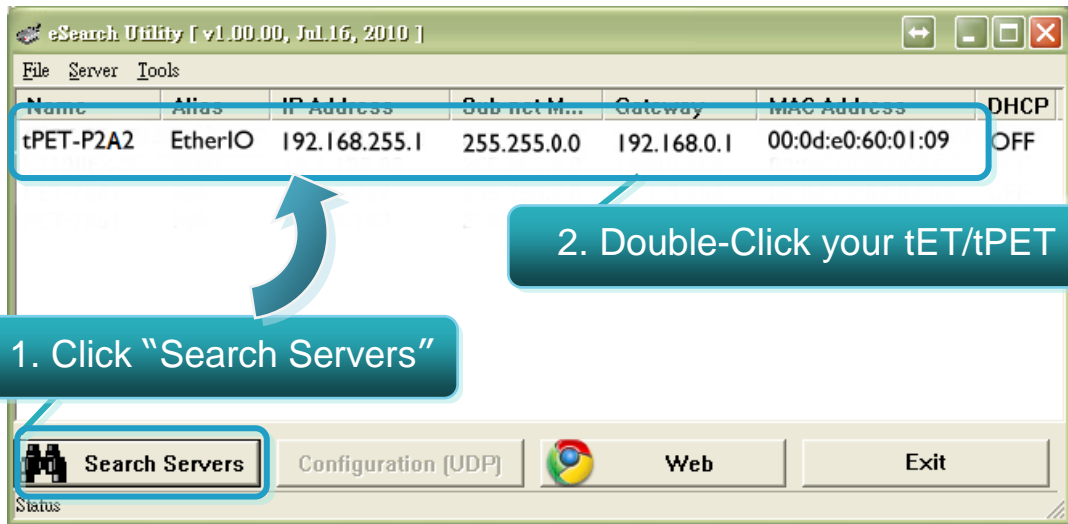
1. Run the eSearch Utility.

The eSearch Utility is located at:
CD:\Napdos\Software\eSearch\

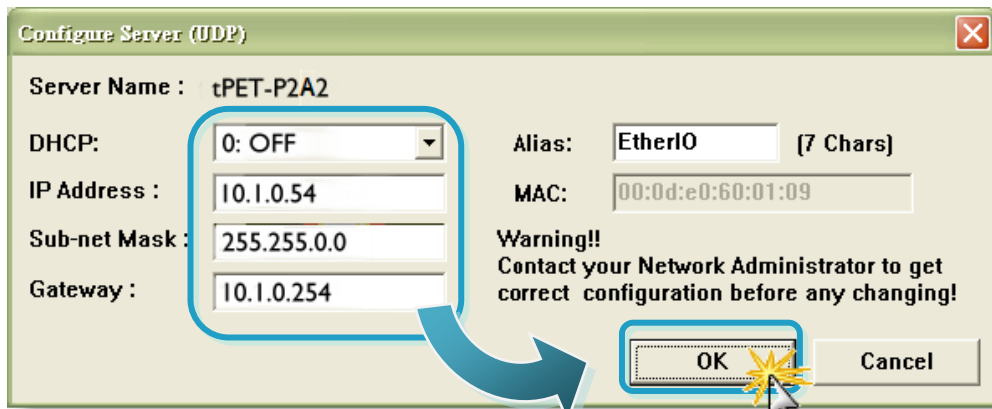
<http://ftp.icpdas.com/pub/cd/tinymodules/napdos/software/esearch/>



2. Click "Search Servers" button to search your tET/tPET-P2A2.
3. Double-Click your tET/tPET-P2A2 to configure the settings.

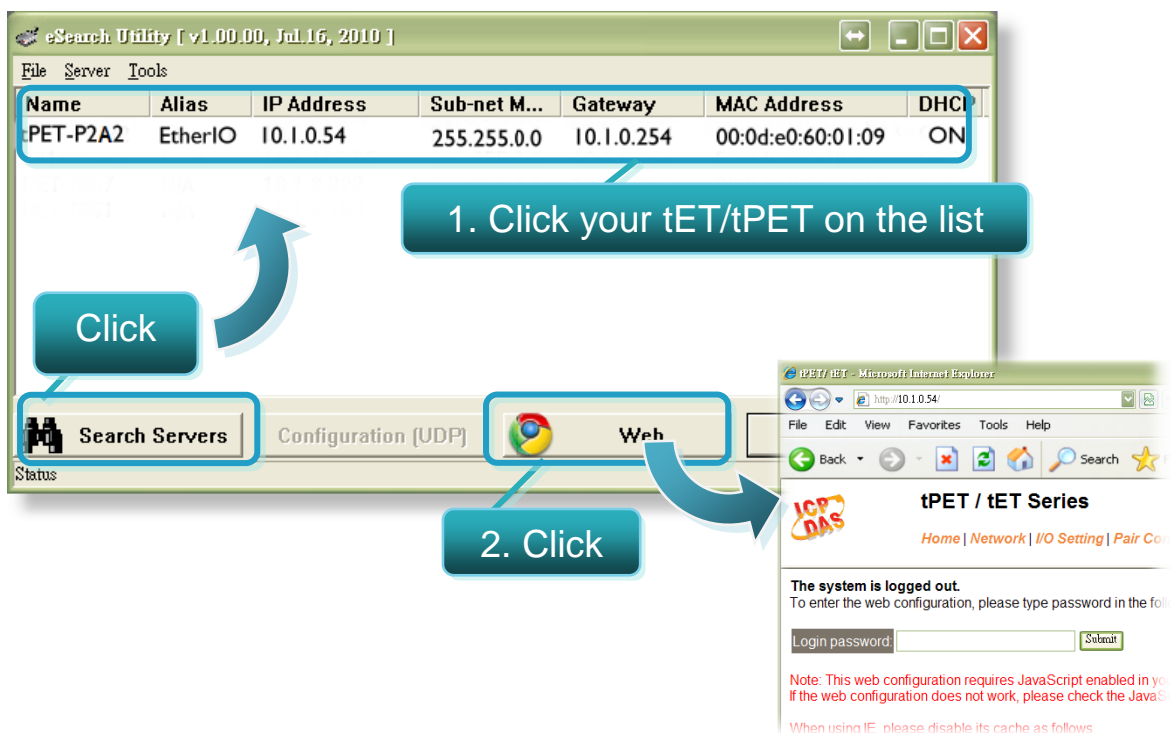


4. Contact your Network Administrator to get correct network configuration. Modify the network settings and then click "OK" button. The tET/tPET-P2A2 will restart it-self immediately.

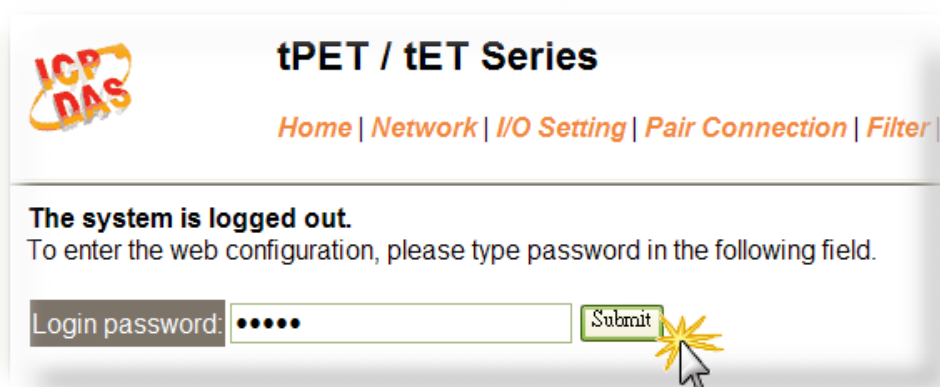


6 Testing your tET/tPET Module

1. Wait 2 seconds and then click the **“Search Servers”** button again to ensure the tET/tPET-P2A2 is working well with new configuration.
2. Click the **“Web”** button to link the tET/tPET-P2A2 web server.



3. Enter the password and click the **“Submit”** button to enter the configuration web page. (The factory default password: **Admin**)



4. Control the I/O for simple test.

- In the **I/O Setting** page, check the **"bit0"** checkbox for setting **ON** to **DO0** and click **"Update Settings"** button.

tPET / tET Series

Home | Network | **I/O Setting** | Pair Connection | Filter | Change Password

Network and Miscellaneous Settings

Model Name:	tPET-P2A2	(Socket)
Firmware Version:	v1.1.5 [Dec.21 2010]	(Network)
IP Address:	10.1.0.54	
Initial Switch:	OFF	

DO control

Set DO value: bit 7~4() bit 3~0()

- In the **Home** page, check that the **DO0** and **DIO** status should show current status are **"ON"**.

tPET / tET Series

1 **Home** | Network | I/O Setting | Pair Connection | Filter | Change Password | Logout

ALL DI:	Value	Digital Counter	High Latched	Low Latched
DI 0:	ON	0	X	X
DI 1:	OFF	0	X	X
DI 2:	-	-	-	-
DI 3:	-	-	-	-
DI 4:	-	-	-	-
DI 5:	-	-	-	-
DI 6:	-	-	-	-
DI 7:	-	-	-	-
DI 8:	-	-	-	-
DI 9:	-	-	-	-
DI 10:	-	-	-	-
DI 11:	-	-	-	-

D07 - D06 - D05 - D04 - D03 - D02 - D01 OFF **D00 ON**



Related Information

- **tET-P2A2/tPET-P2A2 Series Product Page:**

http://www.icpdas.com/products/Remote_IO/PETL7000/tPET-P2A2.htm

- **tET/tPET Series Documentations:**

CD:\Napdos\tPET\document\

<http://ftp.icpdas.com/pub/cd/tinymodules/napdos/tPET/document/>

- **tET/tPET Series Firmware:**

CD:\Napdos\tPET firmware\

<http://ftp.icpdas.com/pub/cd/tinymodules/napdos/tPET/firmware/>

- **NS-205, NS-205PES Product Page (optional):**

<http://www.icpdas.com/products/Switch/industrial/ns-205.htm>

<http://www.icpdas.com/products/Switch/industrial/ns-205pse.htm>

