



# XP-8000 Quick Start Guide

Version 2.3, April 2012

## Congratulations!

Congratulations on purchasing XP-8000 - the most popular automation solution for remote monitoring and control application. This Quick Start Guide will provide information needed to get started with XP-8000. Please also consult the User Manual for detailed information on the setup and use of XP-8000.

## What's in the Box?

In addition to this guide, the package includes the following items:



**XP-8000 Module**

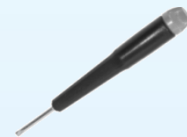
XP-8041  
XP-8341  
XP-8741



**8 GB CF Card**



**Software Utility CD**



**Screw Driver**

1C016  
2.4 mm

XP-8000 Quick Start Guide

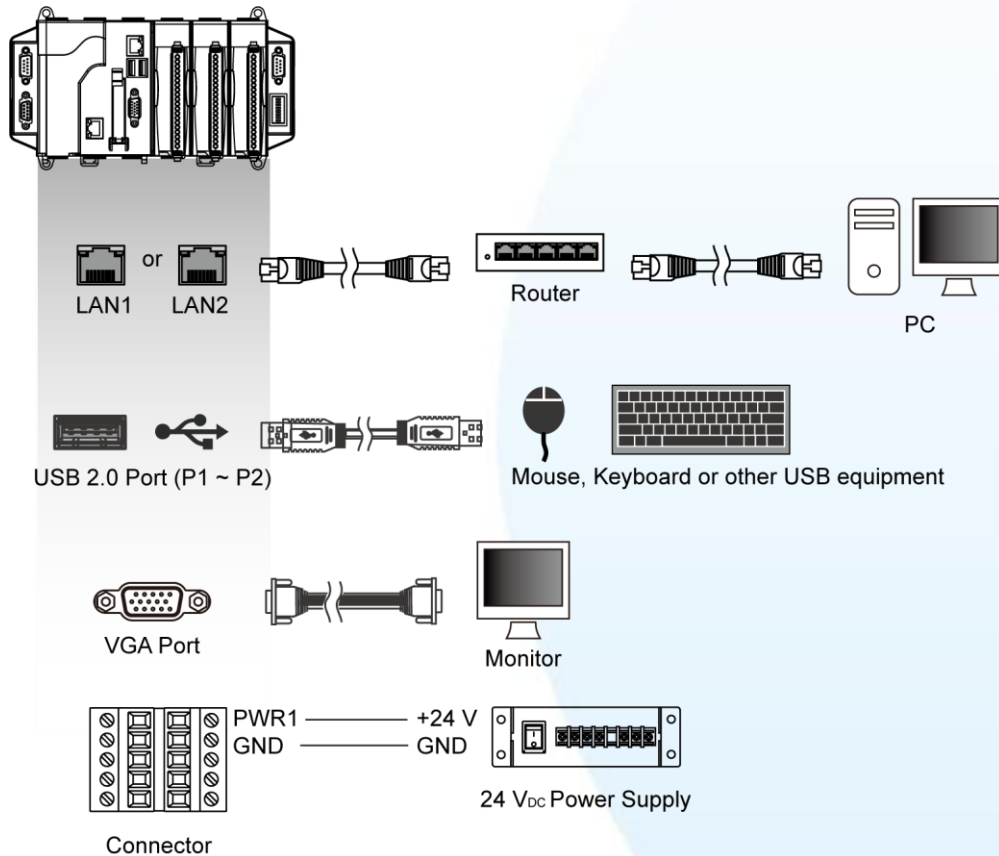
## Preparing for Start-up Your XP-8000

- **Power Supply: +10 ~ +30 VDC (Ex: DP-665)**  
[http://www.icpdas.com/products/Accessories/power\\_supply/power\\_list.htm](http://www.icpdas.com/products/Accessories/power_supply/power_list.htm)
- **Monitor: 800 x 600 ~ 1600 x 1200**
- **USB Mouse**
- **USB Keyboard**

# 1

## Connecting to PC and Other Supported Devices

- i. Connect PC to the LAN port through a hub.
- ii. Connect the USB mouse and USB keyboard to the USB port.
- iii. Connect the monitor to the VGA port.
- iv. Connect the +24 V<sub>DC</sub> power supply to PWR1 and GND terminals.

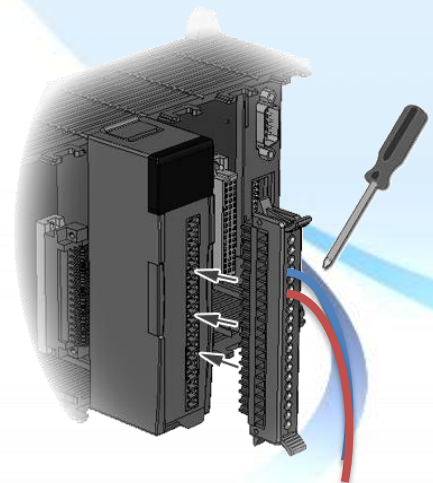


# 2

## Inserting the I/O Modules

Only high profile I-8K and I-87K series modules can be plugged.

For more information about this expansion I/O modules, please refer to [http://www.icpdas.com/products/PAC/xpac/IO\\_Expansion.htm](http://www.icpdas.com/products/PAC/xpac/IO_Expansion.htm)



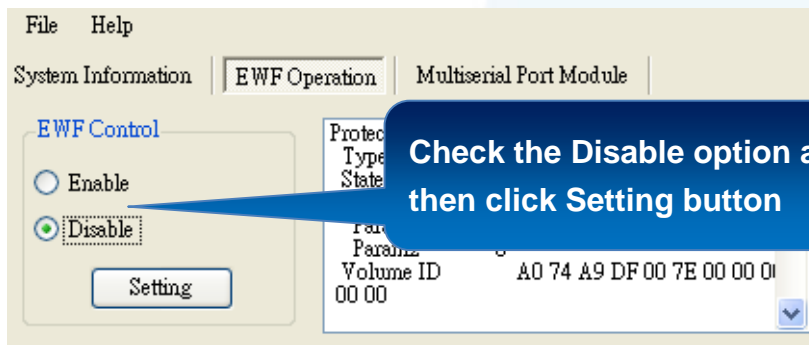
# 3

## Enabling/Disabling the EWF for Disc Protection

The EWF protects the C disk on XP-8000 for protecting the system from virus infection and harsh environments, if you want to install the application or modify the system settings, you must first disable it. After the operation has been completed, EWF needs to be enabled.

### Step 1 Disable EWF:

- i. Double-Click XPAC Utility located on desktop
- ii. Click EWF operation tab, Check Disable option and click Setting button

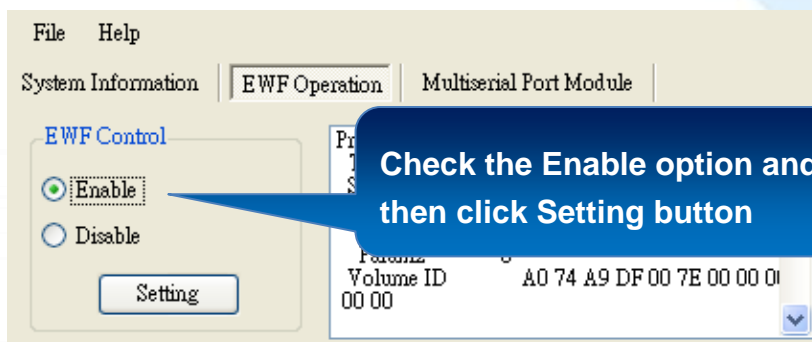


- iii. Click OK button on pop-up message box, then reboot the XP-8000

### Step 2 Install the application or modify the system settings

### Step 3 Enable EWF:

- i. Double-Click XPAC Utility located on desktop
- ii. Click EWF operation tab, Check Enable option and click Setting button

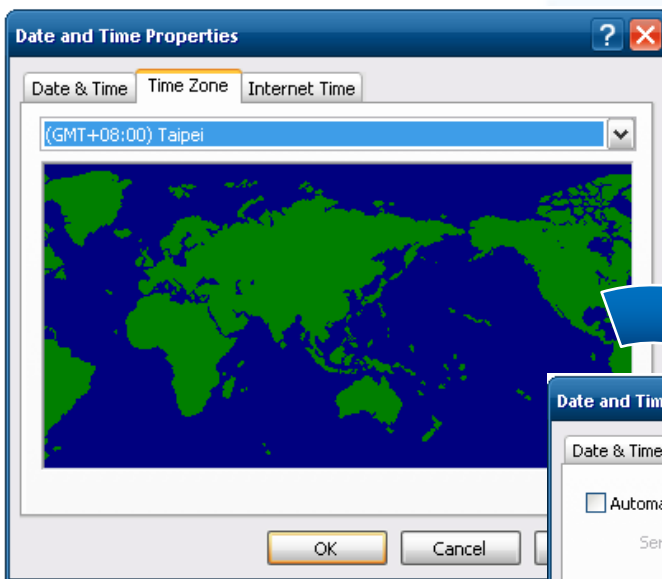


- iii. Click OK button on pop-up message box, then reboot the XP-8000

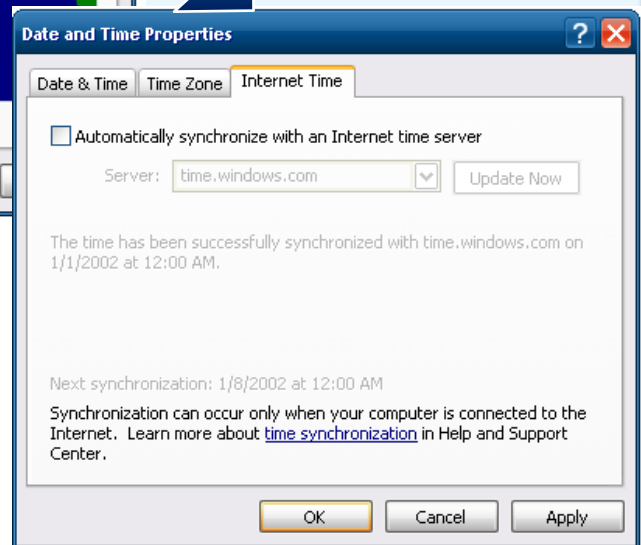
# 4 Changing System Settings

When you turn on the XP-8000 and learned how to enable and disable the EWF, next you need to configure two system settings for your XP-8000 target – language and time zone. Before you begin the configuration, make sure that you have disabled the EWF.

**Step 1** Click “Start” menu, point to “Settings”, click “Control Panel”, and then click “Date and Time”



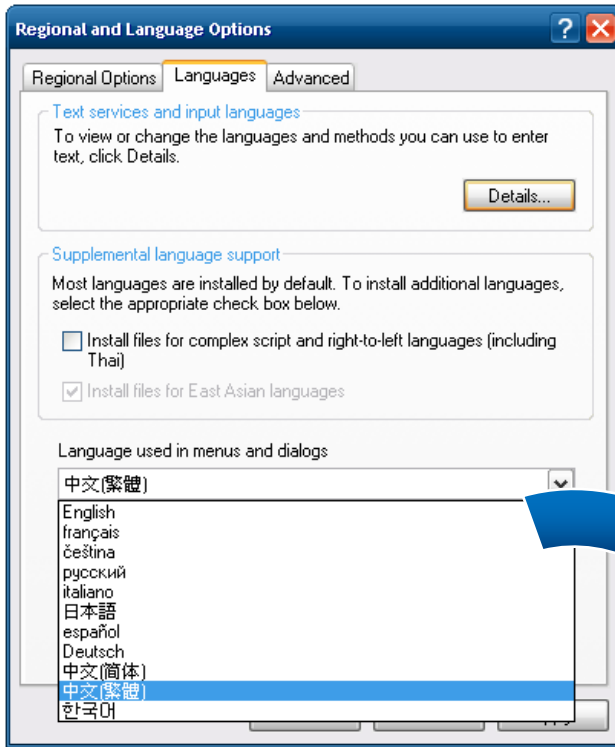
**Step 2** Click “Time Zone” tab, choose your local time zone, and then click “Apply” button



**Step 3** Click “Internet Time” tab, click to clear the “Automatically synchronize with an Internet time server” check box, and then click “OK” button

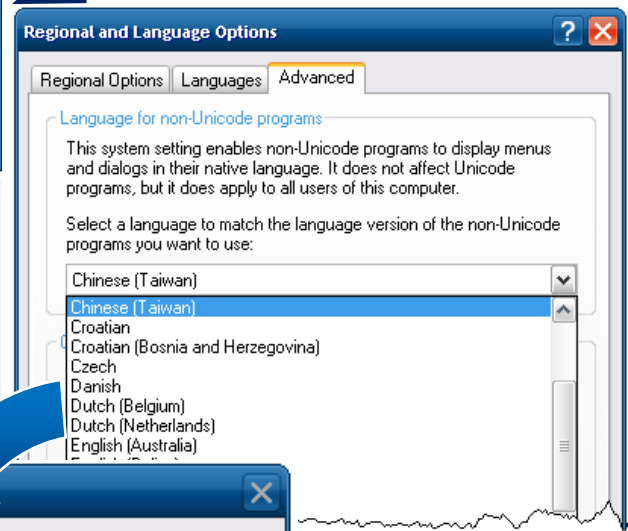
**Step 4** Go back to the control panel, and then click “Date and Time”



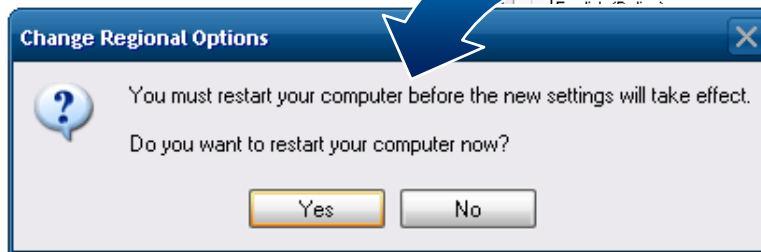


**Step 5 Click “Language” tab, choose your local language from drop-down menu, and then click “Apply” button**

**Step 6 Click “Advanced” tab, choose your language for non-unicode programs from drop-down menu, and then click “OK” button**



**Step 7 Click “Yes” button on pop-up message box for restarting the XP-8000 to take effect**



## 5 Using DCON Utility to Configure I-87K Modules

DCON Utility is a tool kit that can be used to quickly control and manage I-87K series expansion I/O modules.

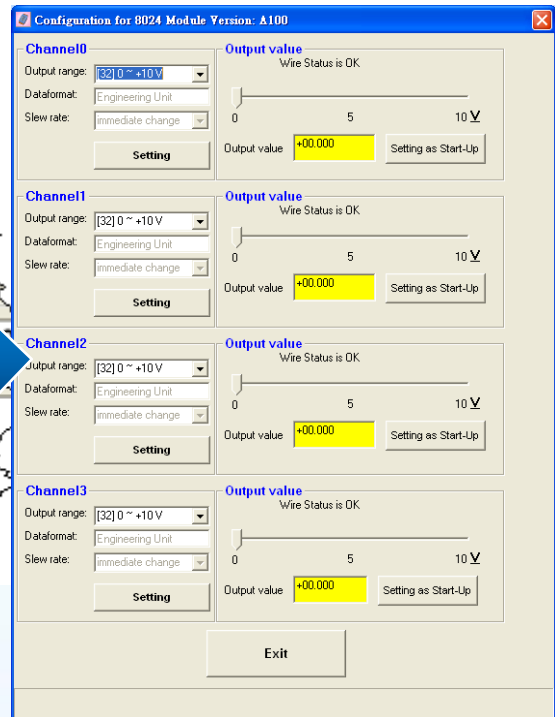
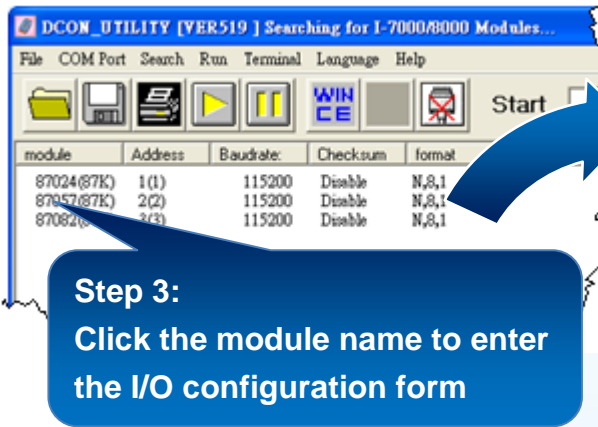
**Step 1 Double-click “DCON Utility” located on desktop**



**Step 2 Click “Search” button**



**Step 3 Click the module name to enter the I/O configuration form**



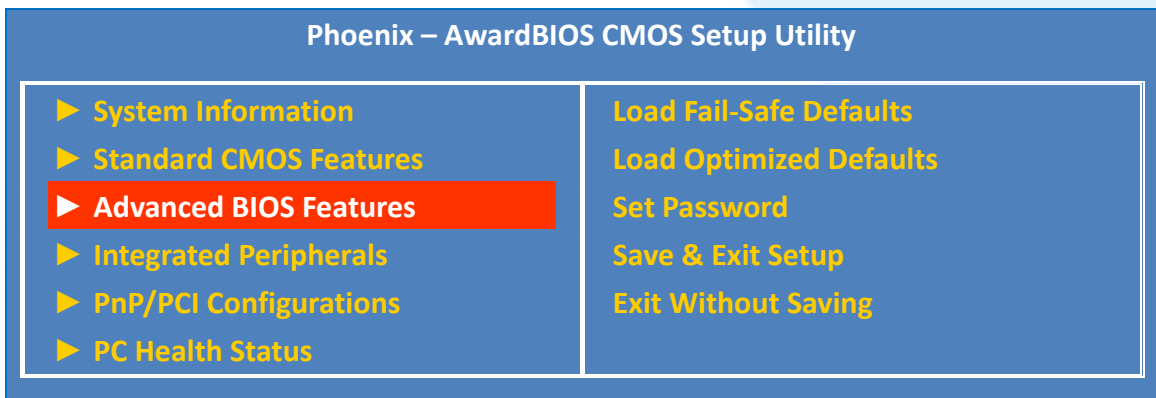
## 6 Recovering your XP-8000

Before recovering the OS, please make sure your data is well backed up.

**Step 1 Plug the “Rescue” marked CF card in CF slot**

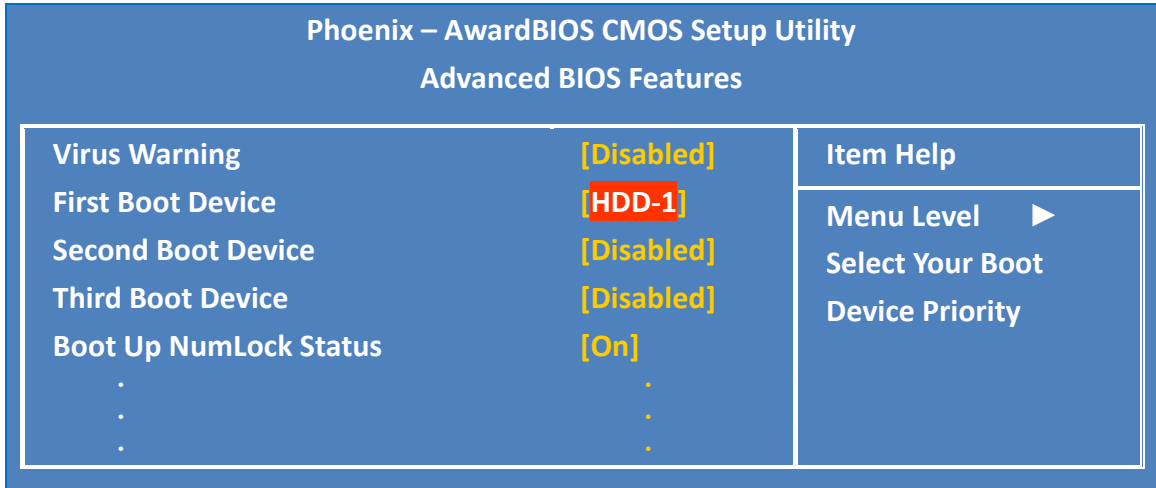
**Step 2 Reboot the XP-8000 and go to the BIOS by pressing “Delete” key**

**Step 3 Select “Advanced BIOS Features”, and then press “Enter” key**



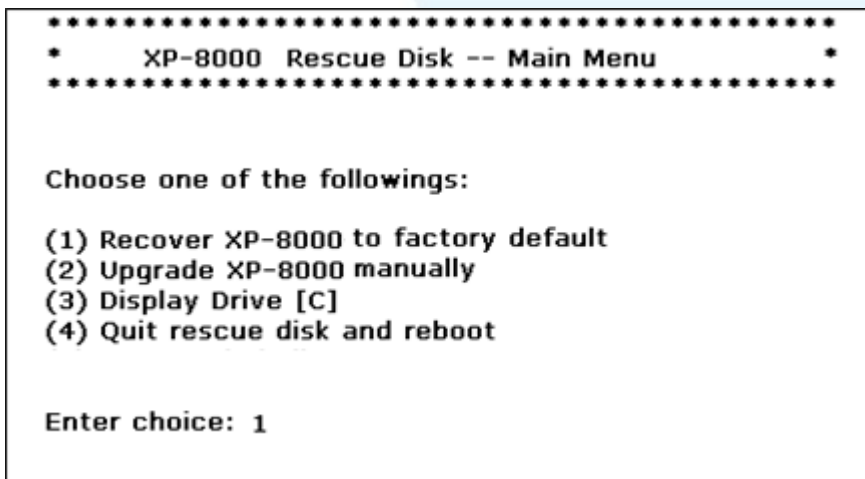
**Step 4 Select “First Boot Device” and press “Enter” key**

**Step 5 Set “First Boot Device” as “HDD-1”, it specifies the XP-8000 to boot form CF card**



**Step 6 Press “F10” to save and select “OK” to exit setup utility**

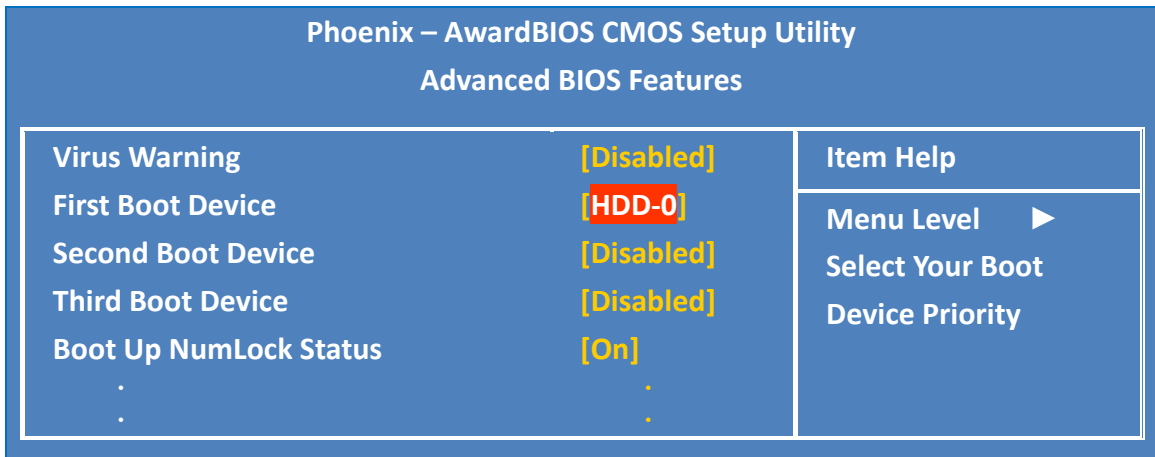
**Step 7 After restarting, the system will enter the XP-8000 Rescue Utility, and then enter (1) Recover XP-8000 to factory default**



**Step 8 After taking about 20 minutes to recover the XP-8000, we enter the XP-8000 Rescue Utility again, and then enter (4) Quit rescue disk and reboot**



## Step 9 Repeat step 2 ~ 6 to set “First Boot Device” as “HDD-0”



## Step 10 After rebooting the XP-8000, the system takes about 8 minutes to set up, and then it has been recovered

## Technical Support

After you have finished configuring your module(s), you may start to develop your own applications. For detailed instructions and more applications, please refer to the following information list:

- **XP-8000 User Manual**

CD:\Document\user\_manual\

[ftp://ftp.icpdas.com/pub/cd/xp-8000/document/user\\_manual/](ftp://ftp.icpdas.com/pub/cd/xp-8000/document/user_manual/)

- **XPacSDK API**

CD:\SDK\

<ftp://ftp.icpdas.com/pub/cd/xpac-8000/sdk/>

- **XPacSDK API Documents**

CD:\Document\sdk\xpacsdk\

<ftp://ftp.icpdas.com/pub/cd/xpac-8000/document/sdk/>

- **DCON Utility User Manual**

CD:\Tools\DCON\_UTILITY\Manual\

[ftp://ftp.icpdas.com/pub/cd/xpac-8000/tools/dcon\\_utility/manual/](ftp://ftp.icpdas.com/pub/cd/xpac-8000/tools/dcon_utility/manual/)

- **XP-8000 Website**

[http://www.icpdas.com.tw/product/solutions/pac/xpac/xp\\_8x41.html](http://www.icpdas.com.tw/product/solutions/pac/xpac/xp_8x41.html)