



# **μPAC-7186EX-MTCP series**

## **Quick Start Manual**

*Wrote by Mac Cho*

*Version 1.00*

*Date 2007/11/08*

### **Package Checklist**

The package includes the following items:

- One μPAC-7186E hardware module
- One Quick Start Manual (this manual)
- One companion CD
- One RS-232 download cable (CA-0910)
- One 2.4 mm screw driver

### **Related Documents, Firmware and Software Utilities**

#### **Documents**

- CD:\NAPDOS\Modbus\7186EX\Document\
- <http://ftp.icpdas.com/pub/cd/8000cd/napdos/modbus/7186ex/document/>

#### **Firmware**

- CD:\NAPDOS\Modbus\7186EX\Firmware\
- <http://ftp.icpdas.com/pub/cd/8000cd/napdos/modbus/7186ex/firmware/>

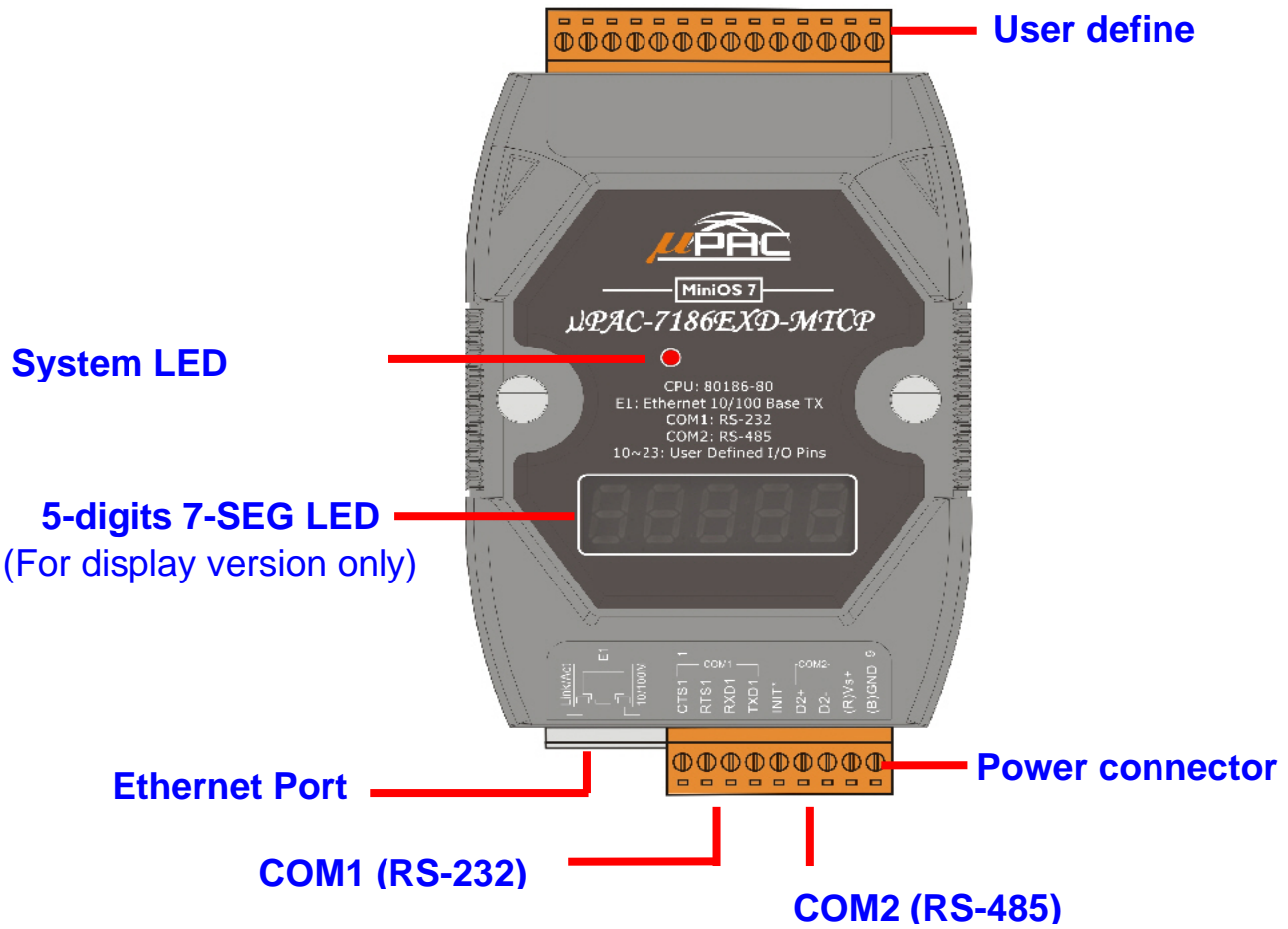
#### **MiniOS7 Utility**

- CD:\NAPDOS\Minios7\utility\Minios7\_Utility\
- [http://ftp.icpdas.com/pub/cd/8000cd/napdos/minios7/utility/minios7\\_utility/](http://ftp.icpdas.com/pub/cd/8000cd/napdos/minios7/utility/minios7_utility/)

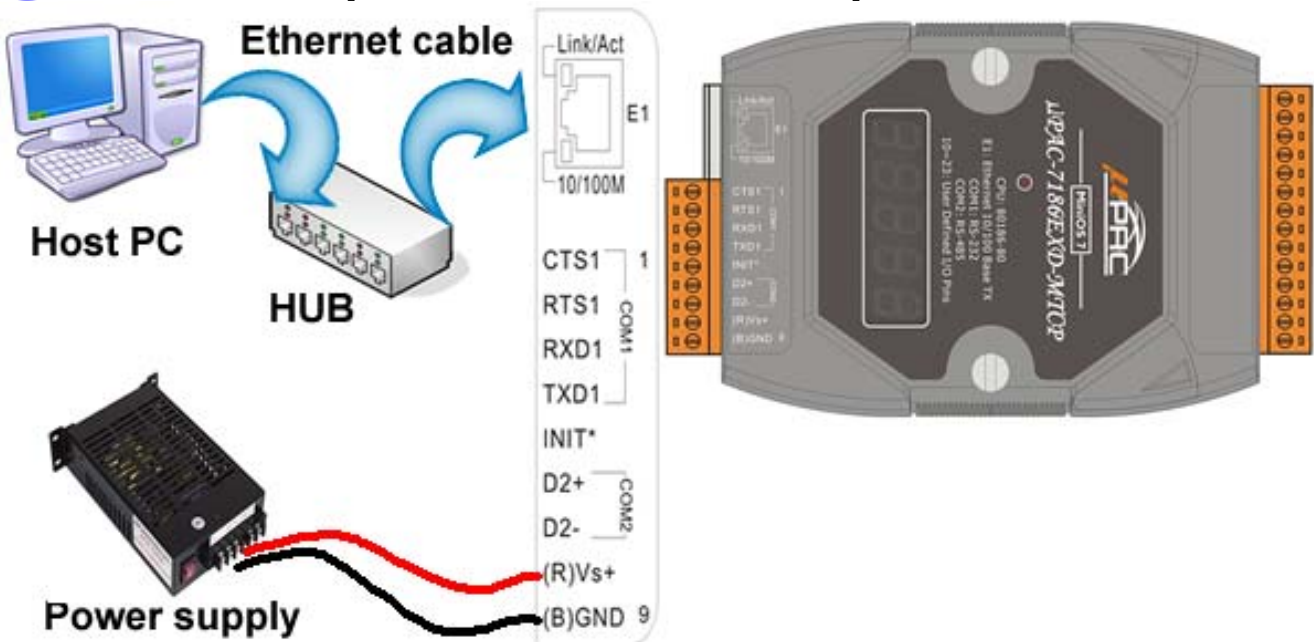
#### **Modbus Utility**

- CD:\NAPDOS\Modbus\Modbus\_Utility\
- [http://ftp.icpdas.com/pub/cd/8000cd/napdos/modbus/modbus\\_utility/](http://ftp.icpdas.com/pub/cd/8000cd/napdos/modbus/modbus_utility/)

## ➡ View of the $\mu$ PAC-7186EX-MTCP



## ➡ Connect the $\mu$ PAC-7186E-MTCP to power and Host PC

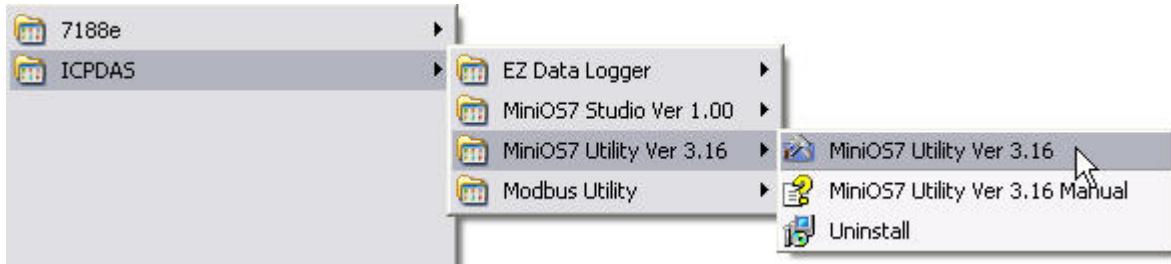


## ➡ Install MiniOS7 Utility

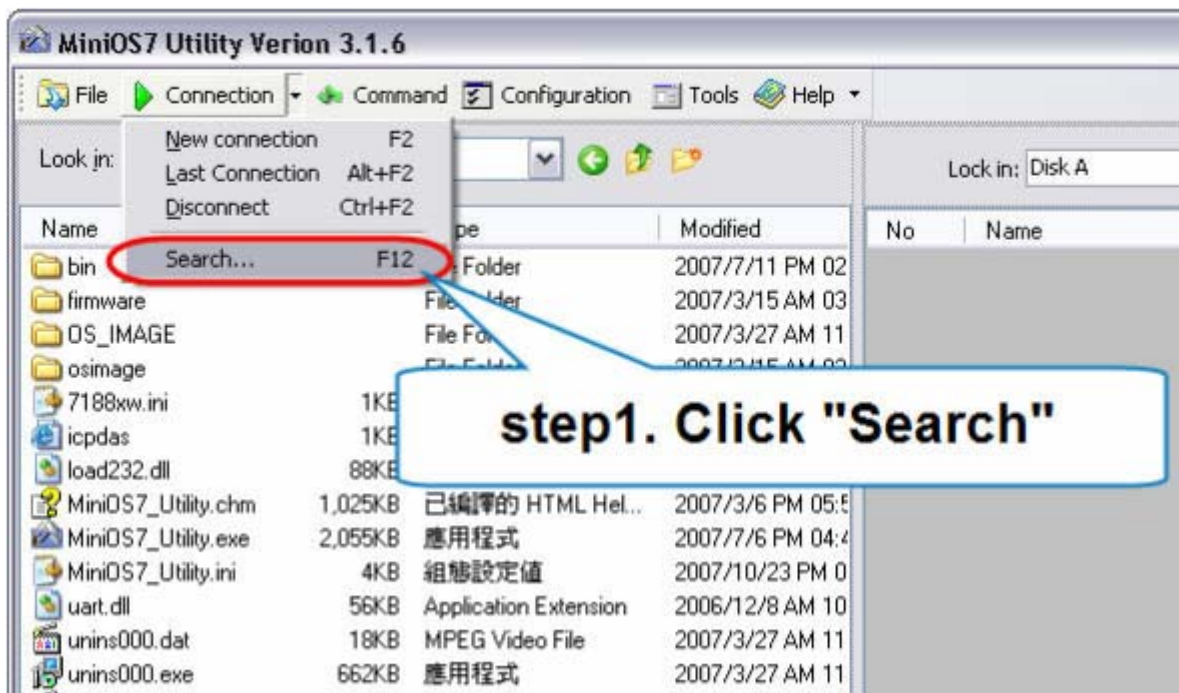
The installation software can be obtained from:

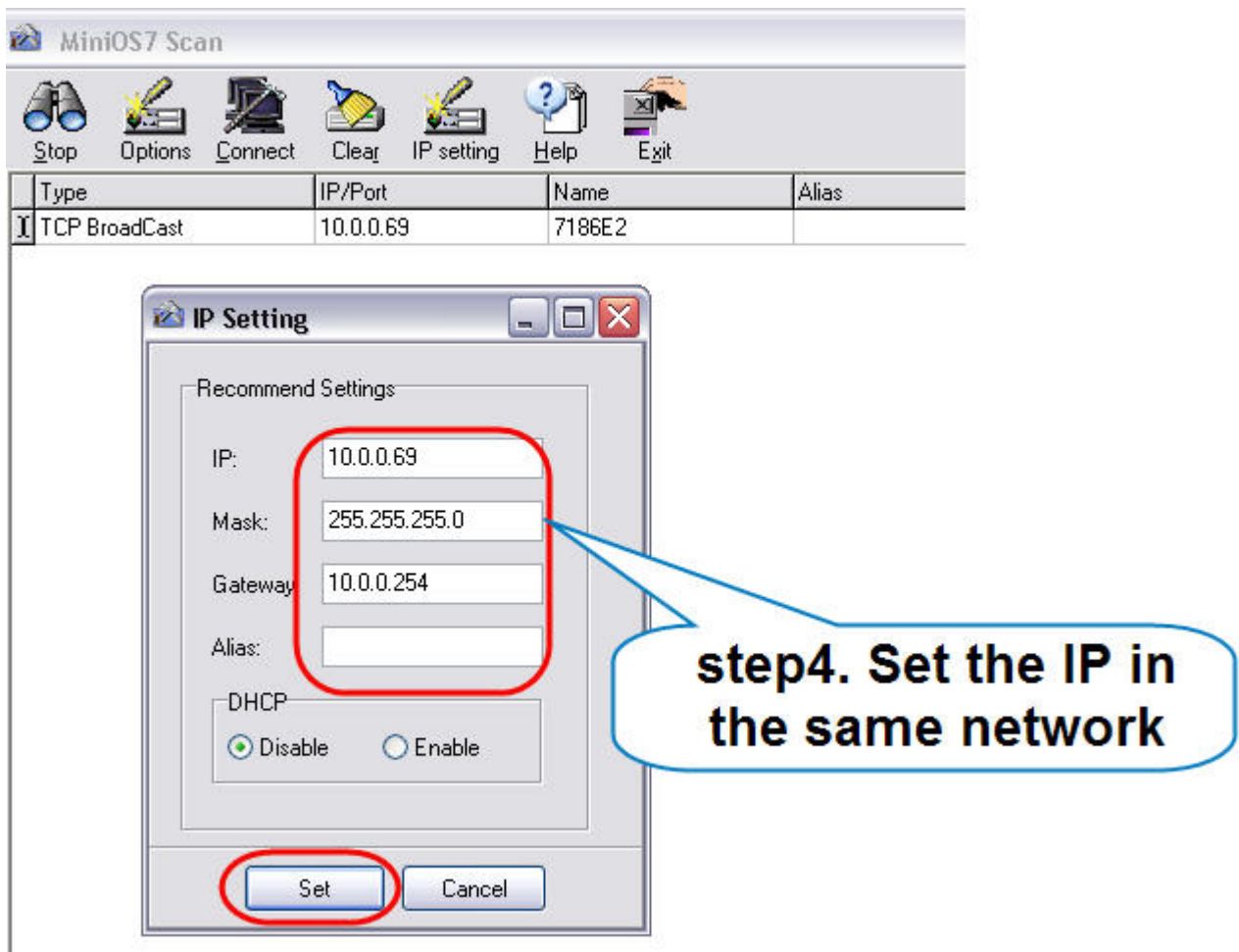
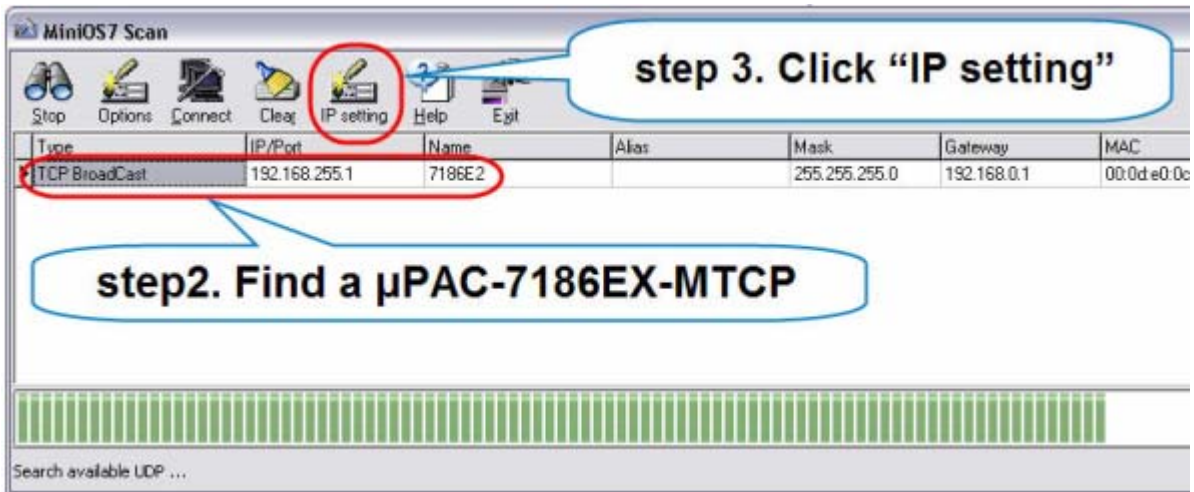
- CD:\8000\Napdos\minios7\utility\minios7\_utility\
- [http://ftp.icpdas.com/pub/cd/8000cd/napdos/minios7/utility/minios7\\_utility/](http://ftp.icpdas.com/pub/cd/8000cd/napdos/minios7/utility/minios7_utility/)

## ➡ Launch MiniOS7 Utility



## ➡ Set IP Address



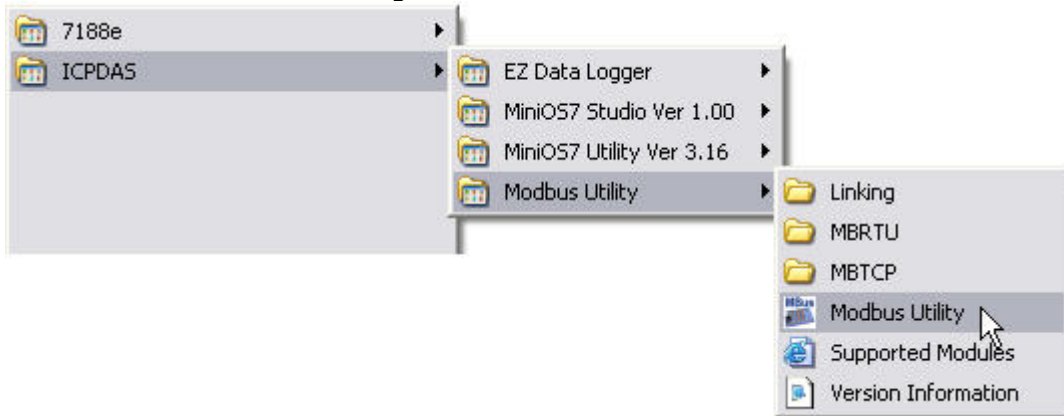


## ➔ Install Modbus Utility

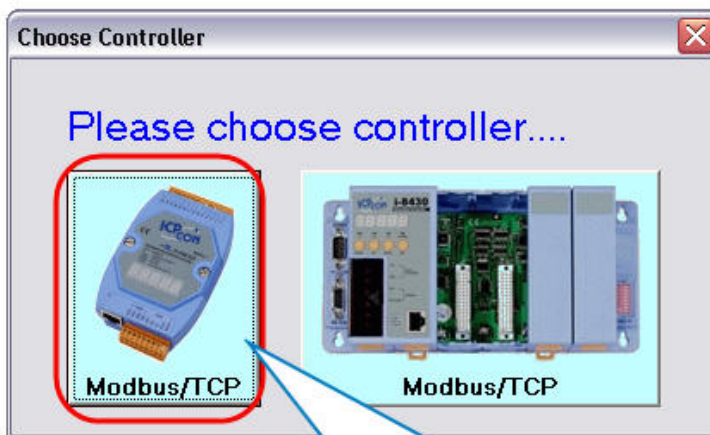
The installation software can be obtained from the following location.

- CD:\8000\Napedos\Modbus\Modbus\_UTILITY\
- [http://ftp.icpdas.com/pub/cd/8000cd/napedos/modbus/modbus\\_utility/](http://ftp.icpdas.com/pub/cd/8000cd/napedos/modbus/modbus_utility/)

## ➔ Launch Modbus Utility



## ➔ Configure the settings of $\mu$ PAC-7186EX-MTCP



step1. Run the Modbus Utility and then click the left button

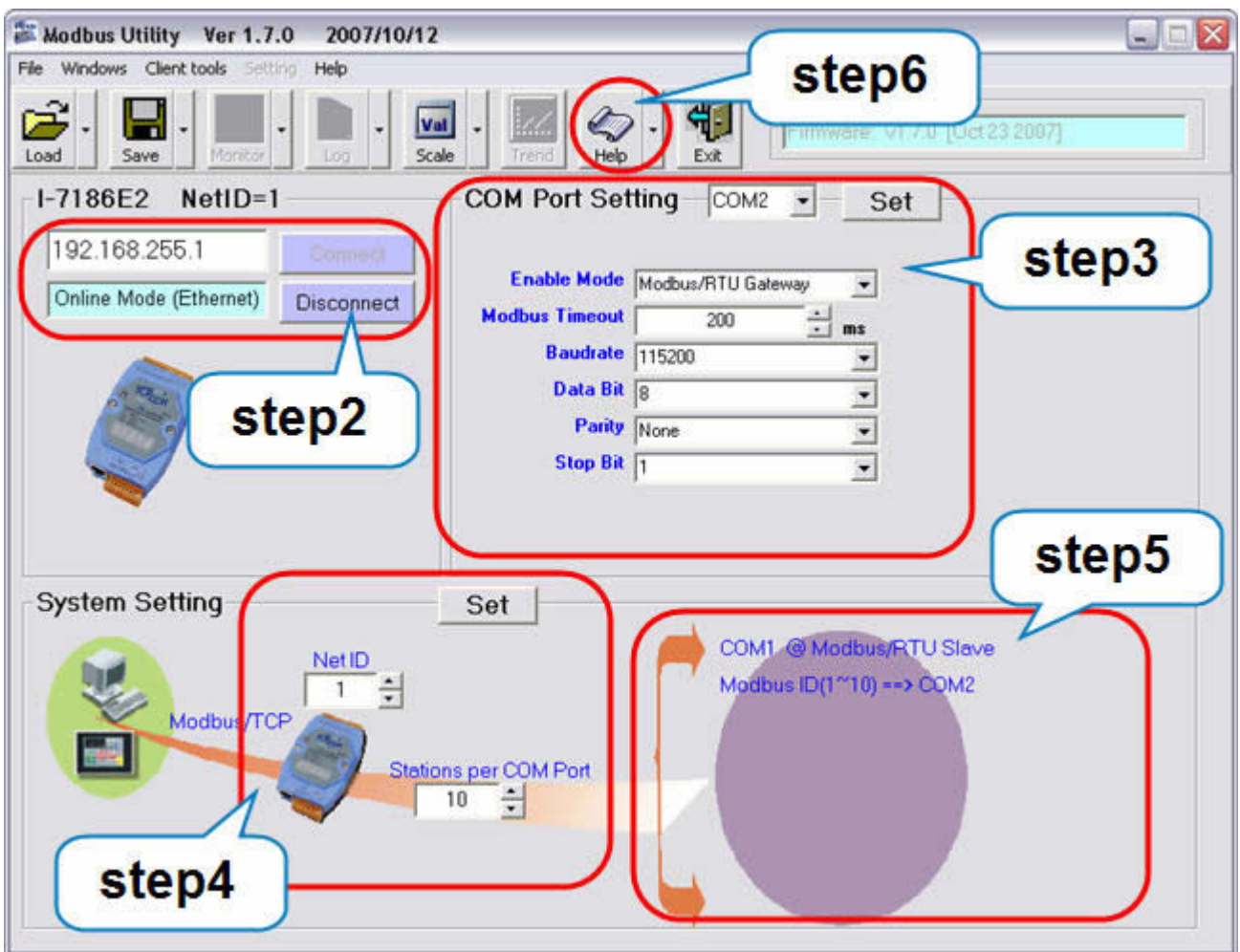
**Step2.** Key in the IP address and connect

**Step3.** Set COM Port mode and condition in “COM Port setting” area

**Step4.** Set NetID and Stations per COM Port in “System Setting”

**Step5.** The COM Port states shows on the right side at “System Setting”

**Step6.** For more information, please refer to the Help file



## FAQ

### 1. How do I test the communication of $\mu$ PAC-7186EX-MTCP?

Ans: You can use the client tools (Modbus/TCP client and Modbus/RTU client) in Modbus Utility.

### 2. I need more COM Port, how can I do?

Ans: You can refer to the Xboard Selection Guide to add one board to the  $\mu$  PAC-7186EX-MTCP.

[http://www.icpdas.com/products/PAC/i-o\\_expansion/x\\_list.htm](http://www.icpdas.com/products/PAC/i-o_expansion/x_list.htm)

## Technical Support

1. ICP DAS Service : [service@icpdas.com](mailto:service@icpdas.com)

2.  $\mu$  PAC-7186EX-MTCP software Website:

[http://www.icpdas.com/products/PAC/i-8000/modbus\\_web\\_download.htm](http://www.icpdas.com/products/PAC/i-8000/modbus_web_download.htm)